

Datasheet for ABIN2780338
anti-SOX9 antibody (C-Term)[Go to Product page](#)

5 Images

1 Publication

Overview

Quantity:	100 µL
Target:	SOX9
Binding Specificity:	C-Term
Reactivity:	Human, Mouse, Rat, Rabbit, Dog, Pig, Zebrafish (Danio rerio), Cow, Guinea Pig, Horse
Host:	Rabbit
Clonality:	Polyclonal
Conjugate:	This SOX9 antibody is un-conjugated
Application:	Western Blotting (WB), Flow Cytometry (FACS)

Product Details

Immunogen:	The immunogen is a synthetic peptide directed towards the C terminal region of human SOX9
Sequence:	AGQGTGLYST FTYMNPQR MYTPIADTSG VPSIPQTHSP QHWEQPVYTQ
Predicted Reactivity:	Cow: 86%, Dog: 100%, Guinea Pig: 86%, Horse: 100%, Human: 100%, Mouse: 100%, Pig: 100%, Rabbit: 100%, Rat: 100%, Zebrafish: 86%
Characteristics:	This is a rabbit polyclonal antibody against SOX9. It was validated on Western Blot using a cell lysate as a positive control.
Purification:	Affinity Purified

Target Details

Target:	SOX9
---------	------

Target Details

Alternative Name:	SOX9 (SOX9 Products)
Background:	<p>SOX9 recognizes the sequence CCTTGAG along with other members of the HMG-box class DNA-binding proteins. It acts during chondrocyte differentiation and, with steroidogenic factor 1, regulates transcription of the anti-Muellerian hormone (AMH) gene. Deficiencies lead to the skeletal malformation syndrome campomelic dysplasia, frequently with sex reversal. The protein encoded by this gene recognizes the sequence CCTTGAG along with other members of the HMG-box class DNA-binding proteins. It acts during chondrocyte differentiation and, with steroidogenic factor 1, regulates transcription of the anti-Muellerian hormone (AMH) gene. Deficiencies lead to the skeletal malformation syndrome campomelic dysplasia, frequently with sex reversal. Publication Note: This RefSeq record includes a subset of the publications that are available for this gene. Please see the Entrez Gene record to access additional publications.</p> <p>Alias Symbols: CMD1, CMPD1, SRA1</p> <p>Protein Interaction Partner: ZBTB7A, SCX, HERC1, UBC, SOX9, ATP6V1H, ctnnb1-a, RUNX2, SMAD3, SMAD2, EP300, CREB3L4, SPEN, KPNB1, TRAF2, CREBBP, MED12, NR5A1, MAF, HSPA1A, CREB1,</p> <p>Protein Size: 509</p>
Molecular Weight:	56 kDa
Gene ID:	6662
NCBI Accession:	NM_000346 , NP_000337
UniProt:	P48436
Pathways:	EGFR Signaling Pathway , Stem Cell Maintenance , Regulation of Muscle Cell Differentiation , Tube Formation , Skeletal Muscle Fiber Development

Application Details

Application Notes:	Optimal working dilutions should be determined experimentally by the investigator.
Comment:	Antigen size: 509 AA
Restrictions:	For Research Use only

Handling

Format:	Liquid
Concentration:	Lot specific

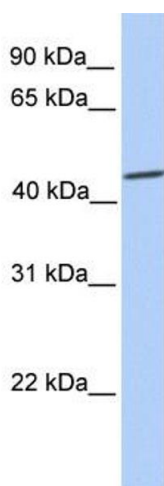
Handling

Buffer:	Liquid. Purified antibody supplied in 1x PBS buffer with 0.09 % (w/v) sodium azide and 2 % sucrose.
Preservative:	Sodium azide
Precaution of Use:	This product contains Sodium azide: a POISONOUS AND HAZARDOUS SUBSTANCE which should be handled by trained staff only.
Handling Advice:	Avoid repeated freeze-thaw cycles.
Storage:	-20 °C
Storage Comment:	For short term use, store at 2-8°C up to 1 week. For long term storage, store at -20°C in small aliquots to prevent freeze-thaw cycles.

Publications

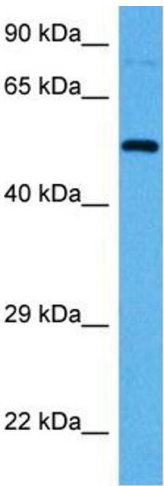
Product cited in:	Surjit, Oberoi, Kumar, Lal: "Enhanced alpha1 microglobulin secretion from Hepatitis E virus ORF3-expressing human hepatoma cells is mediated by the tumor susceptibility gene 101." in: The Journal of biological chemistry , Vol. 281, Issue 12, pp. 8135-42, (2006) (PubMed).
-------------------	--

Images



Western Blotting

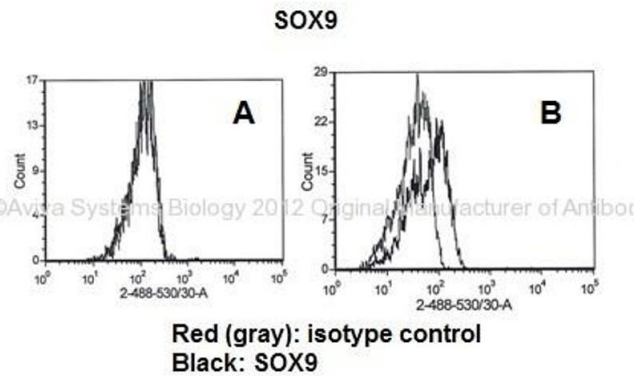
Image 1. WB Suggested Anti-SOX9 Antibody Titration: 0.2-1 ug/ml Positive Control: 721_B cell lysate



Host: Rabbit
Target Name: Sox10
Sample Type: Rat Brain Lysate
Antibody Dilution: 1.0µg/ml

Western Blotting

Image 2. Host: Rabbit Target Name: SOX10 Sample Tissue: Rat Brain Antibody Dilution: 1ug/ml



Flow Cytometry

Image 3. Researcher: Dr. Ade Kallas, University of tartu
Application: Flow Cytometry Species + Tissue/Cell type: A. Human H9 cells and B. Human H9 cells+Na+Butyrate
Primary antibody dilution: 2ug+1x10⁶ cells Secondary antibody: Chicken anti rabbit-Alexa Fluor 488 Secondary antibody dilution: 1:1000

Please check the [product details page](#) for more images. Overall 5 images are available for ABIN2780338.