

Datasheet for ABIN2780355  
**anti-CHD2 antibody (N-Term)**



[Go to Product page](#)

1 Image

## Overview

Quantity:	100 µL
Target:	CHD2
Binding Specificity:	N-Term
Reactivity:	Human, Rat, Mouse, Cow, Dog, Horse, Pig, Rabbit, Zebrafish (Danio rerio)
Host:	Rabbit
Clonality:	Polyclonal
Conjugate:	This CHD2 antibody is un-conjugated
Application:	Western Blotting (WB)

## Product Details

Immunogen:	The immunogen is a synthetic peptide directed towards the N-terminal region of Human CHD2
Sequence:	MMRNKDKSQE EDSSLHSNAS SHSASEEASG SDSGSQSESE QGSDPGSGHG
Predicted Reactivity:	Cow: 100%, Dog: 100%, Horse: 100%, Human: 100%, Mouse: 100%, Pig: 100%, Rabbit: 100%, Rat: 100%, Zebrafish: 90%
Characteristics:	This is a rabbit polyclonal antibody against CHD2. It was validated on Western Blot.
Purification:	Affinity Purified

## Target Details

Target:	CHD2
Alternative Name:	CHD2 ( <a href="#">CHD2 Products</a> )

## Target Details

Background:	<p>The CHD family of proteins is characterized by the presence of chromo (chromatin organization modifier) domains and SNF2-related helicase/ATPase domains. CHD genes alter gene expression possibly by modification of chromatin structure thus altering access of the transcriptional apparatus to its chromosomal DNA template. Alternatively spliced transcript variants encoding distinct isoforms have been found for this gene.</p> <p>Protein Interaction Partner: BEND7, TRIM41, TEK1, THAP1, MID2, EED, SRPK2, SUMO1, SIRT7, SUMO2, UBC,</p> <p>Protein Size: 501</p>
-------------	--

Molecular Weight:	57 kDa
-------------------	--------

Gene ID:	1106
----------	------

## Application Details

Restrictions:	For Research Use only
---------------	-----------------------

## Handling

Format:	Liquid
---------	--------

Concentration:	1 mg/mL
----------------	---------

Buffer:	Liquid. Purified antibody supplied in 1x PBS buffer with 0.09 % (w/v) sodium azide and 2 % sucrose.
---------	---

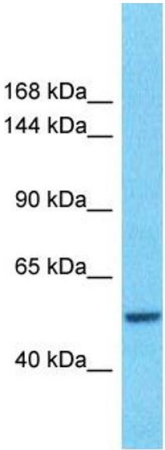
Preservative:	Sodium azide
---------------	--------------

Precaution of Use:	This product contains Sodium azide: a POISONOUS AND HAZARDOUS SUBSTANCE which should be handled by trained staff only.
--------------------	--

Handling Advice:	Avoid repeat freeze-thaw cycles.
------------------	----------------------------------

Storage:	-20 °C
----------	--------

Storage Comment:	For short term use, store at 2-8°C up to 1 week. For long term storage, store at -20°C in small aliquots to prevent freeze-thaw cycles.
------------------	---



Host: Rabbit  
Target Name: CHD2  
Sample Tissue: Ovary Tumor Lysate  
Antibody Dilution: 1.0µg/ml

**Western Blotting**

**Image 1.** Host: Rabbit Target Name: CHD2 Sample Type: Ovary tumor lysates Antibody Dilution: 1.0ug/ml