



[Go to Product page](#)

Datasheet for ABIN2780359
anti-Elf4 antibody (N-Term)

2 Images

Overview

Quantity:	100 µL
Target:	Elf4
Binding Specificity:	N-Term
Reactivity:	Human, Mouse, Rat, Cow, Dog, Horse, Rabbit, Guinea Pig
Host:	Rabbit
Clonality:	Polyclonal
Conjugate:	This Elf4 antibody is un-conjugated
Application:	Western Blotting (WB)

Product Details

Immunogen:	The immunogen is a synthetic peptide directed towards the N terminal region of human ELF4
Sequence:	MAITLQPSDL IFEFASNGMD DDIHQLEDPS VFPVIVEQV PYPDLLHLYS
Predicted Reactivity:	Cow: 93%, Dog: 93%, Guinea Pig: 93%, Horse: 93%, Human: 100%, Mouse: 93%, Rabbit: 93%, Rat: 93%
Characteristics:	This is a rabbit polyclonal antibody against ELF4. It was validated on Western Blot using a cell lysate as a positive control.
Purification:	Affinity Purified

Target Details

Target:	Elf4
---------	------

Target Details

Alternative Name:	ELF4 (Elf4 Products)
Background:	<p>ELF4 contains 1 ETS DNA-binding domain and belongs to the ETS family. It is transcriptional activator that binds to DNA sequences containing the consensus 5'-WGGA-3'. It transactivates promoters of the hematopoietic growth factor genes CSF2, IL3, IL8, and of the bovine lysozyme gene. It acts synergistically with RUNX1 to transactivate the IL3 promoter and also transactivates the PRF1 promoter in natural killer (NK) cells. ELF4 plays a role in the development and function of NK and NK T-cells and in innate immunity.</p> <p>Alias Symbols: MEF, ELFR</p> <p>Protein Interaction Partner: NPM1, SET, CASP4, UBC, PML, SKP2, KDM5B, FBXO4, FBXO7, UBB, RUNX1,</p> <p>Protein Size: 663</p>
Molecular Weight:	71 kDa
Gene ID:	2000
NCBI Accession:	NM_001421 , NP_001412
UniProt:	Q99607
Pathways:	Positive Regulation of Endopeptidase Activity

Application Details

Application Notes:	Optimal working dilutions should be determined experimentally by the investigator.
Comment:	Antigen size: 663 AA
Restrictions:	For Research Use only

Handling

Format:	Liquid
Concentration:	Lot specific
Buffer:	Liquid. Purified antibody supplied in 1x PBS buffer with 0.09 % (w/v) sodium azide and 2 % sucrose.
Preservative:	Sodium azide
Precaution of Use:	This product contains Sodium azide: a POISONOUS AND HAZARDOUS SUBSTANCE which should be handled by trained staff only.

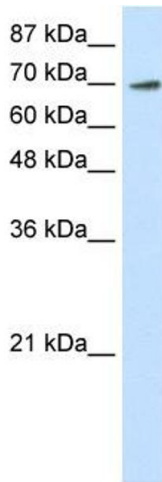
Handling

Handling Advice: Avoid repeated freeze-thaw cycles.

Storage: -20 °C

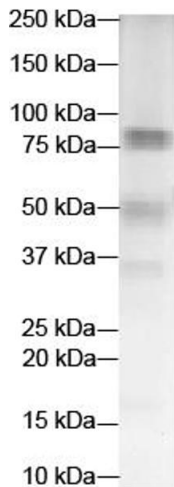
Storage Comment: For short term use, store at 2-8°C up to 1 week. For long term storage, store at -20°C in small aliquots to prevent freeze-thaw cycles.

Images



Western Blotting

Image 1. WB Suggested Anti-ELF4 Antibody Titration: 0.2-1 ug/ml ELISA Titer: 1:312500 Positive Control: Transfected 293T



Host: Rabbit
Target Name: ELF4
Sample Type: Human Liver
Antibody Dilution: 2.0 ug/ml

Western Blotting

Image 2. WB Suggested Anti-ELF4 Antibody Titration: 2 ug/ml ELISA Titer: 1:312500 Positive Control: Human Liver