

Datasheet for ABIN2780372
anti-GTF2H4 antibody (C-Term)[Go to Product page](#)

2 Images

Overview

Quantity:	100 µL
Target:	GTF2H4
Binding Specificity:	C-Term
Reactivity:	Human, Mouse, Rat, Guinea Pig, Dog, Cow, Goat, Rabbit, Zebrafish (Danio rerio)
Host:	Rabbit
Clonality:	Polyclonal
Conjugate:	This GTF2H4 antibody is un-conjugated
Application:	Western Blotting (WB)

Product Details

Immunogen:	The immunogen is a synthetic peptide directed towards the C terminal region of human GTF2H4
Sequence:	LSQVDFELL AHARELGVLV FENSAKRLMV VTPAGHSDVK RFWKRQKHSS
Predicted Reactivity:	Cow: 100%, Dog: 100%, Goat: 100%, Guinea Pig: 100%, Human: 100%, Mouse: 100%, Rabbit: 100%, Rat: 100%, Zebrafish: 87%
Characteristics:	This is a rabbit polyclonal antibody against GTF2H4. It was validated on Western Blot using a cell lysate as a positive control.
Purification:	Protein A purified

Target Details

Target:	GTF2H4
---------	--------

Target Details

Alternative Name:	GTF2H4 (GTF2H4 Products)
Background:	<p>GTF2H4 belongs to the TFB2 family. It is a component of the core-TFIID basal transcription factor involved in nucleotide excision repair (NER) of DNA and, when complexed to CAK, in RNA transcription by RNA polymerase II.</p> <p>Alias Symbols: TFB2, TFIID</p> <p>Protein Interaction Partner: UBC, CDK7, RNF11, TP53, MNAT1, GTF2H3, GTF2H2, GTF2H1, ERCC3, CCNH, XBP1P1, MYC, GTF2E1, ERCC5, MED21, BTAF1, TBP, POLR2A, GTF2F1, GTF2B, BRCA1,</p> <p>Protein Size: 462</p>
Molecular Weight:	52 kDa
Gene ID:	2968
NCBI Accession:	NM_001517 , NP_001508
UniProt:	Q92759
Pathways:	DNA Damage Repair

Application Details

Application Notes:	Optimal working dilutions should be determined experimentally by the investigator.
Comment:	Antigen size: 462 AA
Restrictions:	For Research Use only

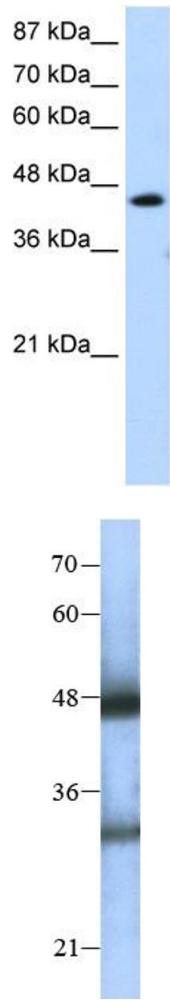
Handling

Format:	Liquid
Concentration:	Lot specific
Buffer:	Liquid. Purified antibody supplied in 1x PBS buffer with 0.09 % (w/v) sodium azide and 2 % sucrose.
Preservative:	Sodium azide
Precaution of Use:	This product contains Sodium azide: a POISONOUS AND HAZARDOUS SUBSTANCE which should be handled by trained staff only.
Handling Advice:	Avoid repeated freeze-thaw cycles.
Storage:	-20 °C

Handling

Storage Comment: For short term use, store at 2-8°C up to 1 week. For long term storage, store at -20°C in small aliquots to prevent freeze-thaw cycles.

Images



Western Blotting

Image 1. WB Suggested Anti-GTF2H4 Antibody Titration:
1.25ug/ml Positive Control: Jurkat cell lysate

Western Blotting

Image 2. Host: Rabbit Target Name: GTF2H4 Sample Type:
HepG2 Antibody Dilution: 1.0ug/ml