

Datasheet for ABIN2780373
anti-HIF1A antibody (Middle Region)



[Go to Product page](#)

5 Images

Overview

Quantity:	100 µL
Target:	HIF1A
Binding Specificity:	Middle Region
Reactivity:	Human, Mouse, Rat, Cow, Rabbit, Dog, Goat, Horse, Guinea Pig
Host:	Rabbit
Clonality:	Polyclonal
Conjugate:	This HIF1A antibody is un-conjugated
Application:	Western Blotting (WB)

Product Details

Immunogen:	The immunogen is a synthetic peptide directed towards the middle region of human HIF1A
Sequence:	VKGCKSSEQN GMEQKTIILI PSDLACRLLG QSMDESGLPQ LTSYDCEVNA
Predicted Reactivity:	Cow: 100%, Dog: 100%, Goat: 100%, Guinea Pig: 100%, Horse: 100%, Human: 100%, Mouse: 100%, Rabbit: 100%, Rat: 100%
Characteristics:	This is a rabbit polyclonal antibody against HIF1A. It was validated on Western Blot using a cell lysate as a positive control.
Purification:	Affinity Purified

Target Details

Target:	HIF1A
---------	-------

Target Details

Alternative Name: [HIF1A \(HIF1A Products\)](#)

Background: Hypoxia-inducible factor-1 (HIF1) is a transcription factor found in mammalian cells cultured under reduced oxygen tension that plays an essential role in cellular and systemic homeostatic responses to hypoxia. HIF1 is a heterodimer composed of an alpha s

Alias Symbols: HIF-1alpha, HIF1, HIF1-ALPHA, MOP1, PASD8, bHLHe78

Protein Interaction Partner: HDAC1, EP300, ARNTL, HDAC3, VHL, UBC, SUMO3, EGLN3, HIF1AN, SENP3, HSP90AA1, ATM, ARNT2, SART3, SUMO2, SIN3A, TRIM28, HSPA4, TRAF6, GNB2L1, EGLN1, SQSTM1, SUMO1, HEXIM1, LAMP2, HSPA8, RB1, SP1, SMAD3, MAFK, PCGF2, TCEB2, TCEB1, MAFG, HSP90AB1, DCUN1D1, RB

Protein Size: 826

Molecular Weight: 93 kDa

Gene ID: 3091

NCBI Accession: [NM_001530, NP_001521](#)

UniProt: [Q16665](#)

Pathways: [Positive Regulation of Peptide Hormone Secretion](#), [Regulation of Hormone Metabolic Process](#), [Regulation of Hormone Biosynthetic Process](#), [Cellular Response to Molecule of Bacterial Origin](#), [Carbohydrate Homeostasis](#), [Transition Metal Ion Homeostasis](#), [Tube Formation](#), [Regulation of Carbohydrate Metabolic Process](#), [Signaling Events mediated by VEGFR1 and VEGFR2](#), [VEGFR1 Specific Signals](#), [Warburg Effect](#)

Application Details

Application Notes: Optimal working dilutions should be determined experimentally by the investigator.

Comment: Antigen size: 826 AA

Restrictions: For Research Use only

Handling

Format: Liquid

Concentration: Lot specific

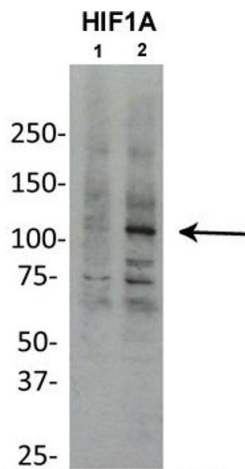
Buffer: Liquid. Purified antibody supplied in 1x PBS buffer with 0.09 % (w/v) sodium azide and 2 % sucrose.

Preservative: Sodium azide

Handling

Precaution of Use:	This product contains Sodium azide: a POISONOUS AND HAZARDOUS SUBSTANCE which should be handled by trained staff only.
Handling Advice:	Avoid repeated freeze-thaw cycles.
Storage:	-20 °C
Storage Comment:	For short term use, store at 2-8°C up to 1 week. For long term storage, store at -20°C in small aliquots to prevent freeze-thaw cycles.

Images



See Immunoblot 3 Data and Customer Feedback tab for more information.

Western Blotting

Image 1. Sample Type: Chicken Liver Nuclei (50ug)

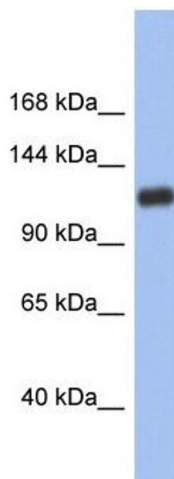
Primary Dilution: 1:1000

Secondary Antibody: goat anti-rabbit HRP

Secondary Dilution: 1:2000

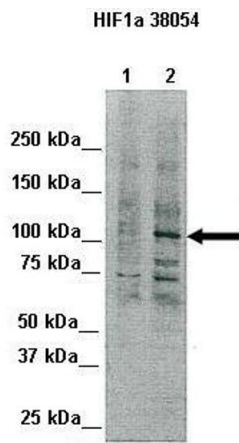
Image Submitted By: Silvia Moore

Weill Cornell Medical College



Western Blotting

Image 2. WB Suggested Anti-HIF1A Antibody Titration: 0.2-1 ug/ml
ELISA Titer: 1:312500
Positive Control: Human Small Intestine



Western Blotting

Image 3. Lanes: Lane 1: 80ug Chicken liver (nuclei) Primary Antibody Dilution: 1:1000 Secondary Antibody: Goat anti-rabbit IgG Secondary Antibody Dilution: 1:2,000 Gene Name: HIF1A Submitted by: Silvia Moore, Weill Medical College of Cornell University

See Western blot 4 Data and Customer Feedback for more information

Please check the [product details page](#) for more images. Overall 5 images are available for ABIN2780373.