

Datasheet for ABIN2780392
anti-FLI1 antibody (N-Term)[Go to Product page](#)

4 Images

1 Publication

Overview

Quantity:	100 µL
Target:	FLI1
Binding Specificity:	N-Term
Reactivity:	Human, Mouse, Rat, Cow, Dog, Guinea Pig, Rabbit, Horse, Zebrafish (Danio rerio)
Host:	Rabbit
Clonality:	Polyclonal
Conjugate:	This FLI1 antibody is un-conjugated
Application:	Western Blotting (WB)

Product Details

Immunogen:	The immunogen is a synthetic peptide directed towards the N terminal region of human FLI1
Sequence:	MDGTIKEALS VVSDDQSLFD SAYGAAAHLP KADMTASGSP DYGPQPHKINP
Predicted Reactivity:	Cow: 100%, Dog: 100%, Guinea Pig: 100%, Horse: 100%, Human: 100%, Mouse: 100%, Rabbit: 100%, Rat: 100%, Zebrafish: 79%
Characteristics:	This is a rabbit polyclonal antibody against FLI1. It was validated on Western Blot using a cell lysate as a positive control.
Purification:	Protein A purified

Target Details

Target:	FLI1
---------	------

Target Details

Alternative Name:	FLI1 (FLI1 Products)
Background:	<p>Friend leukemia integration 1 (Fli-1) is a member of the ETS family of transcriptional regulatory proteins that contain a highly conserved and structurally unique DNA binding ETS domain.</p> <p>Alias Symbols: EWSR2, SIC-1</p> <p>Protein Interaction Partner: SOX30, SIAH1, CTBP2, UBC, SMAD9, GATA1, FMNL1, SUMO1, UBE2I, PIAS2, PIAS1, SMAD3, ETV6, KLF1, TDP2, SRF, ERG, EWSR1, ELK1, BRCA1, TGFB2, STYXL1,</p> <p>Protein Size: 452</p>
Molecular Weight:	51 kDa
Gene ID:	2313
NCBI Accession:	NM_002017 , NP_002008
UniProt:	Q01543

Application Details

Application Notes:	Optimal working dilutions should be determined experimentally by the investigator.
Comment:	Antigen size: 452 AA
Restrictions:	For Research Use only

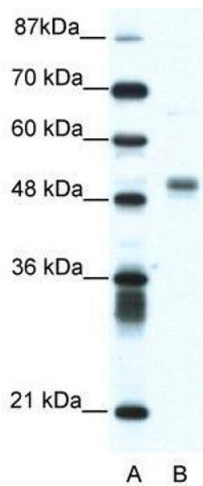
Handling

Format:	Liquid
Concentration:	Lot specific
Buffer:	Liquid. Purified antibody supplied in 1x PBS buffer with 0.09 % (w/v) sodium azide and 2 % sucrose.
Preservative:	Sodium azide
Precaution of Use:	This product contains Sodium azide: a POISONOUS AND HAZARDOUS SUBSTANCE which should be handled by trained staff only.
Handling Advice:	Avoid repeated freeze-thaw cycles.
Storage:	-20 °C
Storage Comment:	For short term use, store at 2-8°C up to 1 week. For long term storage, store at -20°C in small aliquots to prevent freeze-thaw cycles.

Publications

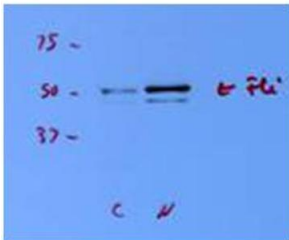
Product cited in: Schlögl, Keinrath, Zimmermann, Scherer, Leeb, Pfurtscheller: "A fully automated correction method of EOG artifacts in EEG recordings." in: **Clinical neurophysiology : official journal of the International Federation of Clinical Neurophysiology**, Vol. 118, Issue 1, pp. 98-104, (2006) ([PubMed](#)).

Images



Western Blotting

Image 1. WB Suggested Anti-FLI1
Antibody Titration: 1.25 µg/mL ELISA Titer: 1:312500
Positive Control: Jurkat cell lysate
FLI1 is strongly supported by BioGPS gene expression data to be expressed in Human Jurkat cells

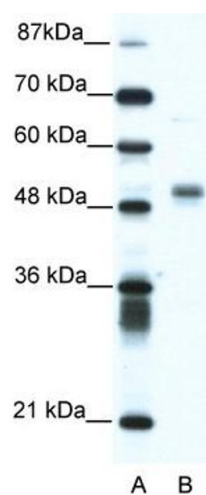


FLI1 (ARP38096_T100)
Western Blot
Sample: Porcine Endothelial Cell
Dilution: 1:1000

Application data in forum

Western Blotting

Image 2.



Western Blotting

Image 3. WB Suggested Anti-FLI1 Antibody Titration: 1.25ug/ml ELISA Titer: 1:312500 Positive Control: Jurkat cell lysate FLI1 is strongly supported by BioGPS gene expression data to be expressed in Human Jurkat cells

Please check the [product details page](#) for more images. Overall 4 images are available for ABIN2780392.