



[Go to Product page](#)

Datasheet for ABIN2780397  
**anti-GTF2F1 antibody (N-Term)**

3 Images

Overview

Quantity:	100 µL
Target:	GTF2F1
Binding Specificity:	N-Term
Reactivity:	Human, Mouse, Rat, Dog, Guinea Pig, Rabbit, Cow, Horse, Saccharomyces cerevisiae
Host:	Rabbit
Clonality:	Polyclonal
Conjugate:	This GTF2F1 antibody is un-conjugated
Application:	Western Blotting (WB)

Product Details

Immunogen:	The immunogen is a synthetic peptide directed towards the N terminal region of human GTF2F1
Sequence:	DKVNFATWNQ ARLERDLSNK KIYQEEEMPE SGAGSEFN RK LREEARRK KY
Predicted Reactivity:	Cow: 100%, Dog: 100%, Guinea Pig: 100%, Horse: 100%, Human: 100%, Mouse: 100%, Rabbit: 100%, Rat: 100%, Yeast: 90%
Characteristics:	This is a rabbit polyclonal antibody against GTF2F1. It was validated on Western Blot using a cell lysate as a positive control.
Purification:	Affinity Purified

Target Details

Target:	GTF2F1
---------	--------

## Target Details

---

Alternative Name:	GTF2F1 ( <a href="#">GTF2F1 Products</a> )
Background:	<p>GTF2F1 is a general transcription initiation factor that binds to RNA polymerase II and helps to recruit it to the initiation complex in collaboration with TFIIB. It promotes transcription elongation.</p> <p>Alias Symbols: BTF4, RAP74, TF2F1, TFIIF</p> <p>Protein Interaction Partner: ABL1, UBC, tat, PUS1, DUS3L, VPS29, SNF8, PSAP, BCAT1, TCEA1, GTF2B, POLR2C, GTF2F2, CDC73, MMS19, SF3A3, SRSF9, COIL, SNRPA, POLR2A, EEF1B2, CIRBP, CDK9, POLR2D, GTF2H1, GTF2E1, ERCC2, CDK8, CCNC, MAGEC1, TAF1, HNRNPU, FCP1, CSNK2A1, CCNT1, Gtf3c6, POLR2</p> <p>Protein Size: 517</p>
Molecular Weight:	58 kDa
Gene ID:	2962
NCBI Accession:	<a href="#">NM_002096</a> , <a href="#">NP_002087</a>
UniProt:	<a href="#">P35269</a>

## Application Details

---

Application Notes:	Optimal working dilutions should be determined experimentally by the investigator.
Comment:	Antigen size: 517 AA
Restrictions:	For Research Use only

## Handling

---

Format:	Liquid
Concentration:	Lot specific
Buffer:	Liquid. Purified antibody supplied in 1x PBS buffer with 0.09 % (w/v) sodium azide and 2 % sucrose.
Preservative:	Sodium azide
Precaution of Use:	This product contains Sodium azide: a POISONOUS AND HAZARDOUS SUBSTANCE which should be handled by trained staff only.
Handling Advice:	Avoid repeated freeze-thaw cycles.
Storage:	-20 °C

## Handling

Storage Comment: For short term use, store at 2-8°C up to 1 week. For long term storage, store at -20°C in small aliquots to prevent freeze-thaw cycles.

## Images

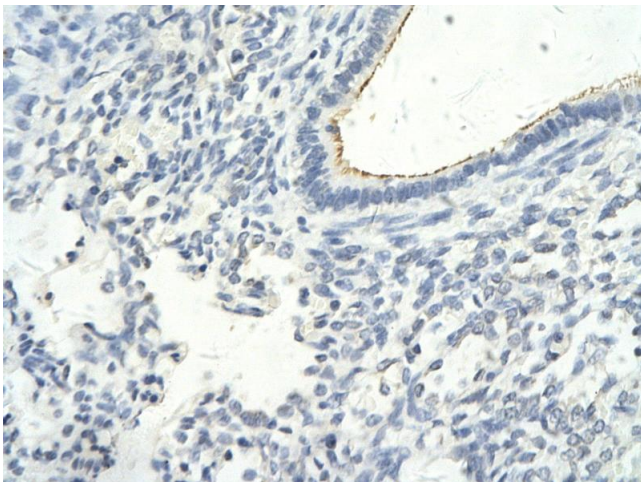


### Western Blotting

**Image 1.** WB Suggested Anti-GTF2F1 Antibody Titration: 0.2-1 ug/ml ELISA Titer: 1:12500 Positive Control: HT1080 cell lysate GTF2F1 is strongly supported by BioGPS gene expression data to be expressed in Human HT1080 cells

### Western Blotting

**Image 2.** WB Suggested Anti-GTF2F1 Antibody Titration: 0.2-1 µg/mL ELISA Titer: 1:12500 Positive Control: HT1080 cell lysate GTF2F1 is strongly supported by BioGPS gene expression data to be expressed in Human HT1080 cells



### Immunohistochemistry

**Image 3.** Rabbit Anti-GTF2F1 antibody Paraffin Embedded Tissue: Human Lung cell Cellular Data: Epithelial cells of renal tubule Antibody Concentration: 4.0-8.0 ug/ml Magnification: 400X