



[Go to Product page](#)

Datasheet for ABIN2780407

anti-IGHMBP2 antibody (N-Term)

1 Image

1 Publication

Overview

Quantity:	100 µL
Target:	IGHMBP2
Binding Specificity:	N-Term
Reactivity:	Human, Mouse, Rat, Cow, Dog, Guinea Pig
Host:	Rabbit
Clonality:	Polyclonal
Conjugate:	This IGHMBP2 antibody is un-conjugated
Application:	Western Blotting (WB)

Product Details

Immunogen:	The immunogen is a synthetic peptide corresponding to a region of Mouse
Sequence:	QLLELERDAE VEERRSWQEH SSLRELQSRG VCLLKLQVSS QRTGLYGQRL
Predicted Reactivity:	Cow: 100%, Dog: 100%, Guinea Pig: 100%, Human: 100%, Mouse: 100%, Rat: 100%
Characteristics:	This is a rabbit polyclonal antibody against Ighmbp2. It was validated on Western Blot.
Purification:	Affinity Purified

Target Details

Target:	IGHMBP2
Alternative Name:	Ighmbp2 (IGHMBP2 Products)
Background:	Ighmbp2 is a 5' to 3' helicase that unwinds RNA and DNA duplexes in an ATP-dependent

Target Details

reaction. Ighmbp2 acts as a transcription regulator. Ighmbp2 is required for the transcriptional activation of the flounder liver-type antifreeze protein gene. Ighmbp2 exhibits strong binding specificity to the enhancer element B of the flounder antifreeze protein gene intron. Ighmbp2 binds to the insulin II gene RIPE3B enhancer region. Ighmbp2 may be involved in translation. Ighmbp2 is a DNA-binding protein specific to 5'-phosphorylated single-stranded guanine-rich sequence related to the immunoglobulin mu chain switch region. Ighmbp2 preferentially binds to the 5'-GGGCT-3' motif. Ighmbp2 interacts with tRNA-Tyr.

Alias Symbols: AEP, Catf1, RIPE3b1, Smbp-2, Smbp2, Smubp2, nmd, sma

Protein Interaction Partner: Gtf3c1, Hnrnp1, Ruvbl1, Abt1, Zbtb14, Tyr, Ighmbp2, Ruvbl2, Hspa1b, Slit3, Robo1,

Protein Size: 993

Molecular Weight: 109 kDa

Gene ID: 20589

NCBI Accession: [NM_009212](#), [NP_033238](#)

UniProt: [P40694](#)

Application Details

Application Notes: Optimal working dilutions should be determined experimentally by the investigator.

Comment: Antigen size: 993 AA

Restrictions: For Research Use only

Handling

Format: Liquid

Concentration: Lot specific

Buffer: Liquid. Purified antibody supplied in 1x PBS buffer with 0.09 % (w/v) sodium azide and 2 % sucrose.

Preservative: Sodium azide

Precaution of Use: This product contains Sodium azide: a POISONOUS AND HAZARDOUS SUBSTANCE which should be handled by trained staff only.

Handling Advice: Avoid repeated freeze-thaw cycles.

Storage: -20 °C

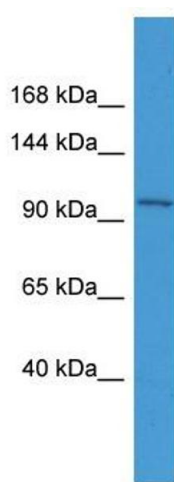
Handling

Storage Comment: For short term use, store at 2-8°C up to 1 week. For long term storage, store at -20°C in small aliquots to prevent freeze-thaw cycles.

Publications

Product cited in: Hu, Lausted, Yoo, Yan, Brightman, Chen, Wang, Bu, Hood: "Quantitative liver-specific protein fingerprint in blood: a signature for hepatotoxicity." in: **Theranostics**, Vol. 4, Issue 2, pp. 215-28, (2014) ([PubMed](#)).

Images



Western Blotting

Image 1. WB Suggested Anti-Ighmbp2 Antibody Titration: 0.2-1 ug/ml ELISA Titer: 1:312500 Positive Control: Mouse Heart