

Datasheet for ABIN2780408
anti-IRF1 antibody (N-Term)[Go to Product page](#)

3 Images

Overview

Quantity:	100 µL
Target:	IRF1
Binding Specificity:	N-Term
Reactivity:	Human, Mouse, Rat, Dog, Rabbit, Cow, Guinea Pig, Sheep, Horse, Zebrafish (Danio rerio)
Host:	Rabbit
Clonality:	Polyclonal
Conjugate:	This IRF1 antibody is un-conjugated
Application:	Western Blotting (WB), Immunohistochemistry (IHC)

Product Details

Immunogen:	The immunogen is a synthetic peptide directed towards the N terminal region of human IRF1
Sequence:	MPITRMRMRP WLEMQINSNQ IPGLIWINKE EMIFQIPWKH AAKHGWDINK
Predicted Reactivity:	Cow: 100%, Dog: 100%, Guinea Pig: 100%, Horse: 100%, Human: 100%, Mouse: 100%, Rabbit: 100%, Rat: 100%, Sheep: 100%, Zebrafish: 92%
Characteristics:	This is a rabbit polyclonal antibody against IRF1. It was validated on Western Blot using a cell lysate as a positive control.
Purification:	Affinity Purified

Target Details

Target:	IRF1
---------	------

Target Details

Alternative Name:	IRF1 (IRF1 Products)
Background:	<p>IRF1 is interferon regulatory factor 1, a member of the interferon regulatory transcription factor (IRF) family. IRF1 serves as an activator of interferons alpha and beta transcription, and in mouse it has been shown to be required for double-stranded RNA induction of these genes. IRF1 also functions as a transcription activator of genes induced by interferons alpha, beta, and gamma. Further, IRF1 has been shown to play roles in regulating apoptosis and tumor-suppression.</p> <p>Alias Symbols: IRF-1, MAR</p> <p>Protein Interaction Partner: SUMO2, SUMO3, IRF2, KAT2B, EP300, PRDM1, UBC, BIRC3, MDM2, HIST1H3A, CBL, HSP90AA1, HSPA1A, Tbk1, STUB1, SPI1, QARS, IRF8, CDKN1B, TRIM28, SET, SP2, IRF9, YBX1, NPM1, TRMT2A, HCFC1, SEC63, KEAP1, TRAF3, CREBBP, tat, SMARCA4, STAT1, HMGA1, RELA, NFKB1, KAT</p> <p>Protein Size: 325</p>
Molecular Weight:	37 kDa
Gene ID:	3659
NCBI Accession:	NM_002198 , NP_002189
UniProt:	P10914
Pathways:	Interferon-gamma Pathway , Response to Growth Hormone Stimulus , Positive Regulation of Immune Effector Process , Hepatitis C , Autophagy

Application Details

Application Notes:	Optimal working dilutions should be determined experimentally by the investigator.
Comment:	Antigen size: 325 AA
Restrictions:	For Research Use only

Handling

Format:	Liquid
Concentration:	Lot specific
Buffer:	Liquid. Purified antibody supplied in 1x PBS buffer with 0.09 % (w/v) sodium azide and 2 % sucrose.
Preservative:	Sodium azide

Handling

Precaution of Use:	This product contains Sodium azide: a POISONOUS AND HAZARDOUS SUBSTANCE which should be handled by trained staff only.
Handling Advice:	Avoid repeated freeze-thaw cycles.
Storage:	-20 °C
Storage Comment:	For short term use, store at 2-8°C up to 1 week. For long term storage, store at -20°C in small aliquots to prevent freeze-thaw cycles.

Images

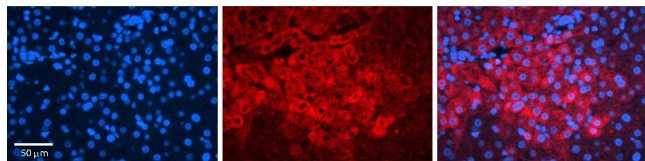


Western Blotting

Image 1. WB Suggested Anti-IRF1 Antibody Titration: 0.2-1 ug/ml Positive Control: HepG2 cell lysate

Western Blotting

Image 2. Host: Rabbit Target Name: IRF1 Sample Tissue: Rat Liver Antibody Dilution: 1ug/ml



Immunohistochemistry

Image 3. Rabbit Anti-IRF1 Antibody Formalin Fixed Paraffin Embedded Tissue: Human Liver Tissue Observed Staining: Cytoplasm in hepatocytes Primary Antibody Concentration: 1:100 Other Working Concentrations: 1:600 Secondary Antibody: Donkey anti-Rabbit-Cy3 Secondary Antibody Concentration: 1:200 Magnification: 20X Exposure Time: 0.5 - 2.0 sec