

Datasheet for ABIN2780418
anti-MXD1 antibody (N-Term)



[Go to Product page](#)

1 Image

Overview

Quantity:	100 µL
Target:	MXD1
Binding Specificity:	N-Term
Reactivity:	Human, Mouse, Rat, Cow, Rabbit, Guinea Pig, Dog, Horse, Zebrafish (Danio rerio), Sheep
Host:	Rabbit
Clonality:	Polyclonal
Conjugate:	This MXD1 antibody is un-conjugated
Application:	Western Blotting (WB)

Product Details

Immunogen:	The immunogen is a synthetic peptide directed towards the N terminal region of human MXD1
Sequence:	MAAAVRMNIQ MLLEAADYLE RREREAHGY ASMLPYNNKD RDALKRRNKS
Predicted Reactivity:	Cow: 100%, Dog: 100%, Guinea Pig: 100%, Horse: 100%, Human: 100%, Mouse: 100%, Rabbit: 100%, Rat: 100%, Sheep: 92%, Zebrafish: 100%
Characteristics:	This is a rabbit polyclonal antibody against MXD1. It was validated on Western Blot using a cell lysate as a positive control.
Purification:	Affinity Purified

Target Details

Target:	MXD1
---------	------

Target Details

Alternative Name:	MXD1 (MXD1 Products)
Background:	<p>MAX dimerization protein belongs to a subfamily of MAX-interacting proteins. MXD1 competes with MYC for binding to MAX to form a sequence-specific DNA-binding complex, acts as a transcriptional repressor (while MYC appears to function as an activator) and is a candidate tumor suppressor. MAX dimerization protein belongs to a subfamily of MAX-interacting proteins. This protein competes with MYC for binding to MAX to form a sequence-specific DNA-binding complex, acts as a transcriptional repressor (while MYC appears to function as an activator) and is a candidate tumor suppressor. Publication Note: This RefSeq record includes a subset of the publications that are available for this gene. Please see the Entrez Gene record to access additional publications.</p> <p>Alias Symbols: MAD, MAD1, MGC104659, BHLHC58</p> <p>Protein Interaction Partner: HDAC2, MAX, VDR, APP, BIRC2, RPS6KB1, RPS6KA1, AKT1, SIN3A, KDM5A, SIN3B, PRAM1, SMC3, SAP30, MXD1, MYC, CD2, MYCL, MYCN, PML, MLX, HDAC1,</p> <p>Protein Size: 221</p>
Molecular Weight:	25 kDa
Gene ID:	4084
NCBI Accession:	NM_002357 , NP_002348
UniProt:	Q0VFI9

Application Details

Application Notes:	Optimal working dilutions should be determined experimentally by the investigator.
Comment:	Antigen size: 221 AA
Restrictions:	For Research Use only

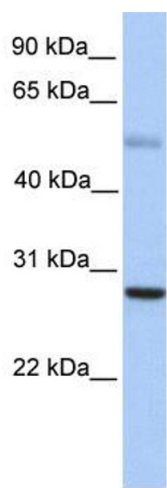
Handling

Format:	Liquid
Concentration:	Lot specific
Buffer:	Liquid. Purified antibody supplied in 1x PBS buffer with 0.09 % (w/v) sodium azide and 2 % sucrose.
Preservative:	Sodium azide
Precaution of Use:	This product contains Sodium azide: a POISONOUS AND HAZARDOUS SUBSTANCE which

Handling

	should be handled by trained staff only.
Handling Advice:	Avoid repeated freeze-thaw cycles.
Storage:	-20 °C
Storage Comment:	For short term use, store at 2-8°C up to 1 week. For long term storage, store at -20°C in small aliquots to prevent freeze-thaw cycles.

Images



Western Blotting

Image 1. WB Suggested Anti-MXD1 Antibody Titration: 0.2-1 ug/ml Positive Control: Human Muscle