



[Go to Product page](#)

Datasheet for ABIN2780420  
**anti-Mafg antibody (N-Term)**

3 Images

1 Publication

### Overview

Quantity:	100 µL
Target:	Mafg
Binding Specificity:	N-Term
Reactivity:	Human, Mouse, Rat, Dog, Cow, Guinea Pig, Horse, Zebrafish (Danio rerio)
Host:	Rabbit
Clonality:	Polyclonal
Conjugate:	This Mafg antibody is un-conjugated
Application:	Western Blotting (WB)

### Product Details

Immunogen:	The immunogen is a synthetic peptide directed towards the N terminal region of human MAFG
Sequence:	MTTPNKGKKA LKVKREGEN GTSLTDEELV TMSVRELNQH LRGLSKEEIV
Predicted Reactivity:	Cow: 100%, Dog: 100%, Guinea Pig: 100%, Horse: 100%, Human: 100%, Mouse: 100%, Rat: 100%, Zebrafish: 93%
Characteristics:	This is a rabbit polyclonal antibody against MAFG. It was validated on Western Blot using a cell lysate as a positive control.
Purification:	Affinity Purified

### Target Details

Target:	Mafg
---------	------

## Target Details

---

Alternative Name:	MAFG ( <a href="#">Mafg Products</a> )
Background:	<p>Since they lack a putative transactivation domain, the small Mafs behave as transcriptional repressors when they dimerize among themselves. However, they seem to serve as transcriptional activators by dimerizing with other (usually larger) basic-zipper proteins and recruiting them to specific DNA-binding sites. Small Maf proteins heterodimerize with Fos and may act as competitive repressors of the NF-E2 transcription factor. Transcription factor, component of erythroid-specific transcription factor NF-E2.</p> <p>Alias Symbols: MGC13090, MGC20149, hMAF</p> <p>Protein Interaction Partner: NFE2L2, PARP1, MAFG, DDIT3, BACH1, ATF3, BACH2, BATF3, MAFF, NFE2L3, NFIL3, NFE2L1, PIDD1, UBC, SNRPN, HSP90AA1, HIF1A, CYP2E1, SUMO1, SUMO2, SUMO3, PPP1CA, GTF2A1L, MED31, RBM48, CHD3, NFE2, PAX6, CREBBP, VIM, MAF, PRRX1, HOXD12,</p> <p>Protein Size: 162</p>
Molecular Weight:	18 kDa
Gene ID:	4097
NCBI Accession:	<a href="#">NM_002359</a> , <a href="#">NP_002350</a>
UniProt:	<a href="#">O15525</a>

## Application Details

---

Application Notes:	Optimal working dilutions should be determined experimentally by the investigator.
Comment:	Antigen size: 162 AA
Restrictions:	For Research Use only

## Handling

---

Format:	Liquid
Concentration:	Lot specific
Buffer:	Liquid. Purified antibody supplied in 1x PBS buffer with 0.09 % (w/v) sodium azide and 2 % sucrose.
Preservative:	Sodium azide
Precaution of Use:	This product contains Sodium azide: a POISONOUS AND HAZARDOUS SUBSTANCE which should be handled by trained staff only.

## Handling

Handling Advice: Avoid repeated freeze-thaw cycles.

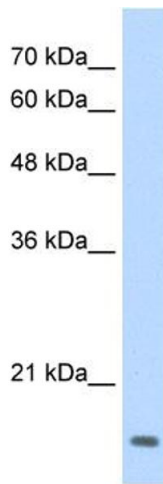
Storage: -20 °C

Storage Comment: For short term use, store at 2-8°C up to 1 week. For long term storage, store at -20°C in small aliquots to prevent freeze-thaw cycles.

## Publications

Product cited in: Schiene-Fischer, Yu: "Receptor accessory folding helper enzymes: the functional role of peptidyl prolyl cis/trans isomerases." in: **FEBS letters**, Vol. 495, Issue 1-2, pp. 1-6, (2001) ([PubMed](#)).

## Images



**MAFG**

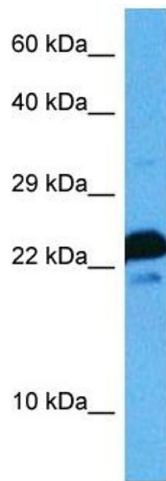


### Western Blotting

**Image 1.** WB Suggested Anti-MAFG Antibody Titration: 0.2-1 ug/ml Positive Control: HepG2 cell lysate

### Western Blotting

**Image 2.** Host: Rabbit Target Name: MAFG Sample Tissue: Human 293T Antibody Dilution: 1.0ug/ml



### Western Blotting

**Image 3.** Host: Rat Target Name: MAFG Sample Tissue: Rat Skeletal Muscle Antibody Dilution: 1ug/ml