

Datasheet for ABIN2780427
anti-Msx2/Hox8 antibody (N-Term)

2 Images

[Go to Product page](#)

Overview

Quantity:	100 µL
Target:	Msx2/Hox8 (Msx2)
Binding Specificity:	N-Term
Reactivity:	Human, Mouse, Rat, Dog, Cow, Horse, Rabbit, Goat
Host:	Rabbit
Clonality:	Polyclonal
Conjugate:	This Msx2/Hox8 antibody is un-conjugated
Application:	Western Blotting (WB), Immunohistochemistry (IHC)

Product Details

Immunogen:	The immunogen is a synthetic peptide directed towards the N terminal region of human MSX2
Sequence:	MASPSKGNDL FSPDEEGPAV VAGPGPGPGG AEGAAEERRV KVSSLPFSVE
Predicted Reactivity:	Cow: 100%, Dog: 100%, Goat: 93%, Horse: 100%, Human: 100%, Mouse: 93%, Rabbit: 93%, Rat: 93%
Characteristics:	This is a rabbit polyclonal antibody against MSX2. It was validated on Western Blot and immunohistochemistry.
Purification:	Protein A purified

Target Details

Target:	Msx2/Hox8 (Msx2)
---------	------------------

Target Details

Alternative Name:	MSX2 (Msx2 Products)
Background:	<p>MSX2 is a member of the muscle segment homeobox gene family. The protein is a transcriptional repressor whose normal activity may establish a balance between survival and apoptosis of neural crest-derived cells required for proper craniofacial morphogenesis. The protein may also have a role in promoting cell growth under certain conditions and may be an important target for the RAS signaling pathways. Mutations in this gene are associated with parietal foramina 1 and craniosynostosis type 2. This gene encodes a member of the muscle segment homeobox gene family. The encoded protein is a transcriptional repressor whose normal activity may establish a balance between survival and apoptosis of neural crest-derived cells required for proper craniofacial morphogenesis. The encoded protein may also have a role in promoting cell growth under certain conditions and may be an important target for the RAS signaling pathways. Mutations in this gene are associated with parietal foramina 1 and craniosynostosis type 2.</p> <p>Alias Symbols: FPP, MSH, PFM, CRS2, HOX8, PFM1</p> <p>Protein Interaction Partner: ATXN1, PIAS2, UBC, XRCC5, XRCC6, ZDHHC2, TLE2, TLE1, PPARG, POU2AF1, NR3C1, POLR3D, SPEN, ZBTB17, RUNX2, DLX5, MAGED1, GTF2F2, GTF2F1, MSX1, DLX2, MSX2, CEBPA, PITX2,</p> <p>Protein Size: 267</p>
Molecular Weight:	29 kDa
Gene ID:	4488
NCBI Accession:	NM_002449 , NP_002440
UniProt:	P35548

Application Details

Application Notes:	Optimal working dilutions should be determined experimentally by the investigator.
Comment:	Antigen size: 267 AA
Restrictions:	For Research Use only

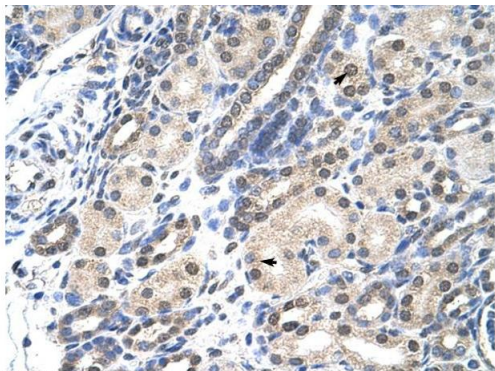
Handling

Format:	Liquid
Concentration:	Lot specific
Buffer:	Liquid. Purified antibody supplied in 1x PBS buffer with 0.09 % (w/v) sodium azide and 2 %

Handling

	sucrose.
Preservative:	Sodium azide
Precaution of Use:	This product contains Sodium azide: a POISONOUS AND HAZARDOUS SUBSTANCE which should be handled by trained staff only.
Handling Advice:	Avoid repeated freeze-thaw cycles.
Storage:	-20 °C
Storage Comment:	For short term use, store at 2-8°C up to 1 week. For long term storage, store at -20°C in small aliquots to prevent freeze-thaw cycles.

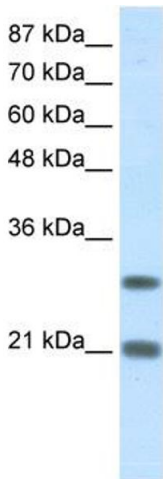
Images



Rabbit Anti-MSX2 Antibody
Catalog Number: ARP38153
Lot Number: QC10925
Paraffin Embedded Tissue: Human Kidney
Cells with Positive label: Epithelial cells of renal tubule (Indicated with Arrows)
Antibody Concentration: 4.0-8.0 µg/ml
Magnification: 400X

Immunohistochemistry

Image 1. Human kidney



Western Blotting

Image 2. WB Suggested Anti-MSX2 Antibody Titration:
1.25ug/ml Positive Control: Jurkat cell lysate