

Datasheet for ABIN2780437  
**anti-NME1 antibody (C-Term)**



[Go to Product page](#)

3 Images

## Overview

Quantity:	100 µL
Target:	NME1
Binding Specificity:	C-Term
Reactivity:	Human, Mouse, Rat, Dog, Pig, Cow, Horse, Rabbit, Guinea Pig, Saccharomyces cerevisiae
Host:	Rabbit
Clonality:	Polyclonal
Conjugate:	This NME1 antibody is un-conjugated
Application:	Western Blotting (WB), Dot Blot (DB)

## Product Details

Sequence:	NVVKTGRVML GETNPADSKP GTIRGDFCIQ VGRNIIHGSD SVKSAEKEIS
Predicted Reactivity:	Cow: 100%, Dog: 100%, Guinea Pig: 92%, Horse: 100%, Human: 100%, Mouse: 100%, Pig: 100%, Rabbit: 100%, Rat: 100%, Yeast: 92%
Characteristics:	This is a rabbit polyclonal antibody against Nme1. It was validated on Western Blot.
Purification:	Affinity Purified

## Target Details

Target:	NME1
Alternative Name:	Nme1 ( <a href="#">NME1 Products</a> )
Background:	Nme1 has a major role in the synthesis of nucleoside triphosphates other than ATP. The ATP

## Target Details

gamma phosphate is transferred to the NDP beta phosphate via a ping-pong mechanism, using a phosphorylated active-site intermediate. It possesses nucleoside-diphosphate kinase, serine/threonine-specific protein kinase, geranyl and farnesyl pyrophosphate kinase, histidine protein kinase and 3'-5' exonuclease activities. It is involved in cell proliferation, differentiation and development, signal transduction, G protein-coupled receptor endocytosis, and gene expression. It is required for neural development including neural patterning and cell fate determination.

Alias Symbols: AL024257, NDPK-A, NM23-M1, NM23A

Protein Interaction Partner: Plcb1, Rara,

Protein Size: 152

Molecular Weight: 17 kDa

Gene ID: 18102

NCBI Accession: [NM\\_008704](#), [NP\\_032730](#)

UniProt: [P15532](#)

Pathways: [Apoptosis](#), [Nucleotide Phosphorylation](#), [Carbohydrate Homeostasis](#), [Ribonucleoside Biosynthetic Process](#)

## Application Details

Application Notes: Optimal working dilutions should be determined experimentally by the investigator.

Comment: Antigen size: 152 AA

Restrictions: For Research Use only

## Handling

Format: Liquid

Concentration: Lot specific

Buffer: Liquid. Purified antibody supplied in 1x PBS buffer with 0.09 % (w/v) sodium azide and 2 % sucrose.

Preservative: Sodium azide

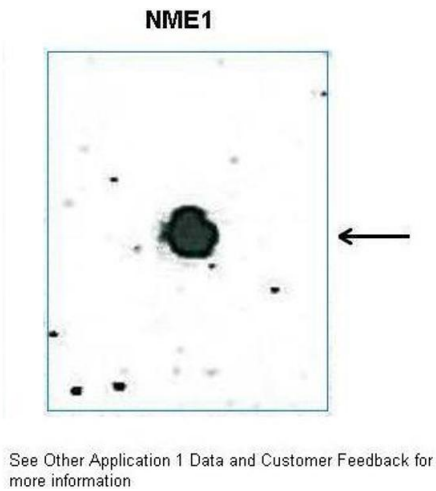
Precaution of Use: This product contains Sodium azide: a POISONOUS AND HAZARDOUS SUBSTANCE which should be handled by trained staff only.

Handling Advice: Avoid repeated freeze-thaw cycles.

Handling

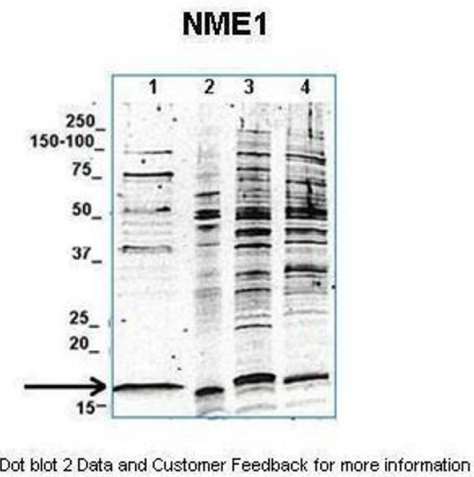
Storage:	-20 °C
Storage Comment:	For short term use, store at 2-8°C up to 1 week. For long term storage, store at -20°C in small aliquots to prevent freeze-thaw cycles.

Images



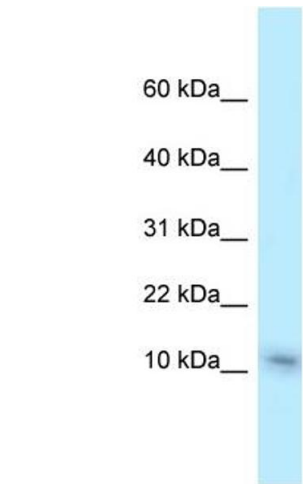
Dot Blot

**Image 1.** DB Suggested Anti-Nme1 antibody Titration: 0.5 ug/ml Positive Control: Recominant human NME2 protein



Western Blotting

**Image 2.** Lanes: 1. 20 ug human MDA-MB-231 cell lysate 2. 20 ug murine 4T1 primary breast tumor cell lysate 3. 20 ug human MDA-MB-231 cell lysate 4. 20 ug murine 4T1 primary breast tumor cell lysate Primary Antibody Dilution: 1:2000 Secondary Antibody: Goat anti-rabbit-Alexa Fluor 680 Secondary Antibody Dilution: 1:25,000 Gene Name: Nme1 Submitted by: Anonymous



Western Blotting

**Image 3.** WB Suggested Anti-Nme1 Antibody Titration: 1.0 ug/ml Positive Control: Mouse Liver