

Datasheet for ABIN2780440  
**anti-PBX2 antibody (N-Term)**

## 3 Images

[Go to Product page](#)

## Overview

Quantity:	100 µL
Target:	PBX2
Binding Specificity:	N-Term
Reactivity:	Human, Mouse, Rat, Guinea Pig, Dog, Horse, Cow, Rabbit
Host:	Rabbit
Clonality:	Polyclonal
Conjugate:	This PBX2 antibody is un-conjugated
Application:	Western Blotting (WB)

## Product Details

Immunogen:	The immunogen is a synthetic peptide directed towards the N terminal region of human PBX2
Sequence:	PGGGRGGLGL VSGEPGGPGE PPGGGDPGGG SGGVPGGRGK QDIGDILQQI
Predicted Reactivity:	Cow: 100%, Dog: 100%, Guinea Pig: 100%, Horse: 93%, Human: 100%, Mouse: 100%, Rabbit: 100%, Rat: 100%
Characteristics:	This is a rabbit polyclonal antibody against PBX2. It was validated on Western Blot using a cell lysate as a positive control.
Purification:	Affinity Purified

## Target Details

Target:	PBX2
---------	------

## Target Details

Alternative Name:	PBX2 ( <a href="#">PBX2 Products</a> )
Background:	<p>PBX2 is a ubiquitously expressed member of the TALE/PBX homeobox family. PBX2 gene was identified by its similarity to a homeobox gene which is involved in t(1,19) translocation in acute pre-B-cell leukemias. PBX2 is a transcriptional activator which binds to the TLX1 promoter. This gene encodes a ubiquitously expressed member of the TALE/PBX homeobox family. It was identified by its similarity to a homeobox gene which is involved in t(1,19) translocation in acute pre-B-cell leukemias. This protein is a transcriptional activator which binds to the TLX1 promoter. The gene is located within the major histocompatibility complex (MHC) on chromosome 6.</p> <p>Alias Symbols: G17, HOX12, PBX2MHC</p> <p>Protein Interaction Partner: CARD9, HOXA1, SOX2, ELAVL1, COPS6, ZDHHC7, SKIV2L2, SMYD3, MCERS1, CCDC88B, RPS6KC1, PBX2, PBX1, CENPBD1, DCTN3, NUP62, BAIAP2, IKBKAP, UBE2E1, PKN0X1, BLOC1S1, RPL4, HOXB8, HOXA9,</p> <p>Protein Size: 430</p>
Molecular Weight:	46 kDa
Gene ID:	5089
NCBI Accession:	<a href="#">NM_002586</a> , <a href="#">NP_002577</a>
UniProt:	<a href="#">P40425</a>
Pathways:	<a href="#">Skeletal Muscle Fiber Development</a>

## Application Details

Application Notes:	Optimal working dilutions should be determined experimentally by the investigator.
Comment:	Antigen size: 430 AA
Restrictions:	For Research Use only

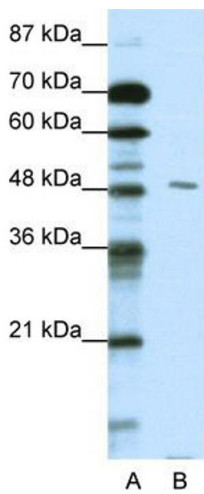
## Handling

Format:	Liquid
Concentration:	Lot specific
Buffer:	Liquid. Purified antibody supplied in 1x PBS buffer with 0.09 % (w/v) sodium azide and 2 % sucrose.
Preservative:	Sodium azide

Handling

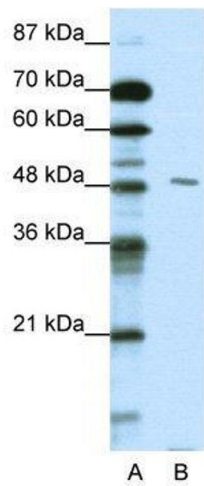
Precaution of Use:	This product contains Sodium azide: a POISONOUS AND HAZARDOUS SUBSTANCE which should be handled by trained staff only.
Handling Advice:	Avoid repeated freeze-thaw cycles.
Storage:	-20 °C
Storage Comment:	For short term use, store at 2-8°C up to 1 week. For long term storage, store at -20°C in small aliquots to prevent freeze-thaw cycles.

Images



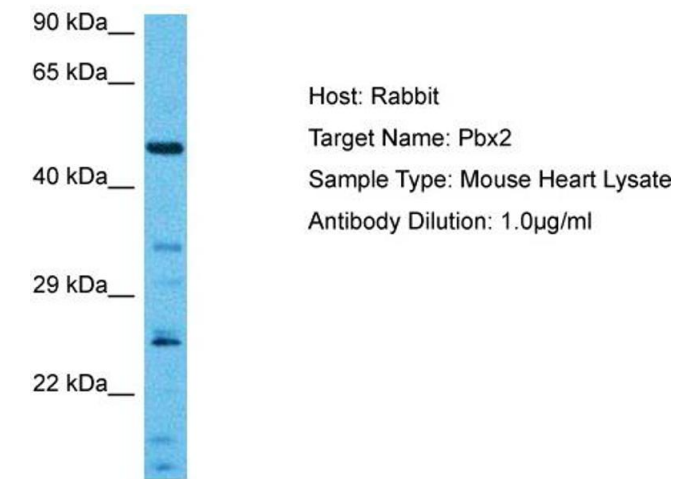
Western Blotting

**Image 1.** WB Suggested Anti-PBX2 Antibody Titration: 0.2-1 ug/ml ELISA Titer: 1:312500 Positive Control: HepG2 cell lysate There is BioGPS gene expression data showing that PBX2 is expressed in HepG2



Western Blotting

**Image 2.** WB Suggested Anti-PBX2 Antibody Titration: 0.2-1 µg/mL ELISA Titer: 1:12500 Positive Control: HepG2 cell lysate There is BioGPS gene expression data showing that PBX2 is expressed in HepG2



Western Blotting

**Image 3.** Host: Mouse Target Name: PBX2 Sample Tissue: Mouse Heart Antibody Dilution: 1ug/ml