



[Go to Product page](#)

Datasheet for ABIN2780441
anti-PBX2 antibody (C-Term)

2 Images

Overview

Quantity:	100 µL
Target:	PBX2
Binding Specificity:	C-Term
Reactivity:	Human, Mouse, Rat, Guinea Pig, Dog, Horse, Cow, Rabbit, Zebrafish (Danio rerio)
Host:	Rabbit
Clonality:	Polyclonal
Conjugate:	This PBX2 antibody is un-conjugated
Application:	Western Blotting (WB)

Product Details

Immunogen:	The immunogen is a synthetic peptide directed towards the C terminal region of human PBX2
Sequence:	PGGYGDNLGG GQMYSPREMR ANGSWQEAVT PSSVTSPTTEG PGSVHSDTSN
Predicted Reactivity:	Cow: 100%, Dog: 100%, Guinea Pig: 100%, Horse: 100%, Human: 100%, Mouse: 100%, Rabbit: 100%, Rat: 100%, Zebrafish: 100%
Characteristics:	This is a rabbit polyclonal antibody against PBX2. It was validated on Western Blot using a cell lysate as a positive control.
Purification:	Protein A purified

Target Details

Target:	PBX2
---------	------

Target Details

Alternative Name: [PBX2 \(PBX2 Products\)](#)

Background: PBX2 is a ubiquitously expressed member of the TALE/PBX homeobox family. PBX2 gene was identified by its similarity to a homeobox gene which is involved in t(1,19) translocation in acute pre-B-cell leukemias. PBX2 is a transcriptional activator which binds to the TLX1 promoter. This gene encodes a ubiquitously expressed member of the TALE/PBX homeobox family. It was identified by its similarity to a homeobox gene which is involved in t(1,19) translocation in acute pre-B-cell leukemias. This protein is a transcriptional activator which binds to the TLX1 promoter. The gene is located within the major histocompatibility complex (MHC) on chromosome 6.

Alias Symbols: G17, HOX12, PBX2MHC

Protein Interaction Partner: CARD9, HOXA1, SOX2, ELAVL1, COPS6, ZDHHC7, SKIV2L2, SMYD3, MCRS1, CCDC88B, RPS6KC1, PBX2, PBX1, CENPBD1, DCTN3, NUP62, BAIAP2, IKBKAP, UBE2E1, PKNOX1, BLOC1S1, RPL4, HOXB8, HOXA9,

Protein Size: 430

Molecular Weight: 46 kDa

Gene ID: 5089

NCBI Accession: [NM_002586](#), [NP_002577](#)

UniProt: [P40425](#)

Pathways: [Skeletal Muscle Fiber Development](#)

Application Details

Application Notes: Optimal working dilutions should be determined experimentally by the investigator.

Comment: Antigen size: 430 AA

Restrictions: For Research Use only

Handling

Format: Liquid

Concentration: Lot specific

Buffer: Liquid. Purified antibody supplied in 1x PBS buffer with 0.09 % (w/v) sodium azide and 2 % sucrose.

Preservative: Sodium azide

Handling

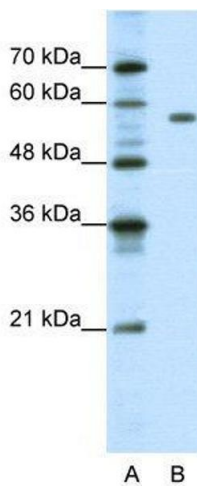
Precaution of Use:	This product contains Sodium azide: a POISONOUS AND HAZARDOUS SUBSTANCE which should be handled by trained staff only.
Handling Advice:	Avoid repeated freeze-thaw cycles.
Storage:	-20 °C
Storage Comment:	For short term use, store at 2-8°C up to 1 week. For long term storage, store at -20°C in small aliquots to prevent freeze-thaw cycles.

Images



Western Blotting

Image 1. WB Suggested Anti-PBX2 Antibody Titration: 1.25ug/ml ELISA Titer: 1:62500 Positive Control: Jurkat cell lysate PBX2 is supported by BioGPS gene expression data to be expressed in Jurkat



Western Blotting

Image 2. WB Suggested Anti-PBX2 Antibody Titration: 1.25 µg/mL ELISA Titer: 1:62500 Positive Control: Jurkat cell lysate PBX2 is supported by BioGPS gene expression data to be expressed in Jurkat