

Datasheet for ABIN2780442
anti-PITX1 antibody (C-Term)[Go to Product page](#)

2 Images

Overview

Quantity:	100 µL
Target:	PITX1
Binding Specificity:	C-Term
Reactivity:	Human, Rat, Mouse, Cow, Guinea Pig, Dog, Horse, Zebrafish (Danio rerio)
Host:	Rabbit
Clonality:	Polyclonal
Conjugate:	This PITX1 antibody is un-conjugated
Application:	Western Blotting (WB)

Product Details

Immunogen:	The immunogen is a synthetic peptide directed towards the C terminal region of human PITX1
Sequence:	GTPASPYSVY RDTCNSSLAS LRLKSKQHSS FGYGGLQGPA SGLNACQYNS
Predicted Reactivity:	Cow: 93%, Dog: 93%, Guinea Pig: 93%, Horse: 93%, Human: 93%, Mouse: 93%, Rat: 93%, Zebrafish: 79%
Characteristics:	This is a rabbit polyclonal antibody against PITX1. It was validated on Western Blot using a cell lysate as a positive control.
Purification:	Protein A purified

Target Details

Target:	PITX1
---------	-------

Target Details

Alternative Name:	PITX1 (PITX1 Products)
Background:	<p>PITX1 is a member of the RIEG/PITX homeobox family, which is involved in organ development and left-right asymmetry. This protein acts as a transcriptional regulator involved in basal and hormone-regulated activity of prolactin.</p> <p>Alias Symbols: BFT, CCF, POTX, PTX1</p> <p>Protein Interaction Partner: RBPMS, RFX6, MGAT5B, PRR20A, C1orf94, LZTS2, ALG13, RNF31, ZBTB32, SPAG8, IPO13, MAGED1, HGS, PLSCR1, CDX4, TRIM23, UPF2, SMAD3, SMARCA2, NEUROD1, DVL3, RHOXF2, NR5A1, POU1F1, EGR1, RASAL1,</p> <p>Protein Size: 314</p>
Molecular Weight:	34 kDa
Gene ID:	5307
NCBI Accession:	NM_002653 , NP_002644
UniProt:	P78337

Application Details

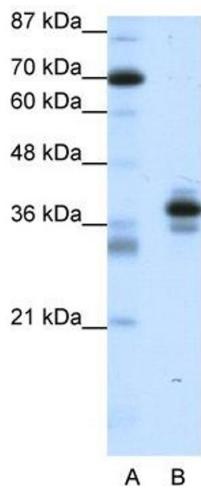
Application Notes:	Optimal working dilutions should be determined experimentally by the investigator.
Comment:	Antigen size: 314 AA
Restrictions:	For Research Use only

Handling

Format:	Liquid
Concentration:	Lot specific
Buffer:	Liquid. Purified antibody supplied in 1x PBS buffer with 0.09 % (w/v) sodium azide and 2 % sucrose.
Preservative:	Sodium azide
Precaution of Use:	This product contains Sodium azide: a POISONOUS AND HAZARDOUS SUBSTANCE which should be handled by trained staff only.
Handling Advice:	Avoid repeated freeze-thaw cycles.
Storage:	-20 °C
Storage Comment:	For short term use, store at 2-8°C up to 1 week. For long term storage, store at -20°C in small

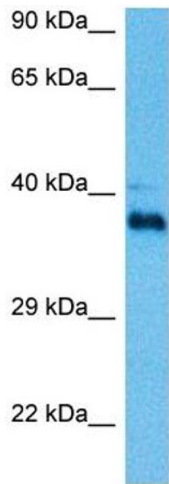
aliquots to prevent freeze-thaw cycles.

Images



Western Blotting

Image 1. WB Suggested Anti-PITX1 Antibody Titration: 1.25ug/ml ELISA Titer: 1:1562500 Positive Control: Jurkat cell lysate



Western Blotting

Image 2. Host: Mouse Target Name: PITX1 Sample Tissue: Mouse Spleen Antibody Dilution: 1ug/ml