

Datasheet for ABIN2780443
anti-PLAG1 antibody (N-Term)[Go to Product page](#)

2 Images

Overview

Quantity:	100 µL
Target:	PLAG1
Binding Specificity:	N-Term
Reactivity:	Human, Mouse, Rat, Guinea Pig, Rabbit, Dog, Horse, Cow
Host:	Rabbit
Clonality:	Polyclonal
Conjugate:	This PLAG1 antibody is un-conjugated
Application:	Western Blotting (WB)

Product Details

Immunogen:	The immunogen is a synthetic peptide directed towards the N terminal region of human PLAG1
Sequence:	MATVIPGDLSEVRDTQKVPSGKRKRGETKPKKNFPCQLCDKAFNSVEKLK
Predicted Reactivity:	Cow: 100%, Dog: 100%, Guinea Pig: 100%, Horse: 100%, Human: 100%, Mouse: 93%, Rabbit: 100%, Rat: 100%
Characteristics:	This is a rabbit polyclonal antibody against PLAG1. It was validated on Western Blot using a cell lysate as a positive control.
Purification:	Affinity Purified

Target Details

Target:	PLAG1
---------	-------

Target Details

Alternative Name:	PLAG1 (PLAG1 Products)
Background:	<p>PLAG1 is a zinc finger protein with 2 putative nuclear localization signals. PLAG1, which is developmentally regulated, has been shown to be consistently rearranged in pleomorphic adenomas of the salivary glands. PLAG1 is activated by the reciprocal chromosomal translocations involving 8q12 in a subset of salivary gland pleomorphic adenomas. Pleomorphic adenoma gene 1 encodes a zinc finger protein with 2 putative nuclear localization signals. PLAG1, which is developmentally regulated, has been shown to be consistently rearranged in pleomorphic adenomas of the salivary glands. PLAG1 is activated by the reciprocal chromosomal translocations involving 8q12 in a subset of salivary gland pleomorphic adenomas. Three transcript variants encoding two different isoforms have been found for this gene.</p> <p>Alias Symbols: PSA, SGPA, ZNF912</p> <p>Protein Interaction Partner: SMAD3, ALB, PIAS4, PIAS2, PIAS1, SUMO1, KPNA2,</p> <p>Protein Size: 500</p>
Molecular Weight:	56 kDa
Gene ID:	5324
NCBI Accession:	NM_002655 , NP_002646
UniProt:	Q6DJT9

Application Details

Application Notes:	Optimal working dilutions should be determined experimentally by the investigator.
Comment:	Antigen size: 500 AA
Restrictions:	For Research Use only

Handling

Format:	Liquid
Concentration:	Lot specific
Buffer:	Liquid. Purified antibody supplied in 1x PBS buffer with 0.09 % (w/v) sodium azide and 2 % sucrose.
Preservative:	Sodium azide
Precaution of Use:	This product contains Sodium azide: a POISONOUS AND HAZARDOUS SUBSTANCE which

Handling

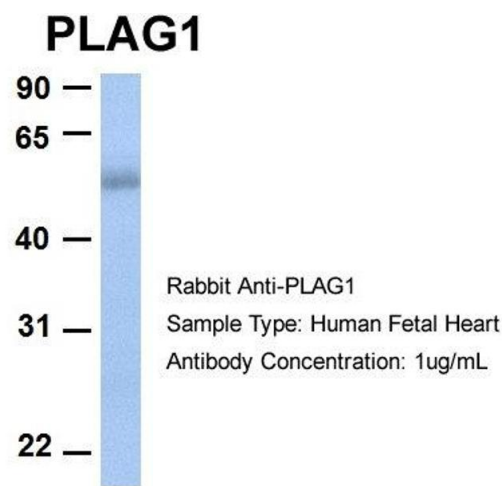
	should be handled by trained staff only.
Handling Advice:	Avoid repeated freeze-thaw cycles.
Storage:	-20 °C
Storage Comment:	For short term use, store at 2-8°C up to 1 week. For long term storage, store at -20°C in small aliquots to prevent freeze-thaw cycles.

Images



Western Blotting

Image 1. WB Suggested Anti-PLAG1 Antibody Titration: 0.2-1 ug/ml Positive Control: Hela cell lysate



Western Blotting

Image 2. Host: Rabbit Target Name: PLAG1 Sample Type: Human Fetal Heart Antibody Dilution: 1.0ug/ml