

Datasheet for ABIN2780444
anti-PLAG1 antibody (C-Term)[Go to Product page](#)

3 Images

Overview

Quantity:	100 µL
Target:	PLAG1
Binding Specificity:	C-Term
Reactivity:	Human, Mouse, Rat, Guinea Pig, Rabbit, Dog, Horse
Host:	Rabbit
Clonality:	Polyclonal
Conjugate:	This PLAG1 antibody is un-conjugated
Application:	Western Blotting (WB)

Product Details

Immunogen:	The immunogen is a synthetic peptide directed towards the C terminal region of human PLAG1
Sequence:	SSVSQPPQT QDLQDPANTI GLGSLHSLSA AFTSSLSTST TLPRFHQAFQ
Predicted Reactivity:	Dog: 93%, Guinea Pig: 100%, Horse: 93%, Human: 100%, Mouse: 100%, Rabbit: 86%, Rat: 100%
Characteristics:	This is a rabbit polyclonal antibody against PLAG1. It was validated on Western Blot using a cell lysate as a positive control.
Purification:	Affinity Purified

Target Details

Target:	PLAG1
Alternative Name:	PLAG1 (PLAG1 Products)

Target Details

Background:	<p>PLAG1 is a zinc finger protein with 2 putative nuclear localization signals. PLAG1, which is developmentally regulated, has been shown to be consistently rearranged in pleomorphic adenomas of the salivary glands. PLAG1 is activated by the reciprocal chromosomal translocations involving 8q12 in a subset of salivary gland pleomorphic adenomas.</p> <p>Pleomorphic adenoma gene 1 encodes a zinc finger protein with 2 putative nuclear localization signals. PLAG1, which is developmentally regulated, has been shown to be consistently rearranged in pleomorphic adenomas of the salivary glands. PLAG1 is activated by the reciprocal chromosomal translocations involving 8q12 in a subset of salivary gland pleomorphic adenomas. Three transcript variants encoding two different isoforms have been found for this gene.</p> <p>Alias Symbols: SGPA, ZNF912</p> <p>Protein Interaction Partner: SMAD3, ALB, PIAS4, PIAS2, PIAS1, SUMO1, KPNA2,</p> <p>Protein Size: 500</p>
-------------	---

Molecular Weight:	56 kDa
-------------------	--------

Gene ID:	5324
----------	------

NCBI Accession:	NM_002655 , NP_002646
-----------------	---

UniProt:	Q6DJT9
----------	------------------------

Application Details

Application Notes:	Optimal working dilutions should be determined experimentally by the investigator.
--------------------	--

Comment:	Antigen size: 500 AA
----------	----------------------

Restrictions:	For Research Use only
---------------	-----------------------

Handling

Format:	Liquid
---------	--------

Concentration:	Lot specific
----------------	--------------

Buffer:	Liquid. Purified antibody supplied in 1x PBS buffer with 0.09 % (w/v) sodium azide and 2 % sucrose.
---------	---

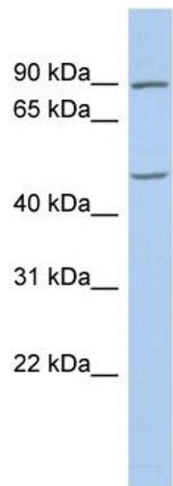
Preservative:	Sodium azide
---------------	--------------

Precaution of Use:	This product contains Sodium azide: a POISONOUS AND HAZARDOUS SUBSTANCE which should be handled by trained staff only.
--------------------	--

Handling

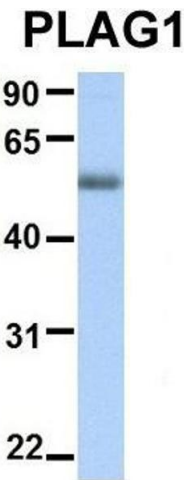
Handling Advice:	Avoid repeated freeze-thaw cycles.
Storage:	-20 °C
Storage Comment:	For short term use, store at 2-8°C up to 1 week. For long term storage, store at -20°C in small aliquots to prevent freeze-thaw cycles.

Images



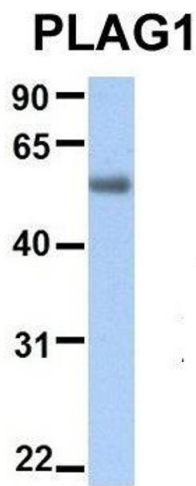
Western Blotting

Image 1. WB Suggested Anti-PLAG1 Antibody Titration: 0.2-1 ug/ml ELISA Titer: 1:312500 Positive Control: OVCAR-3 cell lysate



Western Blotting

Image 2. Host: Rabbit Target Name: PLAG1 Sample Type: Human Fetal Muscle Antibody Dilution: 1.0ug/ml



Western Blotting

Image 3. Host: Rabbit Target Name: PLAG1 Sample Type:
Human Fetal Lung Antibody Dilution: 1.0ug/ml