

Datasheet for ABIN2780455
anti-RING1 antibody (N-Term)



[Go to Product page](#)

2 Images

Overview

Quantity:	100 µL
Target:	RING1
Binding Specificity:	N-Term
Reactivity:	Human, Mouse, Rat, Dog, Cow, Guinea Pig, Horse
Host:	Rabbit
Clonality:	Polyclonal
Conjugate:	This RING1 antibody is un-conjugated
Application:	Western Blotting (WB)

Product Details

Immunogen:	The immunogen is a synthetic peptide directed towards the N terminal region of human RING1
Sequence:	MTTPANAQNA SKTWELSLYE LH RTPQEAIM DGTEIAVSPR SLHSELMCP I
Predicted Reactivity:	Cow: 100%, Dog: 100%, Guinea Pig: 100%, Horse: 100%, Human: 100%, Mouse: 100%, Rat: 100%
Characteristics:	This is a rabbit polyclonal antibody against RING1. It was validated on Western Blot using a cell lysate as a positive control.
Purification:	Protein A purified

Target Details

Target:	RING1
Alternative Name:	RING1 (RING1 Products)

Target Details

Background:	<p>RING1 can bind DNA and can act as a transcriptional repressor. It is associated with the multimeric polycomb group protein complex. The gene product interacts with the polycomb group proteins BMI1, EDR1, and CBX4, and colocalizes with these proteins in la</p> <p>Alias Symbols: RNF1, RING1A</p> <p>Protein Interaction Partner: CBX8, RYBP, YAF2, BMI1, UBC, SNAI1, EED, RNF2, HECW2, CSNK2A2, YY1, FBXO38, CBX7, CBX6, FHL1, TP53, NOTCH1, APP, PCGF1, PCGF5, PCGF6, PCGF3, PCGF2, CBX2, PHC3, WDR5, CBX4, PHC2, PHC1, YY2, ZFP42, SMARCAD1, PIK3R3, TOP2A, TERF2, TERF1, USP11, USP7, CENPA,</p> <p>Protein Size: 406</p>
Molecular Weight:	42 kDa
Gene ID:	6015
NCBI Accession:	NM_002931 , NP_002922
UniProt:	Q06587

Application Details

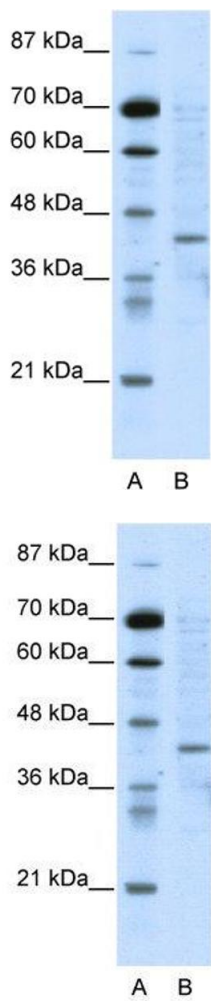
Application Notes:	Optimal working dilutions should be determined experimentally by the investigator.
Comment:	Antigen size: 406 AA
Restrictions:	For Research Use only

Handling

Format:	Liquid
Concentration:	Lot specific
Buffer:	Liquid. Purified antibody supplied in 1x PBS buffer with 0.09 % (w/v) sodium azide and 2 % sucrose.
Preservative:	Sodium azide
Precaution of Use:	This product contains Sodium azide: a POISONOUS AND HAZARDOUS SUBSTANCE which should be handled by trained staff only.
Handling Advice:	Avoid repeated freeze-thaw cycles.
Storage:	-20 °C
Storage Comment:	For short term use, store at 2-8°C up to 1 week. For long term storage, store at -20°C in small

aliquots to prevent freeze-thaw cycles.

Images



Western Blotting

Image 1. WB Suggested Anti-RING1 Antibody Titration: 5.0ug/ml ELISA Titer: 1:62500 Positive Control: HepG2 cell lysate RING1 is supported by BioGPS gene expression data to be expressed in HepG2

Western Blotting

Image 2. WB Suggested Anti-RING1 Antibody Titration: 5.0 µg/mL ELISA Titer: 1:2500 Positive Control: HepG2 cell lysate RING1 is supported by BioGPS gene expression data to be expressed in HepG2