

Datasheet for ABIN2780457

anti-SATB1 antibody (C-Term)**3** Images**1** Publication[Go to Product page](#)

Overview

Quantity:	100 µL
Target:	SATB1
Binding Specificity:	C-Term
Reactivity:	Human, Mouse, Rat, Rabbit, Guinea Pig, Horse
Host:	Rabbit
Clonality:	Polyclonal
Conjugate:	This SATB1 antibody is un-conjugated
Application:	Western Blotting (WB)

Product Details

Immunogen:	The immunogen is a synthetic peptide directed towards the C terminal region of human SATB1
Sequence:	VDVAEYKEEE LLKDLEESVQ DKNTNTLFSV KLEEELSVEG NTDINTDLKD
Predicted Reactivity:	Guinea Pig: 86%, Horse: 93%, Human: 100%, Mouse: 79%, Rabbit: 86%, Rat: 93%
Characteristics:	This is a rabbit polyclonal antibody against SATB1. It was validated on Western Blot using a cell lysate as a positive control.
Purification:	Protein A purified

Target Details

Target:	SATB1
Alternative Name:	SATB1 (SATB1 Products)

Target Details

Background:	SATB1 binds to DNA at special AT-rich sequences at nuclear matrix- or scaffold-associated regions. SATB1 was thought to recognize the sugar-phosphate structure of double-stranded DNA Protein Interaction Partner: SUMO1P1, UBE2I, SUMO1, SUMO3, PML, CASP6, PIAS4, PIAS3, TOPORS, PIAS1, CBX4, SIRT1, UBC, CTNNB1, UBR5, tat, TAL1, HDAC1, DYT10, KAT2B, CTBP1, POLR2J, BAZ1A, CHD3, MTA2, SMARCA5, EP300, SATB1, GATA3, CUX1, SIN3A, HDAC2, CHD4, Protein Size: 763
Molecular Weight:	86 kDa
Gene ID:	6304
NCBI Accession:	NM_002971 , NP_002962
UniProt:	Q01826
Pathways:	Caspase Cascade in Apoptosis, Activated T Cell Proliferation

Application Details

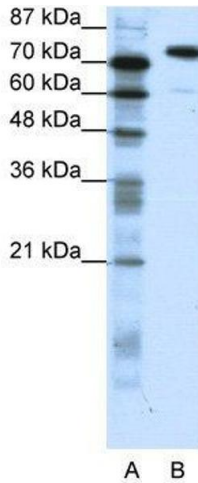
Application Notes:	Optimal working dilutions should be determined experimentally by the investigator.
Comment:	Antigen size: 763 AA
Restrictions:	For Research Use only

Handling

Format:	Liquid
Concentration:	Lot specific
Buffer:	Liquid. Purified antibody supplied in 1x PBS buffer with 0.09 % (w/v) sodium azide and 2 % sucrose.
Preservative:	Sodium azide
Precaution of Use:	This product contains Sodium azide: a POISONOUS AND HAZARDOUS SUBSTANCE which should be handled by trained staff only.
Handling Advice:	Avoid repeated freeze-thaw cycles.
Storage:	-20 °C
Storage Comment:	For short term use, store at 2-8°C up to 1 week. For long term storage, store at -20°C in small aliquots to prevent freeze-thaw cycles.

Product cited in: Green, Roeder: "Definition of a novel promoter for the major adenovirus-associated virus mRNA." in: **Cell**, Vol. 22, Issue 1 Pt 1, pp. 231-42, (1981) ([PubMed](#)).

Images



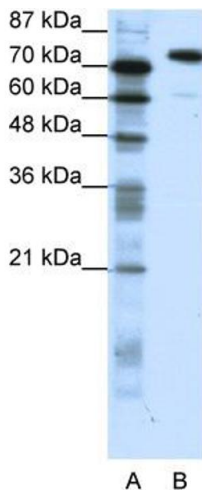
Western Blotting

Image 1. WB Suggested Anti-SATB1

Antibody Titration: 1.25 µg/mL ELISA Titer: 1:312500

Positive Control: Jurkat cell lysate

SATB1 is supported by BioGPS gene expression data to be expressed in Jurkat



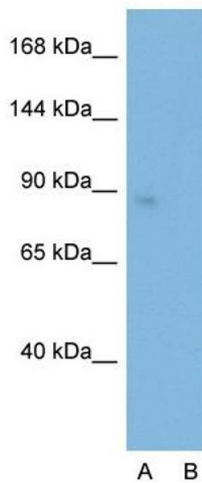
Western Blotting

Image 2. WB Suggested Anti-SATB1 Antibody Titration:

1.25ug/ml ELISA Titer: 1:312500 Positive Control: Jurkat cell

lysate SATB1 is supported by BioGPS gene expression data

to be expressed in Jurkat



Western Blotting

Image 3. Host: Rabbit Target Name: SATB1 Sample Type:

Jurkat Lane A: Primary Antibody Lane B: Primary Antibody +

Blocking Peptide Primary Antibody Concentration:

0.625ug/mL Peptide Concentration: 1.0ug/mL Lysate

Quantity: 25ug/lane Gel Concentration: 6%-18% SATB1 is

supported by BioGPS gene expression data to be expressed

in Jurkat