

Datasheet for ABIN2780458
anti-Ataxin 2 antibody (Middle Region)[Go to Product page](#)

2 Images

Overview

Quantity:	100 µL
Target:	Ataxin 2 (ATXN2)
Binding Specificity:	Middle Region
Reactivity:	Human, Mouse, Rat, Cow, Dog, Horse, Guinea Pig, Rabbit
Host:	Rabbit
Clonality:	Polyclonal
Conjugate:	This Ataxin 2 antibody is un-conjugated
Application:	Western Blotting (WB), Immunohistochemistry (IHC)

Product Details

Immunogen:	The immunogen is a synthetic peptide directed towards the middle region of human ATXN2
Sequence:	HAPMMLMTTQ PPGGPQAALA QSALQPIPV TTAHFPYMT HPSVQAHHQQQ
Predicted Reactivity:	Cow: 100%, Dog: 100%, Guinea Pig: 100%, Horse: 100%, Human: 100%, Mouse: 100%, Rabbit: 93%, Rat: 100%
Characteristics:	This is a rabbit polyclonal antibody against ATXN2. It was validated on Western Blot using a cell lysate as a positive control.
Purification:	Affinity Purified

Target Details

Target:	Ataxin 2 (ATXN2)
---------	------------------

Target Details

Alternative Name:	ATXN2 (ATXN2 Products)
Background:	<p>The autosomal dominant cerebellar ataxias (ADCA) are a heterogeneous group of neurodegenerative disorders characterized by progressive degeneration of the cerebellum, brain stem and spinal cord. Clinically, ADCA has been divided into three groups: ADCA ty</p> <p>Alias Symbols: ATX2, FLJ46772, SCA2, TNRC13</p> <p>Protein Interaction Partner: UBC, SUMO1, NEDD8, DDX6, WWOX, SH3GL3, SH3GL2, SHFM1, BMI1, PABPC1, Dlg4, MDC1, GPKOW, CCT5, SUMO2, PARK2, GOLGA6L5P, RBFOX1, ZNRD1, KIAA1279, TDRD7, GFI1B, NCOA4, BAG6, ATXN1, IDH3B, ACTN2, ACTN1, CAND1, CUL3, ISG15, SH3KBP1, TSG101, EGFR, CHGB, BIN1, PL</p> <p>Protein Size: 1313</p>
Molecular Weight:	140 kDa
Gene ID:	6311
NCBI Accession:	NM_002973 , NP_002964
UniProt:	Q99700
Pathways:	Ribonucleoprotein Complex Subunit Organization

Application Details

Application Notes:	Optimal working dilutions should be determined experimentally by the investigator.
Comment:	Antigen size: 1313 AA
Restrictions:	For Research Use only

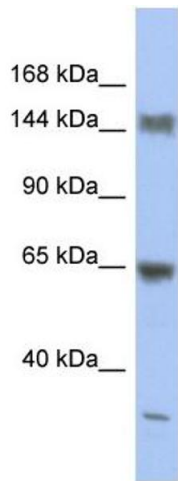
Handling

Format:	Liquid
Concentration:	Lot specific
Buffer:	Liquid. Purified antibody supplied in 1x PBS buffer with 0.09 % (w/v) sodium azide and 2 % sucrose.
Preservative:	Sodium azide
Precaution of Use:	This product contains Sodium azide: a POISONOUS AND HAZARDOUS SUBSTANCE which should be handled by trained staff only.
Handling Advice:	Avoid repeated freeze-thaw cycles.

Handling

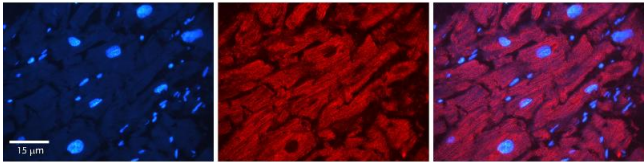
Storage:	-20 °C
Storage Comment:	For short term use, store at 2-8°C up to 1 week. For long term storage, store at -20°C in small aliquots to prevent freeze-thaw cycles.

Images



Western Blotting

Image 1. WB Suggested Anti-ATXN2 Antibody Titration: 0.2-1 ug/ml ELISA Titer: 1:312500 Positive Control: PANC1 cell lysate



Immunohistochemistry

Image 2. Rabbit Anti-ATXN2 Antibody Formalin Fixed Paraffin Embedded Tissue: Human heart Tissue Observed Staining: Cytoplasmic Primary Antibody Concentration: N/A Other Working Concentrations: 1:600 Secondary Antibody: Donkey anti-Rabbit-Cy3 Secondary Antibody Concentration: 1:200 Magnification: 20X Exposure Time: 0.5 - 2.0 sec