

Datasheet for ABIN2780459
anti-SIAH1 antibody (C-Term)

3 Images

[Go to Product page](#)

Overview

Quantity:	100 µL
Target:	SIAH1
Binding Specificity:	C-Term
Reactivity:	Human, Mouse, Rat, Dog, Cow, Zebrafish (Danio rerio), Horse, Guinea Pig, Rabbit
Host:	Rabbit
Clonality:	Polyclonal
Conjugate:	This SIAH1 antibody is un-conjugated
Application:	Western Blotting (WB), Immunohistochemistry (IHC)

Product Details

Immunogen:	The immunogen is a synthetic peptide directed towards the C terminal region of human SIAH1
Sequence:	LVLEKQEKYD GHQOFFAIVQ LIGTRKQAEN FAYRLELNGH RRRLTWEATP
Predicted Reactivity:	Cow: 100%, Dog: 100%, Guinea Pig: 100%, Horse: 100%, Human: 100%, Mouse: 100%, Rabbit: 100%, Rat: 100%, Zebrafish: 100%
Characteristics:	This is a rabbit polyclonal antibody against SIAH1. It was validated on Western Blot using a cell lysate as a positive control.
Purification:	Protein A purified

Target Details

Target:	SIAH1
---------	-------

Target Details

Alternative Name: SIAH1 ([SIAH1 Products](#))

Background: SIAH1 is a protein that is a member of the seven in absentia homolog (SIAH) family. The protein is an E3 ligase and is involved in ubiquitination and proteasome-mediated degradation of specific proteins. The activity of this ubiquitin ligase has been implicated in the development of certain forms of Parkinson's disease, the regulation of the cellular response to hypoxia and induction of apoptosis. Alternative splicing results in several additional transcript variants, some encoding different isoforms and others that have not been fully characterized. This gene encodes a protein that is a member of the seven in absentia homolog (SIAH) family. The protein is an E3 ligase and is involved in ubiquitination and proteasome-mediated degradation of specific proteins. The activity of this ubiquitin ligase has been implicated in the development of certain forms of Parkinson's disease, the regulation of the cellular response to hypoxia and induction of apoptosis. Alternative splicing results in several additional transcript variants, some encoding different isoforms and others that have not been fully characterized.

Alias Symbols: SIAH1A

Protein Interaction Partner: MX1, MAB21L1, KIFC3, KCNJ10, INHA, UBE2K, FLI1, EEF1D, PHC2, PHC1, CDC34, CAPG, BCL6, TRIM23, AQP1, PFKM, ZCCHC13, MTIF3, UPP2, MOB3C, SPATA4, PRR20A, HIST4H4, EXOC3-AS1, PTPMT1, RPS19BP1, SPATC1L, KATNAL1, TRIM7, GDPD5, ZBP1, KIAA1683, ARMC9, KIAA0319L,

Protein Size: 282

Molecular Weight: 31 kDa

Gene ID: 6477

NCBI Accession: [NM_003031](#), [NP_003022](#)

UniProt: [Q8IUQ4](#)

Application Details

Application Notes: Optimal working dilutions should be determined experimentally by the investigator.

Comment: Antigen size: 282 AA

Restrictions: For Research Use only

Handling

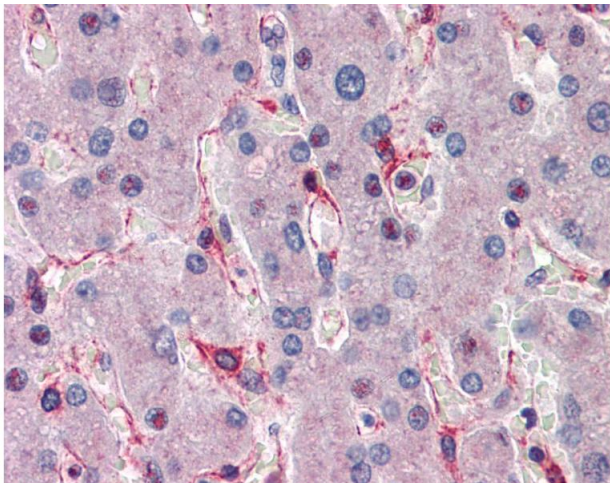
Format: Liquid

Concentration: Lot specific

Handling

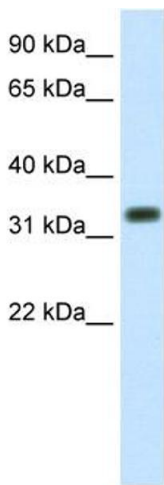
Buffer:	Liquid. Purified antibody supplied in 1x PBS buffer with 0.09 % (w/v) sodium azide and 2 % sucrose.
Preservative:	Sodium azide
Precaution of Use:	This product contains Sodium azide: a POISONOUS AND HAZARDOUS SUBSTANCE which should be handled by trained staff only.
Handling Advice:	Avoid repeated freeze-thaw cycles.
Storage:	-20 °C
Storage Comment:	For short term use, store at 2-8°C up to 1 week. For long term storage, store at -20°C in small aliquots to prevent freeze-thaw cycles.

Images



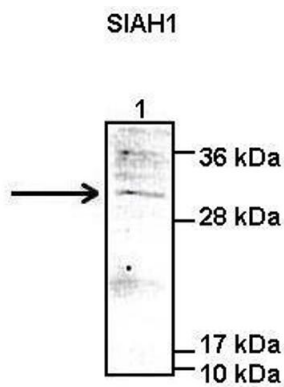
Immunohistochemistry

Image 1.



Western Blotting

Image 2. WB Suggested Anti-SIAH1 Antibody Titration: 1.25ug/ml ELISA Titer: 1:312500 Positive Control: Human Placenta



See Immunoblot 2 Data and Customer Feedback for more information

Western Blotting

Image 3. Lanes: Lane1: 50 ug human HEK-293T lysate
Primary Antibody Dilution: 1:1000 Secondary Antibody: Anti-rabbit-IgG Secondary Antibody Dilution: 1:5000 Gene Name: SIAH1 Submitted by: Peter Brand & Dr. Oliver Kramer, Institute for Biochemistry and Biophysics, Center for Molecular Biomedicine, Friedrich-Schiller University Jena
SIAH1 is strongly supported by BioGPS gene expression data to be expressed in Human HEK293T cells