

Datasheet for ABIN2780464
anti-SMARCD2 antibody (C-Term)[Go to Product page](#)

4 Images

Overview

Quantity:	100 µL
Target:	SMARCD2
Binding Specificity:	C-Term
Reactivity:	Human, Mouse, Rat, Dog, Cow, Horse, Guinea Pig, Rabbit, Zebrafish (Danio rerio)
Host:	Rabbit
Clonality:	Polyclonal
Conjugate:	This SMARCD2 antibody is un-conjugated
Application:	Western Blotting (WB), Immunohistochemistry (IHC)

Product Details

Immunogen:	The immunogen is a synthetic peptide directed towards the C terminal region of human SMARCD2
Sequence:	STDPQDFIQE WLRSQRRDLK IITDVIGNPE EERRAAFYHQ PWAQEAVGRH
Predicted Reactivity:	Cow: 100%, Dog: 100%, Guinea Pig: 100%, Horse: 100%, Human: 100%, Mouse: 100%, Rabbit: 100%, Rat: 100%, Zebrafish: 93%
Characteristics:	This is a rabbit polyclonal antibody against SMARCD2. It was validated on Western Blot and immunohistochemistry.
Purification:	Affinity Purified

Target Details

Target:	SMARCD2
---------	---------

Target Details

Alternative Name:	SMARCD2 (SMARCD2 Products)
Background:	<p>SMARCD2 is a member of the SWI/SNF family of proteins, whose members display helicase and ATPase activities and which are thought to regulate transcription of certain genes by altering the chromatin structure around those genes. The protein is part of the large ATP-dependent chromatin remodeling complex SNF/SWI and has sequence similarity to the yeast Swp73 protein. The protein encoded by this gene is a member of the SWI/SNF family of proteins, whose members display helicase and ATPase activities and which are thought to regulate transcription of certain genes by altering the chromatin structure around those genes. The encoded protein is part of the large ATP-dependent chromatin remodeling complex SNF/SWI and has sequence similarity to the yeast Swp73 protein.</p> <p>Alias Symbols: BAF60B, CRACD2, PRO2451, Rsc6p</p> <p>Protein Interaction Partner: NOTCH2NL, UBC, RNF2, BMI1, RBBP5, NUDCD2, SIRT1, BAZ1B, KYNU, ARID1A, TOP2B, SMARCE1, SMARCD1, SMARCC2, SMARCC1, SMARCB1, SMARCA4, SMARCA2, BPTF, CUL3, SMARCA1, Bcl7b, UNKL, TP63, TP73, TP53, XRN1, BRCA1,</p> <p>Protein Size: 475</p>
Molecular Weight:	54 kDa
Gene ID:	6603
NCBI Accession:	NM_003077 , NP_003068

Application Details

Application Notes:	Optimal working dilutions should be determined experimentally by the investigator.
Comment:	Antigen size: 475 AA
Restrictions:	For Research Use only

Handling

Format:	Liquid
Concentration:	Lot specific
Buffer:	Liquid. Purified antibody supplied in 1x PBS buffer with 0.09 % (w/v) sodium azide and 2 % sucrose.
Preservative:	Sodium azide
Precaution of Use:	This product contains Sodium azide: a POISONOUS AND HAZARDOUS SUBSTANCE which

Handling

should be handled by trained staff only.

Handling Advice: Avoid repeated freeze-thaw cycles.

Storage: -20 °C

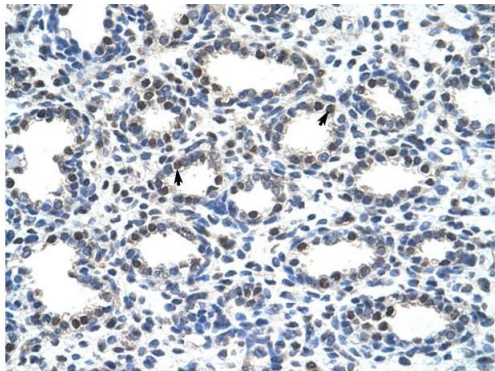
Storage Comment: For short term use, store at 2-8°C up to 1 week. For long term storage, store at -20°C in small aliquots to prevent freeze-thaw cycles.

Images



Western Blotting

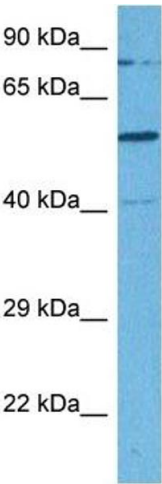
Image 1. WB Suggested Anti-SMARCD2 Antibody Titration: 0.2-1 ug/ml Positive Control: Jurkat cell lysate SMARCD2 is supported by BioGPS gene expression data to be expressed in Jurkat



Immunohistochemistry

Image 2. Rabbit Anti-SMARCD2 Antibody Paraffin Embedded Tissue: Human Lung Cellular Data: Alveolar cells Antibody Concentration: 16 ug/ml Magnification: 400X

Rabbit Anti-SMARCD2 Antibody
Catalog Number: ARP38223
Lot Number: QC10934
Paraffin Embedded Tissue: Human Lung
Cells with Positive label: Alveolar cells (Indicated with Arrows)
Antibody Concentration: 16.0 µg/ml
Magnification: 400X



Western Blotting

Image 3. Host: Rabbit Target Name: SMARCD2 Sample
Tissue: Human MDA-MB-435s Whole Cell Antibody Dilution:
1ug/ml

Please check the [product details page](#) for more images. Overall 4 images are available for ABIN2780464.