

Datasheet for ABIN2780465
anti-SMARCE1 antibody (N-Term)

5 Images

[Go to Product page](#)

Overview

Quantity:	100 µL
Target:	SMARCE1
Binding Specificity:	N-Term
Reactivity:	Human, Mouse, Rat, Rabbit, Dog, Horse, Cow, Guinea Pig, Zebrafish (Danio rerio)
Host:	Rabbit
Clonality:	Polyclonal
Conjugate:	This SMARCE1 antibody is un-conjugated
Application:	Western Blotting (WB), Immunohistochemistry (IHC)

Product Details

Immunogen:	The immunogen is a synthetic peptide directed towards the N terminal region of human SMARCE1
Sequence:	MSKRPSYAPP PTPAPATQMP STPGFVGYNP YSHLAYNNYR LGGNPGTNSR
Predicted Reactivity:	Cow: 100%, Dog: 100%, Guinea Pig: 100%, Horse: 100%, Human: 100%, Mouse: 100%, Rabbit: 100%, Rat: 100%, Zebrafish: 100%
Characteristics:	This is a rabbit polyclonal antibody against SMARCE1. It was validated on Western Blot and immunohistochemistry.
Purification:	Affinity Purified

Target Details

Target:	SMARCE1
---------	---------

Target Details

Alternative Name: SMARCE1 ([SMARCE1 Products](#))

Background: SMARCE1 is part of the large ATP-dependent chromatin remodeling complex SWI/SNF, which is required for transcriptional activation of genes normally repressed by chromatin. The protein, either alone or when in the SWI/SNF complex, can bind to 4-way junction DNA, which is thought to mimic the topology of DNA as it enters or exits the nucleosome. The protein contains a DNA-binding HMG domain, but disruption of this domain does not abolish the DNA-binding or nucleosome-displacement activities of the SWI/SNF complex. Unlike most of the SWI/SNF complex proteins, this protein has no yeast counterpart. The protein encoded by this gene is part of the large ATP-dependent chromatin remodeling complex SWI/SNF, which is required for transcriptional activation of genes normally repressed by chromatin. The encoded protein, either alone or when in the SWI/SNF complex, can bind to 4-way junction DNA, which is thought to mimic the topology of DNA as it enters or exits the nucleosome. The protein contains a DNA-binding HMG domain, but disruption of this domain does not abolish the DNA-binding or nucleosome-displacement activities of the SWI/SNF complex. Unlike most of the SWI/SNF complex proteins, this protein has no yeast counterpart.

Alias Symbols: BAF57

Protein Interaction Partner: NOTCH2NL, KRTAP10-9, CCDC172, NBPF22P, TXLNA, MIPOL1, KRT40, MRFAP1L1, SYCE1, ING5, USHBP1, CEP70, CEP63, CCDC136, RINT1, TRIM54, AMOTL2, MED4, TFIP11, NUP62, MTUS2, EXOC7, RALBP1, SPAG5, JAKMIP2, TRIP10, STX11, CEP170P1, MEOX2, KRT31, KRT15, KIFC3, GOLGA

Protein Size: 411

Molecular Weight: 47 kDa

Gene ID: 6605

NCBI Accession: [NM_003079](#), [NP_003070](#)

UniProt: [Q969G3](#)

Pathways: [Chromatin Binding](#)

Application Details

Application Notes: Optimal working dilutions should be determined experimentally by the investigator.

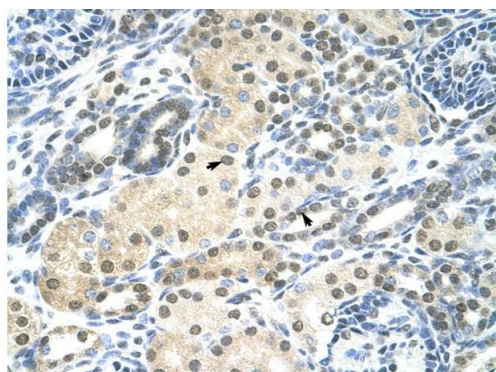
Comment: Antigen size: 411 AA

Restrictions: For Research Use only

Handling

Format:	Liquid
Concentration:	Lot specific
Buffer:	Liquid. Purified antibody supplied in 1x PBS buffer with 0.09 % (w/v) sodium azide and 2 % sucrose.
Preservative:	Sodium azide
Precaution of Use:	This product contains Sodium azide: a POISONOUS AND HAZARDOUS SUBSTANCE which should be handled by trained staff only.
Handling Advice:	Avoid repeated freeze-thaw cycles.
Storage:	-20 °C
Storage Comment:	For short term use, store at 2-8°C up to 1 week. For long term storage, store at -20°C in small aliquots to prevent freeze-thaw cycles.

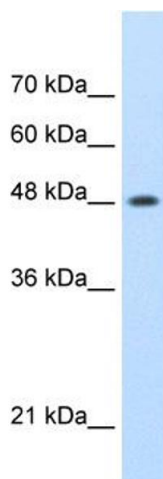
Images



Rabbit Anti-SMARCE1 Antibody
Catalog Number: ARP38224
Lot Number: QC10935
Paraffin Embedded Tissue: Human Kidney
Cells with Positive label: Epithelial cells of renal tubule (Indicated with Arrows)
Antibody Concentration: 4.0-8.0 µg/ml
Magnification: 400X

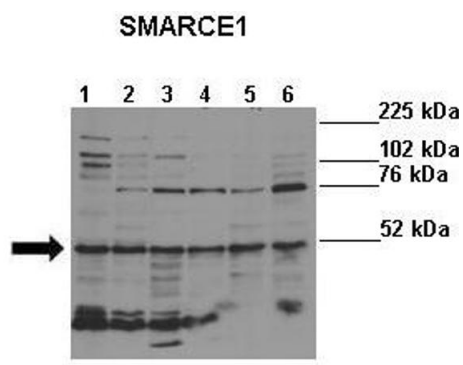
Immunohistochemistry

Image 1. Human kidney



Western Blotting

Image 2. WB Suggested Anti-SMARCE1 Antibody Titration: 0.2-1 ug/ml Positive Control: Jurkat cell lysate SMARCE1 is strongly supported by BioGPS gene expression data to be expressed in Human Jurkat cells



Western Blotting

Image 3. Lanes : Lane 1: HeLa (human) Lane 2: NHEK (human) Lane 3: Melba (mouse) Lane 4: NIH3T3 (mouse) Lane 5: S16 (rat) Lane 6: H9C2 (rat) Primary Antibody Dilution : 1:500 Secondary Antibody : Donkey anti-rabbit-HRP Secondary Antibody Dilution : 1:5000 Gene Name : SMARCE1 Submitted by : Ivana de la Serna, University of Toledo

Please check the [product details page](#) for more images. Overall 5 images are available for ABIN2780465.