

Datasheet for ABIN2780468
anti-SOX2 antibody (Middle Region)[Go to Product page](#)

6 Images

Overview

Quantity:	100 µL
Target:	SOX2
Binding Specificity:	Middle Region
Reactivity:	Human, Mouse, Rat, Goat, Cow, Zebrafish (Danio rerio), Sheep, Horse, Rabbit, Dog, Guinea Pig
Host:	Rabbit
Clonality:	Polyclonal
Conjugate:	This SOX2 antibody is un-conjugated
Application:	Western Blotting (WB), Immunohistochemistry (IHC)

Product Details

Immunogen:	The immunogen is a synthetic peptide directed towards the middle region of human SOX2
Sequence:	AGDLRDMISM YLPGAEVPEP AAPSR LHMSQ HYQSGPVPGT AINGTLPLSH
Predicted Reactivity:	Cow: 100%, Dog: 100%, Goat: 93%, Guinea Pig: 100%, Horse: 100%, Human: 100%, Mouse: 100%, Rabbit: 100%, Rat: 100%, Sheep: 100%, Zebrafish: 86%
Characteristics:	This is a rabbit polyclonal antibody against SOX2. It was validated on Western Blot using a cell lysate as a positive control.
Purification:	Affinity Purified

Target Details

Target:	SOX2
---------	------

Target Details

Alternative Name:	SOX2 (SOX2 Products)
Background:	<p>SOX2 is a member of the SRY-related HMG-box (SOX) family of transcription factors involved in the regulation of embryonic development and in the determination of cell fate. The protein may act as a transcriptional activator after forming a protein complex</p> <p>Alias Symbols: ANOP3, MCOPS3, MGC2413</p> <p>Protein Interaction Partner: SUMO1, DMAP1, TBX2, SETD7, FAM21A, FZR1, MMS19, MRPS35, ZNF462, LSM2, CCAR2, MIER1, ZDBF2, CHD8, EP400, TSHZ3, RANBP10, ZNF687, XPO5, INTS2, MTA3, CORO1B, CASC5, MRPS22, KCMF1, MEPCE, TRERF1, INTS9, PARVA, SCYL2, CHD7, ZCCHC8, SOX6, BRIX1, SAMD4B, GID8, C</p> <p>Protein Size: 317</p>
Molecular Weight:	34 kDa
Gene ID:	6657
NCBI Accession:	NM_003106 , NP_003097
UniProt:	P48431
Pathways:	Dopaminergic Neurogenesis , Sensory Perception of Sound , Stem Cell Maintenance , Cell RedoxHomeostasis

Application Details

Application Notes:	Optimal working dilutions should be determined experimentally by the investigator.
Comment:	Antigen size: 317 AA
Restrictions:	For Research Use only

Handling

Format:	Liquid
Concentration:	Lot specific
Buffer:	Liquid. Purified antibody supplied in 1x PBS buffer with 0.09 % (w/v) sodium azide and 2 % sucrose.
Preservative:	Sodium azide
Precaution of Use:	This product contains Sodium azide: a POISONOUS AND HAZARDOUS SUBSTANCE which should be handled by trained staff only.

Handling

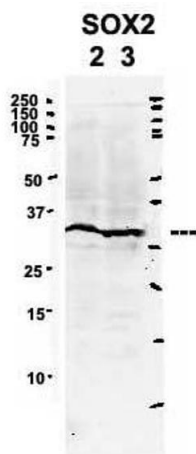
Handling Advice:	Avoid repeated freeze-thaw cycles.
Storage:	-20 °C
Storage Comment:	For short term use, store at 2-8°C up to 1 week. For long term storage, store at -20°C in small aliquots to prevent freeze-thaw cycles.

Images



Western Blotting

Image 1. WB Suggested Anti-SOX2 Antibody Titration: 0.2-1 ug/ml ELISA Titer: 1:1562500 Positive Control: HT1080 cell lysate



See Immunoblot 2 Data for more information.

Western Blotting

Image 2. Sample Type: 2. mouse brain extracts (80ug)
3. rat brain extract (80ug)

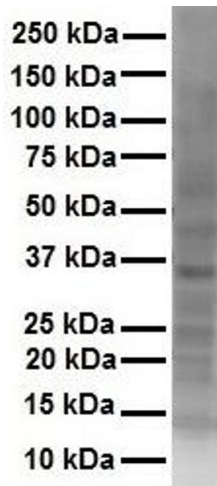
Primary Antibody Dilution: 2ug/ml

Secondary Antibody: IRDye 800CW goat anti-rabbit from Li-COR Bioscience

Secondary Antibody Dilution: 1: 20,000

Image Submitted by: Yuzhi Chen

University of Arkansas for Medical Science



Western Blotting

Image 3. WB Suggested Anti-SOX2 antibody Titration: 1 ug/mL Sample Type: Human Hela

Please check the [product details page](#) for more images. Overall 6 images are available for ABIN2780468.