

Datasheet for ABIN2780473
anti-SP4 antibody (Middle Region)[Go to Product page](#)

2 Images

Overview

Quantity:	100 µL
Target:	SP4
Binding Specificity:	Middle Region
Reactivity:	Human, Rat, Mouse, Horse, Rabbit, Cow, Dog, Guinea Pig
Host:	Rabbit
Clonality:	Polyclonal
Conjugate:	This SP4 antibody is un-conjugated
Application:	Western Blotting (WB), Immunohistochemistry (IHC)

Product Details

Immunogen:	The immunogen is a synthetic peptide directed towards the middle region of human SP4
Sequence:	GGTALAIVTS GELDSSVTEV LGSPRIVTVA AISQDSNPAT PNVSTNMEEF
Predicted Reactivity:	Cow: 100%, Dog: 100%, Guinea Pig: 93%, Horse: 100%, Human: 100%, Mouse: 100%, Rabbit: 100%, Rat: 100%
Characteristics:	This is a rabbit polyclonal antibody against SP4. It was validated on Western Blot using a cell lysate as a positive control.
Purification:	Affinity Purified

Target Details

Target:	SP4
---------	-----

Target Details

Alternative Name:	SP4 (SP4 Products)
Background:	<p>SP4 belongs to the Sp1 C2H2-type zinc-finger protein family. It contains 3 C2H2-type zinc fingers. SP4 binds to GT and GC boxes promoters elements. It is a probable transcriptional activator.</p> <p>Alias Symbols: HF1B, MGC130008, MGC130009, SPR-1</p> <p>Protein Interaction Partner: ADAM15, POU2F1, NRF1, TRY2P, ATXN7L1, PRR20A, CIB3, FOXP2, LM03, COL8A1, SERF2, CRX, NKX3-1, UBC, ZBTB7A, E2F1, SP1, SP3,</p> <p>Protein Size: 784</p>
Molecular Weight:	82 kDa
Gene ID:	6671
NCBI Accession:	NM_003112 , NP_003103
UniProt:	Q02446

Application Details

Application Notes:	Optimal working dilutions should be determined experimentally by the investigator.
Comment:	Antigen size: 784 AA
Restrictions:	For Research Use only

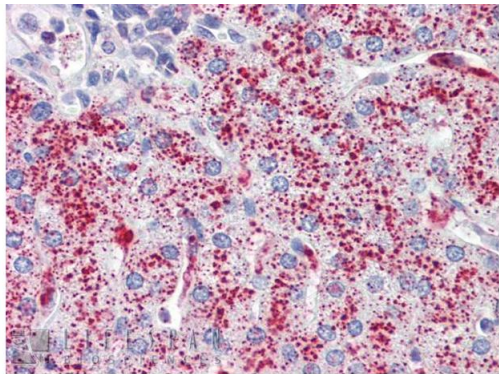
Handling

Format:	Liquid
Concentration:	Lot specific
Buffer:	Liquid. Purified antibody supplied in 1x PBS buffer with 0.09 % (w/v) sodium azide and 2 % sucrose.
Preservative:	Sodium azide
Precaution of Use:	This product contains Sodium azide: a POISONOUS AND HAZARDOUS SUBSTANCE which should be handled by trained staff only.
Handling Advice:	Avoid repeated freeze-thaw cycles.
Storage:	-20 °C
Storage Comment:	For short term use, store at 2-8°C up to 1 week. For long term storage, store at -20°C in small aliquots to prevent freeze-thaw cycles.



Western Blotting

Image 1. WB Suggested Anti-SP4 Antibody Titration: 0.2-1 ug/ml ELISA Titer: 1:1562500 Positive Control: HepG2 cell lysate



Immunohistochemistry

Image 2. Immunohistochemistry with Human Liver cell lysate tissue at an antibody concentration of 5.0ug/ml using anti-SP4 antibody

Rabbit Anti-SP4 Antibody
Catalog Number: ARP38239
Lot Number: QC11550
Paraffin Embedded Tissue: Human Liver
Antibody Concentration: 5.0 µg/ml

Data courtesy of Lifespan Biosciences, Inc.