

Datasheet for ABIN2780483
anti-Spt6 antibody (N-Term)

3 Images

[Go to Product page](#)

Overview

Quantity:	100 µL
Target:	Spt6 (SUPT6H)
Binding Specificity:	N-Term
Reactivity:	Human, Mouse, Rat, Dog, Cow, Horse, Rabbit, Guinea Pig, Zebrafish (Danio rerio), Saccharomyces cerevisiae
Host:	Rabbit
Clonality:	Polyclonal
Conjugate:	This Spt6 antibody is un-conjugated
Application:	Western Blotting (WB), Immunohistochemistry (IHC)

Product Details

Immunogen:	The immunogen is a synthetic peptide directed towards the N terminal region of human SUPT6H
Sequence:	EAESEEEYN DEGEVVRVT KKFVEEEDDD EEEEEENLDD QDEQGNLKGf
Predicted Reactivity:	Cow: 100%, Dog: 100%, Guinea Pig: 100%, Horse: 100%, Human: 100%, Mouse: 93%, Rabbit: 100%, Rat: 100%, Yeast: 77%, Zebrafish: 77%
Characteristics:	This is a rabbit polyclonal antibody against SUPT6H. It was validated on Western Blot using a cell lysate as a positive control.
Purification:	Protein A purified

Target Details

Target:	Spt6 (SUPT6H)
Alternative Name:	SUPT6H (SUPT6H Products)
Background:	<p>SUPT6H may be functionally analogous to SPT6 and emb-5 and may therefore regulate transcription through establishment or maintenance of chromatin structure. Spt6 may also participates in the regulation of transcription by RNA polymerase II (RNAPII). Human Spt6 (hSpt6) is a classic transcription elongation factor that enhances the rate of RNAPII elongation. HSpt6 is capable of stimulating transcription elongation both individually and in concert with DRB sensitivity-inducing factor (DSIF).</p> <p>Alias Symbols: SPT6, SPT6H, emb-5</p> <p>Protein Interaction Partner: CEP76, HAUS2, CEP250, TUBGCP3, CEP57, VCP, TUBG1, TP53, EMD, CDKN1A, UBC, EED, BMI1, POLR2C, ERBB2, CSNK2A1, BRCA1, MDC1, PAAF1, SIRT7, SUMO2, POLR2A, IWS1, WDR48, TCEA1,</p> <p>Protein Size: 1726</p>
Molecular Weight:	199 kDa
Gene ID:	6830
NCBI Accession:	NM_003170 , NP_003161
UniProt:	Q7KZ85
Pathways:	Regulation of Leukocyte Mediated Immunity , Regulation of Muscle Cell Differentiation , Production of Molecular Mediator of Immune Response

Application Details

Application Notes:	Optimal working dilutions should be determined experimentally by the investigator.
Comment:	Antigen size: 1726 AA
Restrictions:	For Research Use only

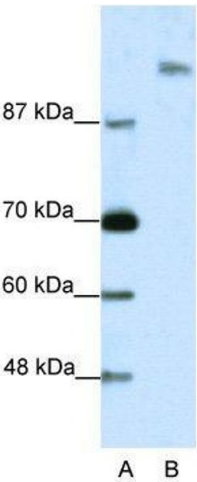
Handling

Format:	Liquid
Concentration:	Lot specific
Buffer:	Liquid. Purified antibody supplied in 1x PBS buffer with 0.09 % (w/v) sodium azide and 2 % sucrose.
Preservative:	Sodium azide

Handling

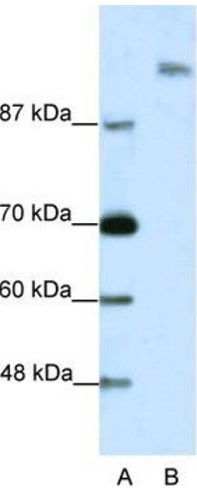
Precaution of Use:	This product contains Sodium azide: a POISONOUS AND HAZARDOUS SUBSTANCE which should be handled by trained staff only.
Handling Advice:	Avoid repeated freeze-thaw cycles.
Storage:	-20 °C
Storage Comment:	For short term use, store at 2-8°C up to 1 week. For long term storage, store at -20°C in small aliquots to prevent freeze-thaw cycles.

Images



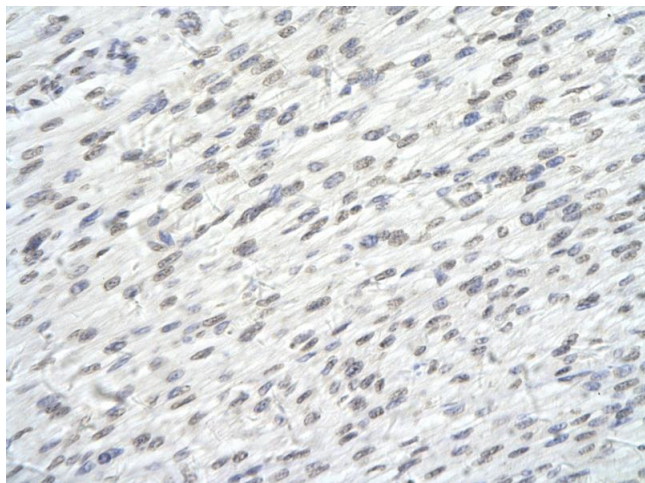
Western Blotting

Image 1. WB Suggested Anti-SUPT6H
Antibody Titration: 2.5 µg/mL ELISA Titer: 1:2500
Positive Control: Jurkat cell lysate
SUPT6H is strongly supported by BioGPS gene expression data to be expressed in Human Jurkat cells



Western Blotting

Image 2. WB Suggested Anti-SUPT6H Antibody Titration: 2.5ug/ml ELISA Titer: 1:62500 Positive Control: Jurkat cell lysate SUPT6H is strongly supported by BioGPS gene expression data to be expressed in Human Jurkat cells



Immunohistochemistry

Image 3. Rabbit Anti-SUPT6H antibody Paraffin Embedded

Tissue: Human Heart cell Cellular Data: Epithelial cells of renal tubule Antibody Concentration: 4.0-8.0 ug/ml

Magnification: 400X