

Datasheet for ABIN2780485
anti-TCF3 antibody (N-Term)

2 Images

[Go to Product page](#)

Overview

Quantity:	100 µL
Target:	TCF3
Binding Specificity:	N-Term
Reactivity:	Human, Mouse, Rat, Dog, Guinea Pig, Horse, Pig, Rabbit, Cow
Host:	Rabbit
Clonality:	Polyclonal
Conjugate:	This TCF3 antibody is un-conjugated
Application:	Western Blotting (WB)

Product Details

Immunogen:	The immunogen is a synthetic peptide directed towards the N terminal region of human TCF3
Sequence:	MNQPQRMAPV GTDKELSDLL DFSMMFPLPV TNGKGRPASL AGAQFGGSGSL
Predicted Reactivity:	Cow: 93%, Dog: 100%, Guinea Pig: 92%, Horse: 100%, Human: 100%, Mouse: 86%, Pig: 100%, Rabbit: 77%, Rat: 100%
Characteristics:	This is a rabbit polyclonal antibody against TCF3. It was validated on Western Blot using a cell lysate as a positive control.
Purification:	Protein A purified

Target Details

Target:	TCF3
---------	------

Target Details

Alternative Name:	TCF3 (TCF3 Products)
Background:	<p>TCF3 contains 1 basic helix-loop-helix (bHLH) domain. Heterodimers between TCF3 and tissue-specific basic helix-loop-helix (bHLH) proteins play major roles in determining tissue-specific cell fate during embryogenesis, like muscle or early B-cell differentiation. Dimers bind DNA on E-box motifs: 5'-CANNTG-3'. TCF3 binds to the kappa-E2 site in the kappa immunoglobulin gene enhancer.</p> <p>Alias Symbols: E2A, E47, ITF1, VDIR, TCF-3, bHLHb21</p> <p>Protein Interaction Partner: ID3, FAM115A, TLE1, RNF14, UBC, SCX, MAPKAPK2, MAPKAPK3, TCF21, Ube2i, ID2, FUS, CTNNB1, RPL37, MAX, USF1, TCF12, TCF3, MYOD1, Rufy1, Tfap4, Rpa1, Tbx6, Ncl, Twist2, SUPT3H, TRRAP, KAT2A, TADA2A, FOXH1, ELAVL1, TCF24, SETSIP, FLG2, BHLHA15, MYL6B, TIMM50,</p> <p>Protein Size: 654</p>
Molecular Weight:	68 kDa
Gene ID:	6929
NCBI Accession:	NM_003200 , NP_003191
UniProt:	P15923
Pathways:	WNT Signaling , Stem Cell Maintenance , Regulation of Muscle Cell Differentiation , Production of Molecular Mediator of Immune Response

Application Details

Application Notes:	Optimal working dilutions should be determined experimentally by the investigator.
Comment:	Antigen size: 654 AA
Restrictions:	For Research Use only

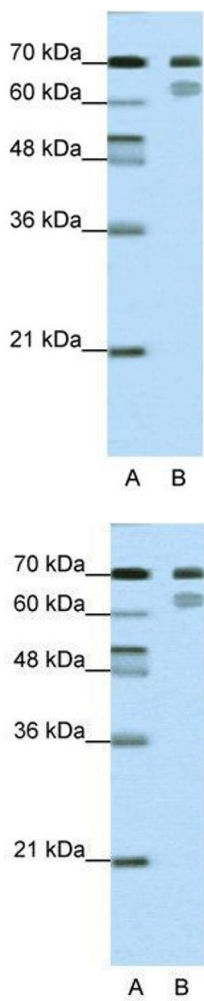
Handling

Format:	Liquid
Concentration:	Lot specific
Buffer:	Liquid. Purified antibody supplied in 1x PBS buffer with 0.09 % (w/v) sodium azide and 2 % sucrose.
Preservative:	Sodium azide
Precaution of Use:	This product contains Sodium azide: a POISONOUS AND HAZARDOUS SUBSTANCE which

Handling

	should be handled by trained staff only.
Handling Advice:	Avoid repeated freeze-thaw cycles.
Storage:	-20 °C
Storage Comment:	For short term use, store at 2-8°C up to 1 week. For long term storage, store at -20°C in small aliquots to prevent freeze-thaw cycles.

Images



Western Blotting

Image 1. WB Suggested Anti-TCF3 Antibody Titration: 0.31ug/ml ELISA Titer: 1:1562500 Positive Control: HepG2 cell lysate TCF3 is strongly supported by BioGPS gene expression data to be expressed in Human HepG2 cells

Western Blotting

Image 2. WB Suggested Anti-TCF3 Antibody Titration: 0.31 µg/mL ELISA Titer: 1:1562500 Positive Control: HepG2 cell lysate TCF3 is strongly supported by BioGPS gene expression data to be expressed in Human HepG2 cells