

Datasheet for ABIN2780493
anti-TEAD3 antibody (C-Term)



[Go to Product page](#)

2 Images

Overview

Quantity:	100 µL
Target:	TEAD3
Binding Specificity:	C-Term
Reactivity:	Human, Mouse, Rat, Dog, Cow, Horse, Guinea Pig, Rabbit, Zebrafish (Danio rerio)
Host:	Rabbit
Clonality:	Polyclonal
Conjugate:	This TEAD3 antibody is un-conjugated
Application:	Western Blotting (WB), Immunohistochemistry (IHC)

Product Details

Immunogen:	The immunogen is a synthetic peptide directed towards the C terminal region of human TEAD3
Sequence:	MMNSVLENFT ILQVVTSRDS QETLLVIAFV FEVSTSEHGA QHHVYKLVKD
Predicted Reactivity:	Cow: 100%, Dog: 100%, Guinea Pig: 100%, Horse: 100%, Human: 100%, Mouse: 100%, Rabbit: 100%, Rat: 100%, Zebrafish: 93%
Characteristics:	This is a rabbit polyclonal antibody against TEAD3. It was validated on Western Blot and immunohistochemistry.
Purification:	Affinity Purified

Target Details

Target:	TEAD3
---------	-------

Target Details

Alternative Name:	TEAD3 (TEAD3 Products)
Background:	<p>TEAD3 is a member of the transcriptional enhancer factor (TEF) family. The family members contain the TEA/ATTS DNA-binding domain. This member is preferentially expressed in placenta and transactivates the chorionic somatomammotropin gene enhancer. This gene encodes a member of the transcriptional enhancer factor (TEF) family. The family members contain the TEA/ATTS DNA-binding domain. This member is preferentially expressed in placenta and transactivates the chorionic somatomammotropin gene enhancer. The protein is encoded through the use of a non-AUG (ATA) translation initiation codon. This gene encodes a member of the transcriptional enhancer factor (TEF) family. The family members contain the TEA/ATTS DNA-binding domain. This member is preferentially expressed in placenta and transactivates the chorionic somatomammotropin gene enhancer. The protein is encoded through the use of a non-AUG (ATA) translation initiation codon.</p> <p>Alias Symbols: TEF5, TEAD5, TEF-5, DTEF-1, ETFR-1, TEAD-3</p> <p>Protein Interaction Partner: VGLL2, YAP1, KIFC2, PIDD1, PHB2, AP4S1, UBC, SUMO2, WWTR1, VGLL1, CTBP2, MYH7, E2F3, E2F1,</p> <p>Protein Size: 435</p>
Molecular Weight:	49 kDa
Gene ID:	7005
NCBI Accession:	NM_003214 , NP_003205
UniProt:	Q99594
Pathways:	Regulation of Lipid Metabolism by PPARalpha

Application Details

Application Notes:	Optimal working dilutions should be determined experimentally by the investigator.
Comment:	Antigen size: 435 AA
Restrictions:	For Research Use only

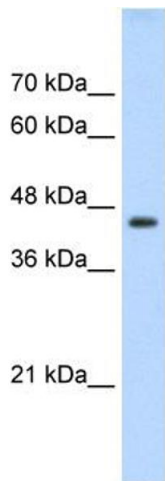
Handling

Format:	Liquid
Concentration:	Lot specific
Buffer:	Liquid. Purified antibody supplied in 1x PBS buffer with 0.09 % (w/v) sodium azide and 2 %

Handling

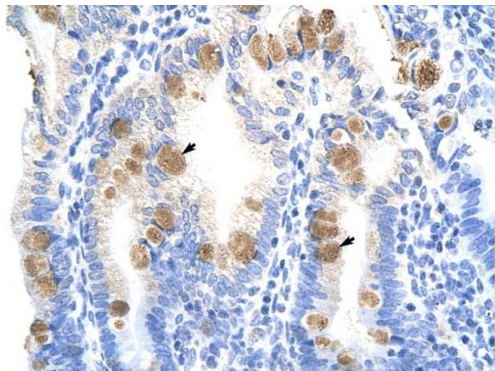
	sucrose.
Preservative:	Sodium azide
Precaution of Use:	This product contains Sodium azide: a POISONOUS AND HAZARDOUS SUBSTANCE which should be handled by trained staff only.
Handling Advice:	Avoid repeated freeze-thaw cycles.
Storage:	-20 °C
Storage Comment:	For short term use, store at 2-8°C up to 1 week. For long term storage, store at -20°C in small aliquots to prevent freeze-thaw cycles.

Images



Western Blotting

Image 1. WB Suggested Anti-TEAD3 Antibody Titration: 0.2-1 ug/ml Positive Control: HepG2 cell lysate TEAD3 is supported by BioGPS gene expression data to be expressed in HepG2



Rabbit Anti-TEAD3 Antibody
Catalog Number: ARP38278
Lot Number: QC10852
Paraffin Embedded Tissue: Human Intestine
Cells with Positive label: Epithelial cells of intestinal villus (Indicated with Arrows)
Antibody Concentration: 4.0-8.0 µg/ml
Magnification: 400X

Immunohistochemistry

Image 2. Human Intestine