

Datasheet for ABIN2780501
anti-TULP2 antibody (N-Term)[Go to Product page](#)

2 Images

Overview

Quantity:	100 µL
Target:	TULP2
Binding Specificity:	N-Term
Reactivity:	Human, Mouse, Rat, Cow, Dog, Guinea Pig, Horse
Host:	Rabbit
Clonality:	Polyclonal
Conjugate:	This TULP2 antibody is un-conjugated
Application:	Western Blotting (WB), Immunohistochemistry (IHC)

Product Details

Immunogen:	The immunogen is a synthetic peptide directed towards the N terminal region of human TULP2
Sequence:	MSQDNDTLMR DILGHELAAM RLQKLEQRR LFEKKQRQKR QELLMVQANP
Predicted Reactivity:	Cow: 86%, Dog: 79%, Guinea Pig: 79%, Horse: 93%, Human: 100%, Mouse: 86%, Rat: 86%
Characteristics:	This is a rabbit polyclonal antibody against TULP2. It was validated on Western Blot using a cell lysate as a positive control.
Purification:	Affinity Purified

Target Details

Target:	TULP2
Alternative Name:	TULP2 (TULP2 Products)

Target Details

Background:	<p>TULP2 is a member of a family of tubby-like genes (TULPs) that encode proteins of unknown function. Members of this family have been identified in plants, vertebrates, and invertebrates. The TULP proteins share a conserved C-terminal region of approximately 200 amino acid residues.</p> <p>TULP2 is a member of a family of tubby-like genes (TULPs) that encode proteins of unknown function. Members of this family have been identified in plants, vertebrates, and invertebrates. The TULP proteins share a conserved C-terminal region of approximately 200 amino acid residues.</p> <p>Alias Symbols: TUBL2, CT65</p> <p>Protein Interaction Partner: BRCA1, BARD1, ELAVL1, MEOX2, EWSR1,</p> <p>Protein Size: 520</p>
Molecular Weight:	59 kDa
Gene ID:	7288
NCBI Accession:	NM_003323 , NP_003314
UniProt:	O00295

Application Details

Application Notes:	Optimal working dilutions should be determined experimentally by the investigator.
Comment:	Antigen size: 520 AA
Restrictions:	For Research Use only

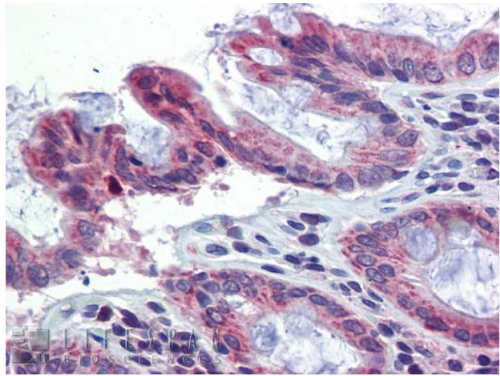
Handling

Format:	Liquid
Concentration:	Lot specific
Buffer:	Liquid. Purified antibody supplied in 1x PBS buffer with 0.09 % (w/v) sodium azide and 2 % sucrose.
Preservative:	Sodium azide
Precaution of Use:	This product contains Sodium azide: a POISONOUS AND HAZARDOUS SUBSTANCE which should be handled by trained staff only.
Handling Advice:	Avoid repeated freeze-thaw cycles.
Storage:	-20 °C

Handling

Storage Comment: For short term use, store at 2-8°C up to 1 week. For long term storage, store at -20°C in small aliquots to prevent freeze-thaw cycles.

Images



Rabbit Anti-TULP2 Antibody
Catalog Number: ARP38295
Lot Number: QC7989
Paraffin Embedded Tissue: Human Colon
Antibody Concentration: 5.0 µg/ml
Data courtesy of Lifespan Biosciences, Inc.

Immunohistochemistry

Image 1. Immunohistochemistry with Human Colon lysate tissue at an antibody concentration of 5.0ug/ml using anti-TULP2 antibody



Western Blotting

Image 2. WB Suggested Anti-TULP2 Antibody Titration: 0.2-1 ug/ml ELISA Titer: 1:1562500 Positive Control: Hela cell lysate