



[Go to Product page](#)

Datasheet for ABIN2780505

anti-ZFP36 antibody (Middle Region)

2 Images

Overview

Quantity:	100 µL
Target:	ZFP36
Binding Specificity:	Middle Region
Reactivity:	Human, Mouse, Rat, Dog, Cow, Guinea Pig, Rabbit, Sheep
Host:	Rabbit
Clonality:	Polyclonal
Conjugate:	This ZFP36 antibody is un-conjugated
Application:	Western Blotting (WB), Immunohistochemistry (IHC)

Product Details

Immunogen:	The immunogen is a synthetic peptide directed towards the middle region of human ZFP36
Sequence:	PSCRRATPIS VWGPLGGLVR TPSVQSLGSD PDEYASSGSS LGGSDSPVFE
Predicted Reactivity:	Cow: 100%, Dog: 100%, Guinea Pig: 100%, Human: 100%, Mouse: 93%, Rabbit: 100%, Rat: 93%, Sheep: 100%
Characteristics:	This is a rabbit polyclonal antibody against ZFP36. It was validated on Western Blot using a cell lysate as a positive control.
Purification:	Affinity Purified

Target Details

Target:	ZFP36
---------	-------

Target Details

Alternative Name: ZFP36 ([ZFP36 Products](#))

Background: ZFP36 is a probable regulatory protein with a novel zinc finger structure involved in regulating the response to growth factors. Knockdown of ZFP36 increased both cognate macrophage gene mRNAs and inflammatory tumor necrosis factor protein release. Overexpression of ZFP36 resulted in decreased levels of the same genes supporting its role in regulating macrophage gene expression. Multiple phosphorylation sites in ZFP36 in mammalian cells were reported. ZFP36 can be phosphorylated by JNK as well as by the other members of the greater MAP kinase family. Gene expression profiling predicts clinical outcome of prostate cancer. Inappropriate ZFP36 production may be one factor that contributes to higher rheumatoid arthritis disease activity.

Alias Symbols: G0S24, GOS24, NUP475, RNF162A, TIS11, TTP

Protein Interaction Partner: YWHAB, PPP2CA, DNAJB1, DCP1B, DHX36, PRR5L, XRN1, UBC, TRAF2, EXOSC6, UPF2, EXOSC8, YWHAQ, TNF, DCP2, EDC3, DCP1A, EDC4, CDK6, APP, LIN28A, SH3KBP1, PABPC1, NCL, MAP3K4, HSPA4, HDAC7, HDAC3, NFKB1, HOXC9, HDAC1, CCDC85B, MAPKAPK2, YWHAG, SFN, HMGB1, NUP21

Protein Size: 326

Molecular Weight: 34 kDa

Gene ID: 7538

NCBI Accession: [NM_003407](#), [NP_003398](#)

UniProt: [P26651](#)

Application Details

Application Notes: Optimal working dilutions should be determined experimentally by the investigator.

Comment: Antigen size: 326 AA

Restrictions: For Research Use only

Handling

Format: Liquid

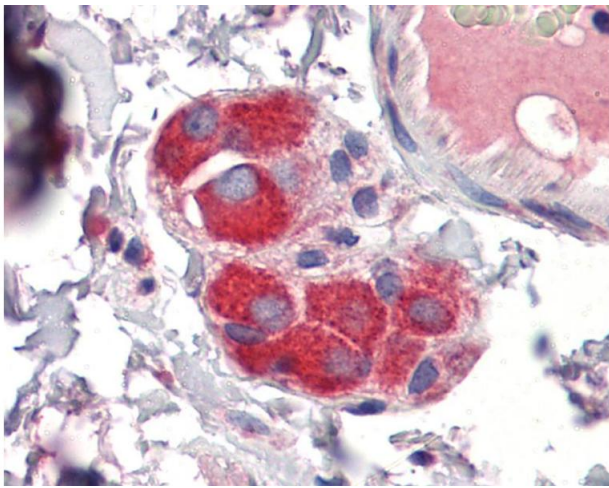
Concentration: Lot specific

Buffer: Liquid. Purified antibody supplied in 1x PBS buffer with 0.09 % (w/v) sodium azide and 2 % sucrose.

Handling

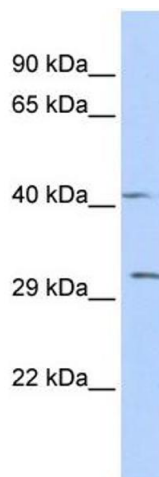
Preservative:	Sodium azide
Precaution of Use:	This product contains Sodium azide: a POISONOUS AND HAZARDOUS SUBSTANCE which should be handled by trained staff only.
Handling Advice:	Avoid repeated freeze-thaw cycles.
Storage:	-20 °C
Storage Comment:	For short term use, store at 2-8°C up to 1 week. For long term storage, store at -20°C in small aliquots to prevent freeze-thaw cycles.

Images



Immunohistochemistry

Image 1. IHC Information: Paraffin embedded small intestine, submucosal plexus tissue, tested with an antibody dilution of 5 ug/ml.



Western Blotting

Image 2. WB Suggested Anti-ZFP36 Antibody Titration: 0.2-1 ug/ml ELISA Titer: 1:312500 Positive Control: Human Lung