

Datasheet for ABIN2780537
anti-KLF11 antibody (C-Term)



[Go to Product page](#)

1 Image 1 Publication

Overview

Quantity:	100 µL
Target:	KLF11
Binding Specificity:	C-Term
Reactivity:	Human, Mouse, Rat, Rabbit, Cow, Dog, Horse, Guinea Pig, Zebrafish (Danio rerio)
Host:	Rabbit
Clonality:	Polyclonal
Conjugate:	This KLF11 antibody is un-conjugated
Application:	Western Blotting (WB)

Product Details

Immunogen:	The immunogen is a synthetic peptide directed towards the C terminal region of human KLF11
Sequence:	KFARSDELSR HRRHTHTGEKK FVCPVCDRRF MRSDHLTKHA RRHMTTKKIP
Predicted Reactivity:	Cow: 100%, Dog: 100%, Guinea Pig: 100%, Horse: 100%, Human: 100%, Mouse: 100%, Rabbit: 100%, Rat: 100%, Zebrafish: 100%
Characteristics:	This is a rabbit polyclonal antibody against KLF11. It was validated on Western Blot using a cell lysate as a positive control.
Purification:	Affinity Purified

Target Details

Target:	KLF11
---------	-------

Target Details

Alternative Name:	KLF11 (KLF11 Products)
Background:	<p>KLF11 (TIEG2) is a pancreas-enriched transcription factor that has elicited significant attention because of its role as negative regulator of exocrine cell growth in vitro and in vivo. It plays a role in the regulation of pancreatic beta cell physiology, and its variants may contribute to the development of diabetes.</p> <p>Alias Symbols: FKLF, FKLF1, MODY7, TIEG2, Tieg3</p> <p>Protein Interaction Partner: APPBP2, TXNDC9, APH1A, TIMM13, YWHAZ, CLU, SIN3A, MAPK1, ATXN1, CBX5, CBX3, CBX1, EP300, ELAVL1, UBC, HDAC1,</p> <p>Protein Size: 512</p>
Molecular Weight:	55 kDa
Gene ID:	8462
NCBI Accession:	NM_003597 , NP_003588
UniProt:	O14901

Application Details

Application Notes:	Optimal working dilutions should be determined experimentally by the investigator.
Comment:	Antigen size: 512 AA
Restrictions:	For Research Use only

Handling

Format:	Liquid
Concentration:	Lot specific
Buffer:	Liquid. Purified antibody supplied in 1x PBS buffer with 0.09 % (w/v) sodium azide and 2 % sucrose.
Preservative:	Sodium azide
Precaution of Use:	This product contains Sodium azide: a POISONOUS AND HAZARDOUS SUBSTANCE which should be handled by trained staff only.
Handling Advice:	Avoid repeated freeze-thaw cycles.
Storage:	-20 °C
Storage Comment:	For short term use, store at 2-8°C up to 1 week. For long term storage, store at -20°C in small

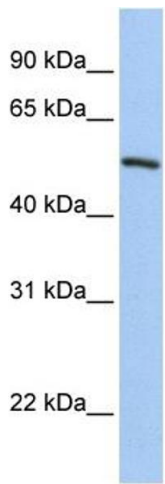
Handling

aliquots to prevent freeze-thaw cycles.

Publications

Product cited in: Duncan, Wang, Zhang, Johnson, Harris, Zheng, Zhang, Rajkowska, Miguel-Hidalgo, Sittman, Ou, Stockmeier, Wang: "Chronic Social Stress and Ethanol Increase Expression of KLF11, a Cell Death Mediator, in Rat Brain." in: **Neurotoxicity research**, Vol. 28, Issue 1, pp. 18-31, (2015) ([PubMed](#)).

Images



Western Blotting

Image 1. WB Suggested Anti-KLF11 Antibody Titration: 0.2-1 ug/ml ELISA Titer: 1:1562500 Positive Control: 721_B cell lysate