

Datasheet for ABIN2780542  
**anti-BLZF1 antibody (N-Term)**[Go to Product page](#)

## 3 Images

## Overview

Quantity:	100 µL
Target:	BLZF1
Binding Specificity:	N-Term
Reactivity:	Human, Mouse, Rat, Guinea Pig, Horse, Rabbit, Cow, Dog
Host:	Rabbit
Clonality:	Polyclonal
Conjugate:	This BLZF1 antibody is un-conjugated
Application:	Western Blotting (WB), Immunohistochemistry (IHC)

## Product Details

Immunogen:	The immunogen is a synthetic peptide directed towards the N terminal region of human BLZF1
Sequence:	MTTKNLETKV TVTSSPIRGA GDGMETEEPP KSVEVTSGVQ SRKHHSLSQSP
Predicted Reactivity:	Cow: 93%, Dog: 93%, Guinea Pig: 100%, Horse: 100%, Human: 100%, Mouse: 100%, Rabbit: 100%, Rat: 100%
Characteristics:	This is a rabbit polyclonal antibody against BLZF1. It was validated on Western Blot and immunohistochemistry.
Purification:	Protein A purified

## Target Details

Target:	BLZF1
---------	-------

## Target Details

Alternative Name:	BLZF1 ( <a href="#">BLZF1 Products</a> )
Background:	<p>BLZF1 is required for normal Golgi structure and for protein transport from the endoplasmic reticulum (ER) through the Golgi apparatus to the cell surface.</p> <p>Alias Symbols: JEM1, JEM-1, JEM-1s, GOLGIN-45</p> <p>Protein Interaction Partner: RHOJ, CHCHD3, RAB39A, TRAPPC2L, OAZ3, CINP, AMOTL2, TBC1D7, VPS28, AKAP9, ZBTB24, RANBP3, SSX2, RAB2A, PSMA1, PRKAB2, SMAD3, LMO2, LMO1, HOXA1, GEM, FHL2, BCL6, KLHL38, IQUB, FRMD6, FBF1, RAB2B, BEX2, ZGPAT, ZMAT1, TSC22D4, TXNDC5, CCDC33, SCN1, CARD9, Z</p> <p>Protein Size: 400</p>
Molecular Weight:	45 kDa
Gene ID:	8548
NCBI Accession:	<a href="#">NM_003666</a> , <a href="#">NP_003657</a>
UniProt:	<a href="#">Q9H2G9</a>

## Application Details

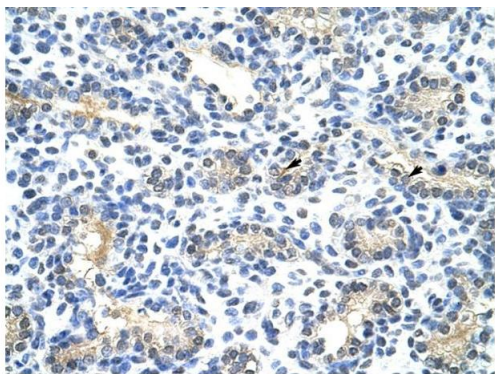
Application Notes:	Optimal working dilutions should be determined experimentally by the investigator.
Comment:	Antigen size: 400 AA
Restrictions:	For Research Use only

## Handling

Format:	Liquid
Concentration:	Lot specific
Buffer:	Liquid. Purified antibody supplied in 1x PBS buffer with 0.09 % (w/v) sodium azide and 2 % sucrose.
Preservative:	Sodium azide
Precaution of Use:	This product contains Sodium azide: a POISONOUS AND HAZARDOUS SUBSTANCE which should be handled by trained staff only.
Handling Advice:	Avoid repeated freeze-thaw cycles.
Storage:	-20 °C
Storage Comment:	For short term use, store at 2-8°C up to 1 week. For long term storage, store at -20°C in small

aliquots to prevent freeze-thaw cycles.

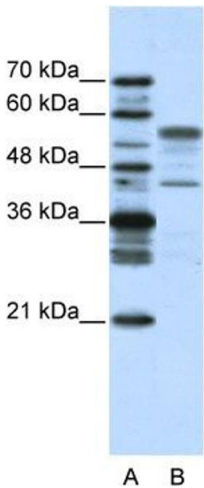
Images



Rabbit Anti-BLZF1 Antibody  
Catalog Number: ARP38375  
Lot Number: QC10873  
Paraffin Embedded Tissue: Human Lung  
Cells with Positive label: Alveolar cells (Indicated with Arrows)  
Antibody Concentration: 4.0-8.0 µg/ml  
Magnification: 400X

Immunohistochemistry

Image 1. Human Lung



Western Blotting

Image 2. WB Suggested Anti-BLZF1 Antibody Titration: 2.5ug/ml Positive Control: HepG2 cell lysate There is BioGPS gene expression data showing that BLZF1 is expressed in HepG2



Western Blotting

Image 3. WB Suggested Anti-BLZF1 Antibody Titration: 2.5 µg/mL Positive Control: HepG2 cell lysate There is BioGPS gene expression data showing that BLZF1 is expressed in HepG2