

Datasheet for ABIN2780547  
**anti-EDF1 antibody (Middle Region)**[Go to Product page](#)

## 3 Images

## Overview

Quantity:	100 µL
Target:	EDF1
Binding Specificity:	Middle Region
Reactivity:	Human, Mouse, Rat, Dog, Cow, Guinea Pig, Horse
Host:	Rabbit
Clonality:	Polyclonal
Conjugate:	This EDF1 antibody is un-conjugated
Application:	Western Blotting (WB), Immunohistochemistry (IHC), Immunofluorescence (IF)

## Product Details

Immunogen:	The immunogen is a synthetic peptide directed towards the middle region of human EDF1
Sequence:	INEKPQVIAD YESGRAIPNN QVLGKIERAI GLKLRGKDIG KPIEKGPRAK
Predicted Reactivity:	Cow: 100%, Dog: 100%, Guinea Pig: 100%, Horse: 100%, Human: 100%, Mouse: 93%, Rat: 100%
Characteristics:	This is a rabbit polyclonal antibody against EDF1. It was validated on Western Blot using a cell lysate as a positive control.
Purification:	Affinity Purified

## Target Details

Target:	EDF1
Alternative Name:	EDF1 ( <a href="#">EDF1 Products</a> )

## Target Details

Background:	<p>EDF1 encodes a protein that may regulate endothelial cell differentiation. It has been postulated that the protein functions as a bridging molecule that interconnects regulatory proteins and the basal transcriptional machinery, thereby modulating the transcription of genes involved in endothelial differentiation. This protein has also been found to act as a transcriptional coactivator by interconnecting the general transcription factor TATA element-binding protein (TBP) and gene-specific activators. Two alternatively spliced transcripts which encode distinct proteins have been found for this gene. This gene encodes a protein that may regulate endothelial cell differentiation. It has been postulated that the protein functions as a bridging molecule that interconnects regulatory proteins and the basal transcriptional machinery, thereby modulating the transcription of genes involved in endothelial differentiation. This protein has also been found to act as a transcriptional coactivator by interconnecting the general transcription factor TATA element-binding protein (TBP) and gene-specific activators. Two alternatively spliced transcripts which encode distinct proteins have been found for this gene.</p> <p>Alias Symbols: EDF-1, MBF1, MGC9058</p> <p>Protein Interaction Partner: MEOX2, UBC, IDH3G, UBE2I, MAPK6, NRL, JUN, CEBPA, NR1H3, NR5A2, PPARG, TBP, TAF1, NR5A1, RXRA, PRKCA, ATF2, CREB1, ATF1, CALM3, CALM1,</p> <p>Protein Size: 148</p>
-------------	--

Molecular Weight:	16 kDa
-------------------	--------

Gene ID:	8721
----------	------

NCBI Accession:	<a href="#">NM_003792</a> , <a href="#">NP_003783</a>
-----------------	---

UniProt:	<a href="#">O60869</a>
----------	------------------------

## Application Details

Application Notes:	Optimal working dilutions should be determined experimentally by the investigator.
--------------------	--

Comment:	Antigen size: 148 AA
----------	----------------------

Restrictions:	For Research Use only
---------------	-----------------------

## Handling

Format:	Liquid
---------	--------

Concentration:	Lot specific
----------------	--------------

Buffer:	Liquid. Purified antibody supplied in 1x PBS buffer with 0.09 % (w/v) sodium azide and 2 %
---------	--

## Handling

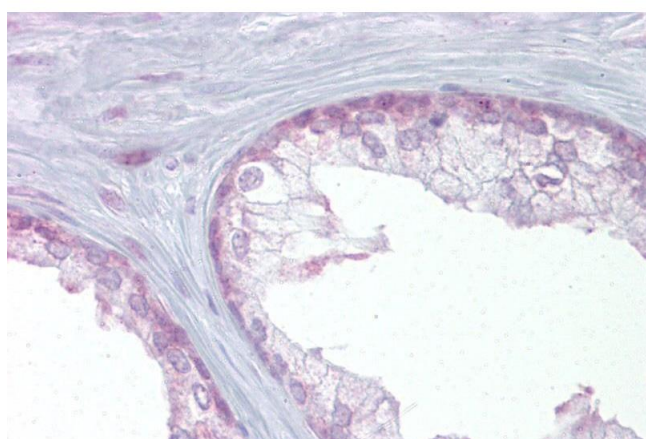
	sucrose.
Preservative:	Sodium azide
Precaution of Use:	This product contains Sodium azide: a POISONOUS AND HAZARDOUS SUBSTANCE which should be handled by trained staff only.
Handling Advice:	Avoid repeated freeze-thaw cycles.
Storage:	-20 °C
Storage Comment:	For short term use, store at 2-8°C up to 1 week. For long term storage, store at -20°C in small aliquots to prevent freeze-thaw cycles.

## Images



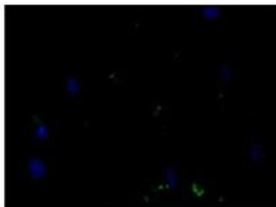
### Western Blotting

**Image 1.** WB Suggested Anti-EDF1 Antibody Titration: 0.2-1 ug/ml ELISA Titer: 1:312500 Positive Control: Human brain

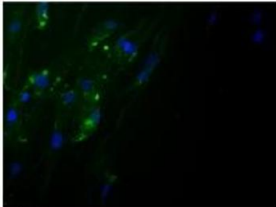


### Immunohistochemistry

**Image 2.** Immunohistochemistry with Prostate tissue at an antibody concentration of 5µg/ml using anti-EDF1 antibody (ARP38383\_P050)



Control: No antibody



EDF1

Immunofluorescence

**Image 3.** Sample Type : Fibroblasts