

Datasheet for ABIN2780559  
**anti-BUD31 antibody (N-Term)**

## 2 Images

[Go to Product page](#)

## Overview

|                      |   |
|----------------------|---|
| Quantity:            | 100 µL  |
| Target:              | BUD31   |
| Binding Specificity: | N-Term  |
| Reactivity:          | Human, Rat, Mouse, Cow, Zebrafish (Danio rerio), Dog, Rabbit, Guinea Pig, Horse, Saccharomyces cerevisiae |
| Host:                | Rabbit  |
| Clonality:           | Polyclonal  |
| Conjugate:           | This BUD31 antibody is un-conjugated  |
| Application:         | Western Blotting (WB), Immunohistochemistry (IHC)   |

## Product Details

|                       |   |
|-----------------------|---|
| Immunogen:            | The immunogen is a synthetic peptide directed towards the N terminal region of human BUD31  |
| Sequence:             | PKVKRSRKAP PDGWELIEPT LDELQKMRE AETEPHEGKR KVESLWPIFR   |
| Predicted Reactivity: | Cow: 100%, Dog: 100%, Guinea Pig: 100%, Horse: 100%, Human: 100%, Mouse: 100%, Rabbit: 100%, Rat: 100%, Yeast: 79%, Zebrafish: 100% |
| Characteristics:      | This is a rabbit polyclonal antibody against BUD31. It was validated on Western Blot using a cell lysate as a positive control.     |
| Purification:         | Affinity Purified   |

## Target Details

|         |       |
|---------|-------|
| Target: | BUD31 |
|---------|-------|

## Target Details

|                   |   |
|-------------------|---|
| Alternative Name: | BUD31 ( <a href="#">BUD31 Products</a> )  |
| Background:       | <p>The exact function of BUD31 remains unknown.</p> <p>Alias Symbols: EDG-2, EDG2, G10, MGC111202, YCR063W, fSAP17</p> <p>Protein Interaction Partner: KRTAP10-3, KRTAP10-7, BEND5, UBC, BMI1, CTNNBL1, RELB, ADCY7, TPBG, SON, SRSF7, SRSF3, RPS7, SEPT7, APP, ZNF326, ZC3H18, TRIM55, TRA2A, UTP14A, VTN, TPR, KIAA0101,</p> <p>Protein Size: 144</p> |
| Molecular Weight: | 17 kDa  |
| Gene ID:          | 8896  |
| NCBI Accession:   | <a href="#">NM_003910</a> , <a href="#">NP_003901</a>   |
| UniProt:          | <a href="#">P41223</a>  |

## Application Details

|                    |  |
|--------------------|--|
| Application Notes: | Optimal working dilutions should be determined experimentally by the investigator. |
| Comment:           | Antigen size: 144 AA   |
| Restrictions:      | For Research Use only  |

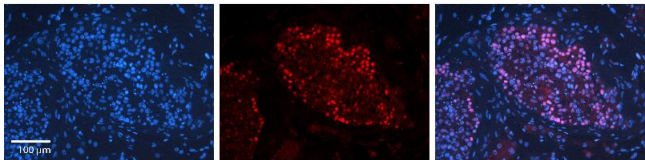
## Handling

|                    |   |
|--------------------|---|
| Format:            | Liquid  |
| Concentration:     | Lot specific  |
| Buffer:            | Liquid. Purified antibody supplied in 1x PBS buffer with 0.09 % (w/v) sodium azide and 2 % sucrose.                                     |
| Preservative:      | Sodium azide  |
| Precaution of Use: | This product contains Sodium azide: a POISONOUS AND HAZARDOUS SUBSTANCE which should be handled by trained staff only.                  |
| Handling Advice:   | Avoid repeated freeze-thaw cycles.  |
| Storage:           | -20 °C  |
| Storage Comment:   | For short term use, store at 2-8°C up to 1 week. For long term storage, store at -20°C in small aliquots to prevent freeze-thaw cycles. |



### Western Blotting

**Image 1.** WB Suggested Anti-BUD31 Antibody Titration: 0.2-1 ug/ml ELISA Titer: 1:312500 Positive Control: Transfected 293T



### Immunohistochemistry

**Image 2.** Rabbit Anti-BUD31 Antibody Formalin Fixed Paraffin Embedded Tissue: Human Testis Tissue Observed Staining: Nucleus in spermatogonia and spermatocytes Primary Antibody Concentration: 1:100 Other Working Concentrations: N/A Secondary Antibody: Donkey anti-Rabbit-Cy3 Secondary Antibody Concentration: 1:200 Magnification: 20X Exposure Time: 0.5 - 2.0 sec