

Datasheet for ABIN2780568  
**anti-E2F2 antibody (Middle Region)**[Go to Product page](#)

## 3 Images

## Overview

Quantity:	100 µL
Target:	E2F2
Binding Specificity:	Middle Region
Reactivity:	Human, Mouse, Rat, Rabbit, Dog, Cow, Guinea Pig, Horse, Zebrafish (Danio rerio)
Host:	Rabbit
Clonality:	Polyclonal
Conjugate:	This E2F2 antibody is un-conjugated
Application:	Western Blotting (WB), Immunohistochemistry (IHC)

## Product Details

Immunogen:	The immunogen is a synthetic peptide directed towards the middle region of human E2F2
Sequence:	DQFLSPTLAC SSPLISFSPS LDQDDYLWGL EAGEGISDLF DSYDLGDLII
Predicted Reactivity:	Cow: 92%, Dog: 100%, Guinea Pig: 91%, Horse: 100%, Human: 100%, Mouse: 100%, Rabbit: 100%, Rat: 100%, Zebrafish: 75%
Characteristics:	This is a rabbit polyclonal antibody against E2F2. It was validated on Western Blot using a cell lysate as a positive control.
Purification:	Affinity Purified

## Target Details

Target:	E2F2
---------	------

## Target Details

Alternative Name: E2F2 ([E2F2 Products](#))

**Background:** E2F2 is a member of the E2F family of transcription factors. The E2F family plays a crucial role in the control of cell cycle and action of tumor suppressor proteins and is also a target of the transforming proteins of small DNA tumor viruses. The E2F proteins contain several evolutionally conserved domains found in most members of the family. These domains include a DNA binding domain, a dimerization domain which determines interaction with the differentiation regulated transcription factor proteins (DP), a transactivation domain enriched in acidic amino acids, and a tumor suppressor protein association domain which is embedded within the transactivation domain. This protein and another 2 members, E2F1 and E2F3, have an additional cyclin binding domain. This protein binds specifically to retinoblastoma protein pRB in a cell-cycle dependent manner, and it exhibits overall 46 % amino acid identity to E2F1. The protein encoded by this gene is a member of the E2F family of transcription factors. The E2F family plays a crucial role in the control of cell cycle and action of tumor suppressor proteins and is also a target of the transforming proteins of small DNA tumor viruses. The E2F proteins contain several evolutionally conserved domains found in most members of the family. These domains include a DNA binding domain, a dimerization domain which determines interaction with the differentiation regulated transcription factor proteins (DP), a transactivation domain enriched in acidic amino acids, and a tumor suppressor protein association domain which is embedded within the transactivation domain. This protein and another 2 members, E2F1 and E2F3, have an additional cyclin binding domain. This protein binds specifically to retinoblastoma protein pRB in a cell-cycle dependent manner, and it exhibits overall 46 % amino acid identity to E2F1. Publication Note: This RefSeq record includes a subset of the publications that are available for this gene. Please see the Entrez Gene record to access additional publications.

Alias Symbols: E2F-2

Protein Interaction Partner: RB1, GNB5, GIT2, TFDP1, RBL1, ARID3A, ELAVL1, ATAD2, KMT2D, KMT2A, RYBP, SETD8, BCAR1, TFDP2, BRD2, YY1, SP1, CDK3, RNF144A, FHL2, SPIB, RBL2, E2F4, MYBL2, EAPP, TP53BP2, PPP1R13B, TP53INP1, JMY, GAB2, CDC25A, CDC6, E2F1, UXT, MT1G,

Protein Size: 437

Molecular Weight: 47 kDa

Gene ID: 1870

NCBI Accession: [NM\\_004091](#), [NP\\_004082](#)

UniProt: [Q14209](#)

## Target Details

Pathways: [Cell Division Cycle](#), [Mitotic G1-G1/S Phases](#), [DNA Replication](#)

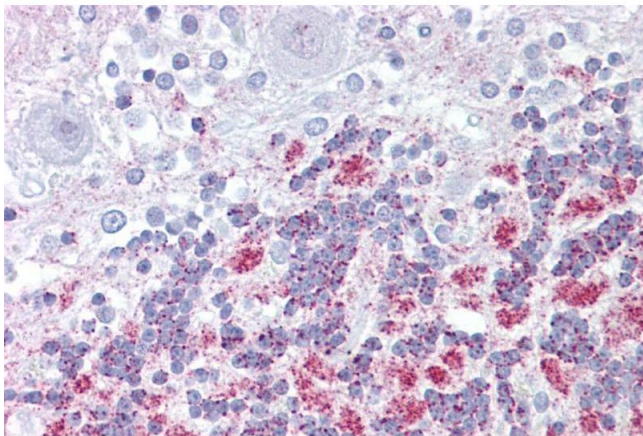
## Application Details

Application Notes:	Optimal working dilutions should be determined experimentally by the investigator.
Comment:	Antigen size: 437 AA
Restrictions:	For Research Use only

## Handling

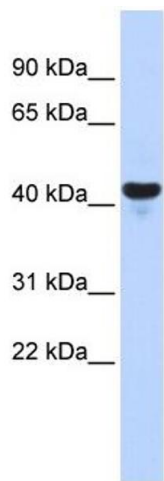
Format:	Liquid
Concentration:	Lot specific
Buffer:	Liquid. Purified antibody supplied in 1x PBS buffer with 0.09 % (w/v) sodium azide and 2 % sucrose.
Preservative:	Sodium azide
Precaution of Use:	This product contains Sodium azide: a POISONOUS AND HAZARDOUS SUBSTANCE which should be handled by trained staff only.
Handling Advice:	Avoid repeated freeze-thaw cycles.
Storage:	-20 °C
Storage Comment:	For short term use, store at 2-8°C up to 1 week. For long term storage, store at -20°C in small aliquots to prevent freeze-thaw cycles.

## Images



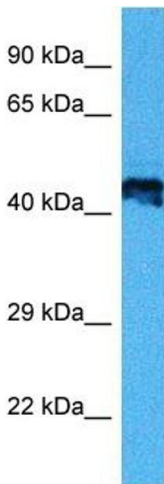
### Immunohistochemistry

**Image 1.** Immunohistochemistry with Brain, cerebellum tissue at an antibody concentration of 5µg/ml using anti-E2F2 antibody (ARP38418\_P050)



Western Blotting

**Image 2.** WB Suggested Anti-E2F2 Antibody Titration: 0.2-1 ug/ml ELISA Titer: 1:1562500 Positive Control: Human brain



Western Blotting

**Image 3.** Host: Mouse Target Name: E2F2 Sample Tissue: Mouse Heart Antibody Dilution: 1ug/ml