



[Go to Product page](#)

Datasheet for ABIN2780577
anti-KLF4 antibody (C-Term)

5 Images

1 Publication

Overview

Quantity:	100 µL
Target:	KLF4
Binding Specificity:	C-Term
Reactivity:	Human, Mouse, Rat, Cow, Horse, Dog, Rabbit, Guinea Pig, Zebrafish (Danio rerio)
Host:	Rabbit
Clonality:	Polyclonal
Conjugate:	This KLF4 antibody is un-conjugated
Application:	Western Blotting (WB), Immunohistochemistry (IHC)

Product Details

Immunogen:	The immunogen is a synthetic peptide directed towards the C terminal region of human KLF4
Sequence:	AGCGKTYTKS SHLKAHLRTH TGEKPYHCDW DGCGWKFARS DELTRHYRKH
Predicted Reactivity:	Cow: 100%, Dog: 100%, Guinea Pig: 100%, Horse: 100%, Human: 100%, Mouse: 100%, Rabbit: 100%, Rat: 100%, Zebrafish: 100%
Characteristics:	This is a rabbit polyclonal antibody against KLF4. It was validated on Western Blot using a cell lysate as a positive control.
Purification:	Affinity Purified

Target Details

Target:	KLF4
---------	------

Target Details

Alternative Name:	KLF4 (KLF4 Products)
Background:	<p>The mammalian Kruppel-like transcription factor, KLF4 is involved in preventing centrosome amplification following DNA damage caused by gamma-irradiation. It is both necessary and sufficient in preventing centrosome amplification following gamma-radiation-induced DNA damage and does so by transcriptionally suppressing cyclin E expression. Kruppel-like factor 4 is also known to exhibit checkpoint function during the G1/S and G2/M transitions of the cell cycle.</p> <p>Alias Symbols: EZF, GKLF</p> <p>Protein Interaction Partner: EP300, CREBBP, SETD7, CTBP1, Dlg4, APP, CUL2, VHL, UBC, TCEB2, SP1, RELA, PRKCD, PPARG, SMARCA4, HDAC2, HDAC7, KAT5, HDAC1, HDAC5, ELK1, KLF6, TP53,</p> <p>Protein Size: 470</p>
Molecular Weight:	50 kDa
Gene ID:	9314
NCBI Accession:	NM_004235 , NP_004226
UniProt:	O43474
Pathways:	Peptide Hormone Metabolism , Stem Cell Maintenance

Application Details

Application Notes:	Optimal working dilutions should be determined experimentally by the investigator.
Comment:	Antigen size: 470 AA
Restrictions:	For Research Use only

Handling

Format:	Liquid
Concentration:	Lot specific
Buffer:	Liquid. Purified antibody supplied in 1x PBS buffer with 0.09 % (w/v) sodium azide and 2 % sucrose.
Preservative:	Sodium azide
Precaution of Use:	This product contains Sodium azide: a POISONOUS AND HAZARDOUS SUBSTANCE which should be handled by trained staff only.

Handling

Handling Advice: Avoid repeated freeze-thaw cycles.

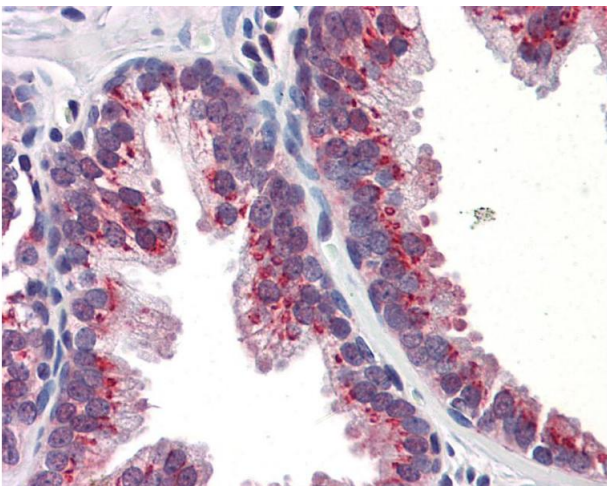
Storage: -20 °C

Storage Comment: For short term use, store at 2-8°C up to 1 week. For long term storage, store at -20°C in small aliquots to prevent freeze-thaw cycles.

Publications

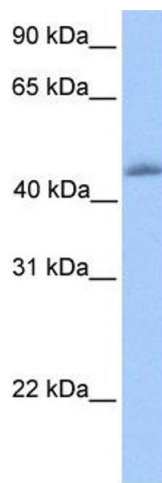
Product cited in: Hayashi, Gekka, Goto-Omoto, Takeuchi, Kubo, Kitahara: "Novel NR2E3 mutations (R104Q, R334G) associated with a mild form of enhanced S-cone syndrome demonstrate compound heterozygosity." in: **Ophthalmology**, Vol. 112, Issue 12, pp. 2115, (2005) ([PubMed](#)).

Images



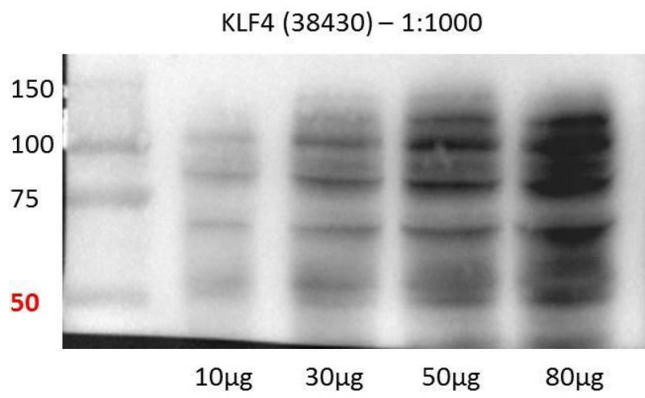
Immunohistochemistry

Image 1.



Western Blotting

Image 2. WB Suggested Anti-KLF4 Antibody Titration: 0.2-1 ug/ml Positive Control: Human heart



Western Blotting

Image 3. Human lung cell line

Please check the [product details page](#) for more images. Overall 5 images are available for ABIN2780577.