

Datasheet for ABIN2780592  
**anti-EGR3 antibody (N-Term)**[Go to Product page](#)

## 2 Images

## Overview

Quantity:	100 µL
Target:	EGR3
Binding Specificity:	N-Term
Reactivity:	Human, Mouse, Rat, Horse, Cow, Dog, Guinea Pig
Host:	Rabbit
Clonality:	Polyclonal
Conjugate:	This EGR3 antibody is un-conjugated
Application:	Western Blotting (WB), Immunohistochemistry (IHC)

## Product Details

Immunogen:	The immunogen is a synthetic peptide directed towards the N terminal region of human EGR3
Sequence:	LFSGSSDSVV HYNQMATENV MDIGLTNEKP NPELSYSGSF QPAPGNKTVT
Predicted Reactivity:	Cow: 93%, Dog: 93%, Guinea Pig: 93%, Horse: 86%, Human: 100%, Mouse: 93%, Rat: 86%
Characteristics:	This is a rabbit polyclonal antibody against EGR3. It was validated on Western Blot using a cell lysate as a positive control.
Purification:	Affinity Purified

## Target Details

Target:	EGR3
Alternative Name:	EGR3 ( <a href="#">EGR3 Products</a> )

## Target Details

Background: EGR3 is a probable transcription factor involved in muscle spindle development.  
Alias Symbols: MGC138484, PILOT, EGR-3  
Protein Interaction Partner: FASLG,  
Protein Size: 387

Molecular Weight: 42 kDa

Gene ID: 1960

NCBI Accession: [NM\\_004430](#), [NP\\_004421](#)

UniProt: [Q06889](#)

## Application Details

Application Notes: Optimal working dilutions should be determined experimentally by the investigator.

Comment: Antigen size: 387 AA

Restrictions: For Research Use only

## Handling

Format: Liquid

Concentration: Lot specific

Buffer: Liquid. Purified antibody supplied in 1x PBS buffer with 0.09 % (w/v) sodium azide and 2 % sucrose.

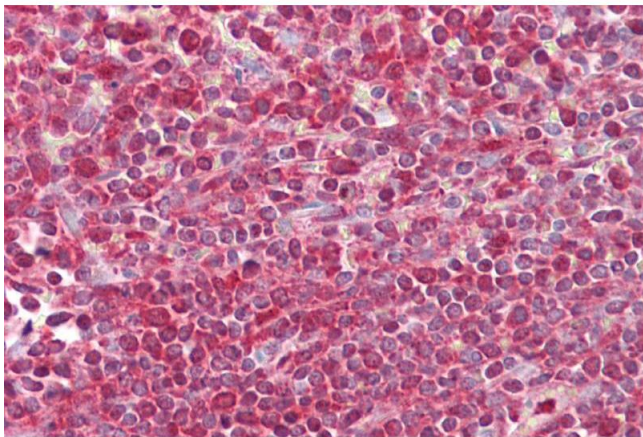
Preservative: Sodium azide

Precaution of Use: This product contains Sodium azide: a POISONOUS AND HAZARDOUS SUBSTANCE which should be handled by trained staff only.

Handling Advice: Avoid repeated freeze-thaw cycles.

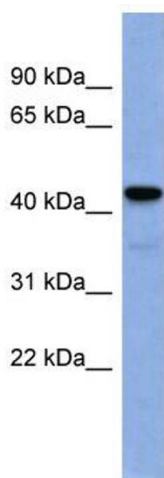
Storage: -20 °C

Storage Comment: For short term use, store at 2-8°C up to 1 week. For long term storage, store at -20°C in small aliquots to prevent freeze-thaw cycles.



Immunohistochemistry

**Image 1.** Immunohistochemistry with Spleen tissue at an antibody concentration of 5µg/ml using anti-EGR3 antibody (ARP38462\_P050)



Western Blotting

**Image 2.** WB Suggested Anti-EGR3 Antibody Titration: 0.2-1 ug/ml ELISA Titer: 1:62500 Positive Control: Human Spleen