

Datasheet for ABIN2780594
anti-ETV5 antibody (N-Term)[Go to Product page](#)

4 Images

Overview

Quantity:	100 µL
Target:	ETV5
Binding Specificity:	N-Term
Reactivity:	Human, Mouse, Rat, Dog, Cow, Guinea Pig, Horse, Rabbit, Zebrafish (Danio rerio)
Host:	Rabbit
Clonality:	Polyclonal
Conjugate:	This ETV5 antibody is un-conjugated
Application:	Western Blotting (WB)

Product Details

Immunogen:	The immunogen is a synthetic peptide directed towards the N terminal region of human ETV5
Sequence:	PFMVPGKSRS EECRGRPVID RKRKFLDSDL AHDSEELFQD LSQLEAWLA
Predicted Reactivity:	Cow: 100%, Dog: 100%, Guinea Pig: 100%, Horse: 100%, Human: 100%, Mouse: 100%, Rabbit: 100%, Rat: 100%, Zebrafish: 79%
Characteristics:	This is a rabbit polyclonal antibody against ETV5. It was validated on Western Blot using a cell lysate as a positive control.
Purification:	Affinity Purified

Target Details

Target:	ETV5
---------	------

Target Details

Alternative Name:	ETV5 (ETV5 Products)
Background:	<p>ETV5 Contains 1 ETS DNA-binding domain and belongs to the ETS family. The ETV5 gene expression is regulated by the conventional PKC (cPKC) pathway.ETV5 is subject to SUMO modification and this post-translational modification causes inhibition of transcription-enhancing activity Phosphorylated ETV5 and the actin cytoskeleton regulate CD44-mediated hyaluronan binding in myeloid cells. ERM5 (ezrin/radixin/moesin) function as adaptor molecules in the interactions of adhesion receptors and intracellular tyrosine kinases. ETV5 can cooperate with c-Jun and has a role in progression of breast cancer.</p> <p>Alias Symbols: ERM</p> <p>Protein Interaction Partner: RFWD2, HDAC11, DHRS7, SEZ6L2, SLC22A2, HOXD9, CYP3A5, CCR5, CISH, AMH, APP, BRCA1, ELAVL1, SUMO2, UBC, AR,</p> <p>Protein Size: 510</p>
Molecular Weight:	58 kDa
Gene ID:	2119
NCBI Accession:	NM_004454 , NP_004445
UniProt:	P41161
Pathways:	Synaptic Membrane , Skeletal Muscle Fiber Development

Application Details

Application Notes:	Optimal working dilutions should be determined experimentally by the investigator.
Comment:	Antigen size: 510 AA
Restrictions:	For Research Use only

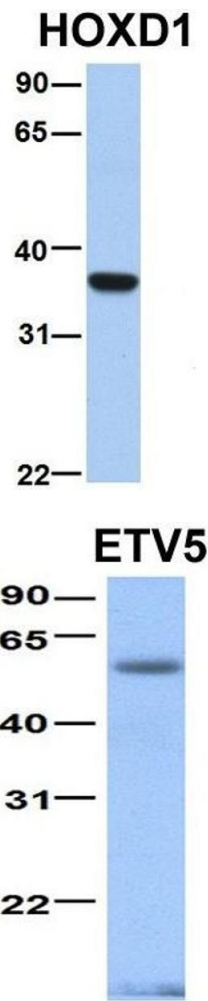
Handling

Format:	Liquid
Concentration:	Lot specific
Buffer:	Liquid. Purified antibody supplied in 1x PBS buffer with 0.09 % (w/v) sodium azide and 2 % sucrose.
Preservative:	Sodium azide
Precaution of Use:	This product contains Sodium azide: a POISONOUS AND HAZARDOUS SUBSTANCE which should be handled by trained staff only.

Handling

Handling Advice:	Avoid repeated freeze-thaw cycles.
Storage:	-20 °C
Storage Comment:	For short term use, store at 2-8°C up to 1 week. For long term storage, store at -20°C in small aliquots to prevent freeze-thaw cycles.

Images

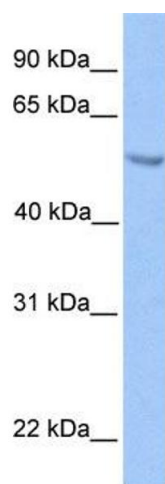


Western Blotting

Image 1. Host: Rabbit Target Name: ETV5 Sample Type: Human Fetal Liver Antibody Dilution: 1.0ug/ml

Western Blotting

Image 2. Host: Rabbit Target Name: ETV5 Sample Type: Human Fetal Heart Antibody Dilution: 1.0ug/ml



Western Blotting

Image 3. WB Suggested Anti-ETV5 Antibody Titration: 0.2-1 ug/ml Positive Control: Transfected 293T

Please check the [product details page](#) for more images. Overall 4 images are available for ABIN2780594.