



[Go to Product page](#)

Datasheet for ABIN2780595  
**anti-EZH2 antibody (N-Term)**

3 Images

Overview

Quantity:	100 µL
Target:	EZH2
Binding Specificity:	N-Term
Reactivity:	Human, Mouse, Rat, Rabbit, Dog, Zebrafish (Danio rerio), Cow, Guinea Pig, Horse
Host:	Rabbit
Clonality:	Polyclonal
Conjugate:	This EZH2 antibody is un-conjugated
Application:	Western Blotting (WB), Immunohistochemistry (IHC)

Product Details

Immunogen:	The immunogen is a synthetic peptide directed towards the N terminal region of human EZH2
Sequence:	KGPVCWRKRV KSEYMRLRQL KRFRRRADEVK SMFSSNRQKI LERTEILNQE
Specificity:	From peptide immunogen, will recognize all 5 isoforms.
Predicted Reactivity:	Cow: 100%, Dog: 100%, Guinea Pig: 100%, Horse: 100%, Human: 100%, Mouse: 100%, Rabbit: 100%, Rat: 100%, Zebrafish: 100%
Characteristics:	This is a rabbit polyclonal antibody against EZH2. It was validated on Western Blot and immunohistochemistry.
Purification:	Affinity Purified

## Target Details

---

Target:	EZH2
Alternative Name:	EZH2 ( <a href="#">EZH2 Products</a> )
Background:	<p>EZH2 is a member of the Polycomb-group (PcG) family. PcG family members form multimeric protein complexes, which are involved in maintaining the transcriptional repressive state of genes over successive cell generations. This protein associates with the embryonic ectoderm development protein, the VAV1 oncoprotein, and the X-linked nuclear protein. This protein may play a role in the hematopoietic and central nervous systems.</p> <p>Alias Symbols: ENX1, EZH1, KMT6, WVS2, ENX-1, KMT6A</p> <p>Protein Interaction Partner: FBXW11, CEP63, HOTAIR, EED, BRCA1, SUZ12, SNAI1, SRSF1, SDCBP, UPF1, RBBP7, RBBP4, RAP1GAP, PLEC, PKM, POTEE, DHX36, AEBP2, HIST4H4, KLC4, SERPINB12, PHF5A, FIP1L1, FBXL18, CPSF7, DDX3X, DBN1, SLC25A10, COPB1, CALML3, ATP5C1, ATP5B, ATP2A2, ARG1, AR, ANXA</p> <p>Protein Size: 751</p>
Molecular Weight:	85 kDa
Gene ID:	2146
NCBI Accession:	<a href="#">NM_001203247</a> , <a href="#">NP_004447</a>
UniProt:	<a href="#">Q15910</a>
Pathways:	<a href="#">Retinoic Acid Receptor Signaling Pathway</a> , <a href="#">Regulation of Muscle Cell Differentiation</a>

## Application Details

---

Application Notes:	Optimal working dilutions should be determined experimentally by the investigator.
Comment:	Antigen size: 751 AA
Restrictions:	For Research Use only

## Handling

---

Format:	Liquid
Concentration:	Lot specific
Buffer:	Liquid. Purified antibody supplied in 1x PBS buffer with 0.09 % (w/v) sodium azide and 2 % sucrose.
Preservative:	Sodium azide

## Handling

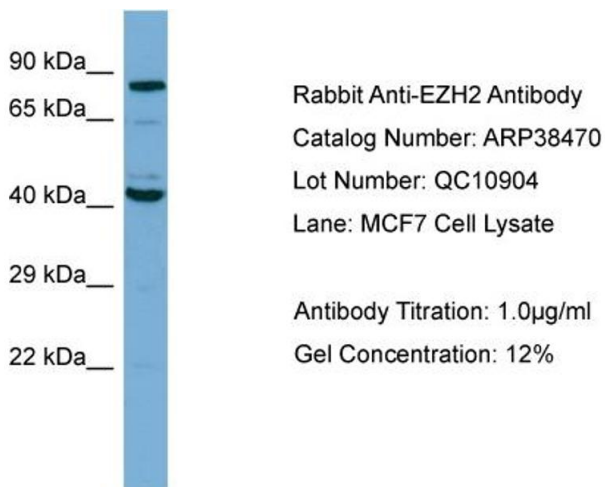
Precaution of Use: This product contains Sodium azide: a POISONOUS AND HAZARDOUS SUBSTANCE which should be handled by trained staff only.

Handling Advice: Avoid repeated freeze-thaw cycles.

Storage: -20 °C

Storage Comment: For short term use, store at 2-8°C up to 1 week. For long term storage, store at -20°C in small aliquots to prevent freeze-thaw cycles.

## Images

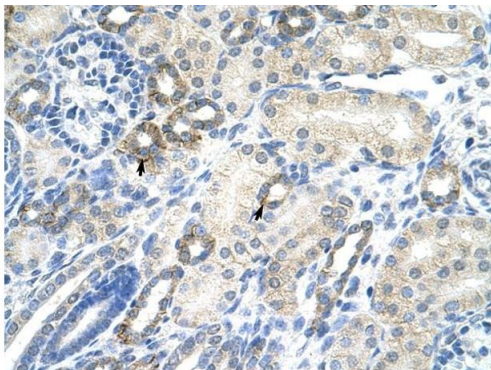


### Western Blotting

#### Image 1. WB Suggested Anti-EZH2 Antibody Titration:

1.0ug/ml

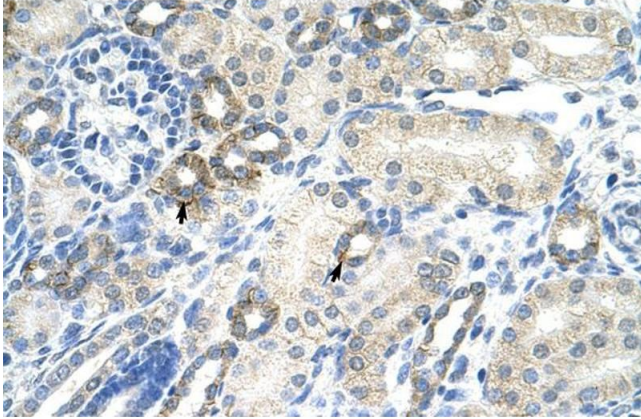
**Positive Control:** MCF7 cell lysate



Rabbit Anti-EZH2 Antibody  
Catalog Number: ARP38470  
Lot Number: QC10904  
Paraffin Embedded Tissue: Human Kidney  
Cells with Positive label: Epithelial cells of renal tubule (Indicated with Arrows)  
Antibody Concentration: 4.0-8.0 µg/ml  
Magnification: 400X

### Immunohistochemistry

#### Image 2. Human kidney



### Immunohistochemistry

**Image 3.** Human kidney