



[Go to Product page](#)

Datasheet for ABIN2780601

## anti-Homeobox C6 antibody (C-Term)

### 2 Images

#### Overview

Quantity:	100 µL
Target:	Homeobox C6 (HOXC6)
Binding Specificity:	C-Term
Reactivity:	Human, Mouse, Rat, Cow, Dog, Sheep, Guinea Pig, Rabbit, Horse
Host:	Rabbit
Clonality:	Polyclonal
Conjugate:	This Homeobox C6 antibody is un-conjugated
Application:	Western Blotting (WB), Immunohistochemistry (IHC)

#### Product Details

Immunogen:	The immunogen is a synthetic peptide directed towards the C terminal region of human HOXC6
Sequence:	KIWFQNRMRK WKKESNLTST LSGGGGATA DSLGGKEEKR EETEEKQKE
Predicted Reactivity:	Cow: 100%, Dog: 100%, Guinea Pig: 100%, Horse: 100%, Human: 100%, Mouse: 100%, Rabbit: 93%, Rat: 100%, Sheep: 100%
Characteristics:	This is a rabbit polyclonal antibody against HOXC6. It was validated on Western Blot.
Purification:	Affinity Purified

#### Target Details

Target:	Homeobox C6 (HOXC6)
Alternative Name:	HOXC6 ( <a href="#">HOXC6 Products</a> )

## Target Details

---

**Background:** This gene belongs to the homeobox family, members of which encode a highly conserved family of transcription factors that play an important role in morphogenesis in all multicellular organisms. Mammals possess four similar homeobox gene clusters, HOXA, HOXB, HOXC and HOXD, which are located on different chromosomes and consist of 9 to 11 genes arranged in tandem. This gene, HOXC6, is one of several HOXC genes located in a cluster on chromosome 12. Three genes, HOXC5, HOXC4 and HOXC6, share a 5' non-coding exon. Transcripts may include the shared exon spliced to the gene-specific exons, or they may include only the gene-specific exons. Alternatively spliced transcript variants encoding different isoforms have been identified for HOXC6. Transcript variant two includes the shared exon, and transcript variant one includes only gene-specific exons.

Alias Symbols: CP25, HHO.C8, HOX3, HOX3C  
Protein Interaction Partner: UBC, APP, HMGB1,  
Protein Size: 153

---

**Molecular Weight:** 18 kDa

---

**Gene ID:** 3223

---

**NCBI Accession:** [NM\\_153693](#), [NP\\_710160](#)

---

**UniProt:** [P09630](#)

---

## Application Details

---

**Application Notes:** Optimal working dilutions should be determined experimentally by the investigator.

---

**Comment:** Antigen size: 153 AA

---

**Restrictions:** For Research Use only

---

## Handling

---

**Format:** Liquid

---

**Concentration:** Lot specific

---

**Buffer:** Liquid. Purified antibody supplied in 1x PBS buffer with 0.09 % (w/v) sodium azide and 2 % sucrose.

---

**Preservative:** Sodium azide

---

**Precaution of Use:** This product contains Sodium azide: a POISONOUS AND HAZARDOUS SUBSTANCE which should be handled by trained staff only.

---

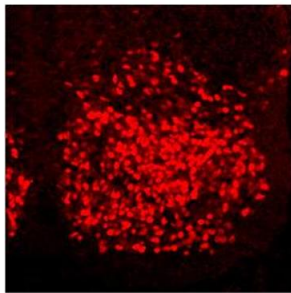
## Handling

Handling Advice: Avoid repeated freeze-thaw cycles.

Storage: -20 °C

Storage Comment: For short term use, store at 2-8°C up to 1 week. For long term storage, store at -20°C in small aliquots to prevent freeze-thaw cycles.

## Images



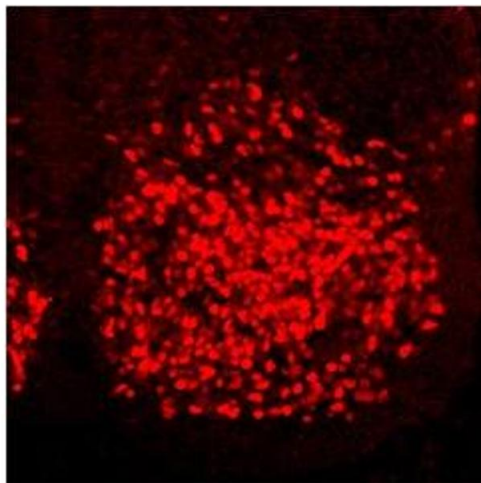
**HOXC6 (ARP38484\_P050)**  
Immunohistochemistry  
Sample: Mouse PFA-fixed spinal cord sections  
Dilution: 1:16,000

Application data in forum

Submitted by:  
Dr. Jeremy Dasen  
NYU School of Medicine

### Immunohistochemistry

**Image 1.** Sample Type: Mouse PFA-fixed spinal cord sections  
Primary Dilution: 1:16,000



### Immunohistochemistry

**Image 2.** Sample Type: Mouse PFA-fixed spinal cord sections  
Primary Dilution: 1:16,000