

Datasheet for ABIN2780604  
**anti-AF9 antibody (N-Term)**[Go to Product page](#)

## 3 Images

## Overview

Quantity:	100 µL
Target:	AF9 (MLLT3)
Binding Specificity:	N-Term
Reactivity:	Human, Mouse, Rat, Cow, Rabbit, Dog, Horse, Zebrafish (Danio rerio), Guinea Pig
Host:	Rabbit
Clonality:	Polyclonal
Conjugate:	This AF9 antibody is un-conjugated
Application:	Western Blotting (WB)

## Product Details

Immunogen:	The immunogen is a synthetic peptide directed towards the N terminal region of human MLLT3
Sequence:	MASSCAVQVK LELGHRAQVR KKPTVEGFTH DWMVFVRGPE HSNIQHFVEK
Predicted Reactivity:	Cow: 100%, Dog: 100%, Guinea Pig: 86%, Horse: 86%, Human: 100%, Mouse: 100%, Rabbit: 100%, Rat: 86%, Zebrafish: 100%
Characteristics:	This is a rabbit polyclonal antibody against MLLT3. It was validated on Western Blot using a cell lysate as a positive control.
Purification:	Affinity Purified

## Target Details

Target:	AF9 (MLLT3)
---------	-------------

## Target Details

Alternative Name:	MLLT3 ( <a href="#">MLLT3 Products</a> )
Background:	<p>MLLT3 is a regulator of early erythroid and megakaryocytic cell fate in the human system. Expression of MLLT3 in human CD34+ cells induces acute myeloid, lymphoid, or mixed-lineage leukemia in immunodeficient mice. Translocation t (9,11)(p22,q23), a chromosomal aberration involving MLLT3 is associated with acute leukemias.</p> <p>Alias Symbols: AF9, FLJ2035, YEATS3</p> <p>Protein Interaction Partner: CDK9, HSP90B1, EAF1, AFF4, ELL2, MED26, ELL, MLLT3, AFF1, MLLT1, CDK6, CCNT1, CCNT2, APP, Cbx8, DOT1L, PAF1, KMT2A, BCOR, MLLT10, RNF2, AFF3, EE2, ACACA, PCGF1, ELL3, NIPBL, SIRT1, LRIF1, RBM48, APPBP2, MCM6, PTN, EE1A1, SGK1, Protein Size: 568</p>
Molecular Weight:	63 kDa
Gene ID:	4300
NCBI Accession:	<a href="#">NM_004529</a> , <a href="#">NP_004520</a>
UniProt:	<a href="#">P42568</a>

## Application Details

Application Notes:	Optimal working dilutions should be determined experimentally by the investigator.
Comment:	Antigen size: 568 AA
Restrictions:	For Research Use only

## Handling

Format:	Liquid
Concentration:	Lot specific
Buffer:	Liquid. Purified antibody supplied in 1x PBS buffer with 0.09 % (w/v) sodium azide and 2 % sucrose.
Preservative:	Sodium azide
Precaution of Use:	This product contains Sodium azide: a POISONOUS AND HAZARDOUS SUBSTANCE which should be handled by trained staff only.
Handling Advice:	Avoid repeated freeze-thaw cycles.
Storage:	-20 °C

Handling

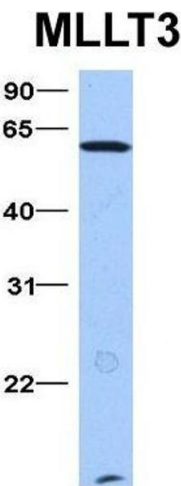
Storage Comment: For short term use, store at 2-8°C up to 1 week. For long term storage, store at -20°C in small aliquots to prevent freeze-thaw cycles.

Images



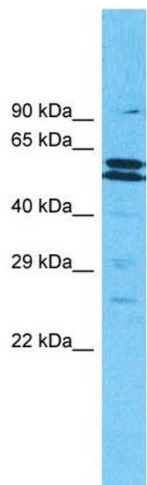
**Western Blotting**

**Image 1.** WB Suggested Anti-MLLT3 Antibody Titration: 0.2-1 ug/ml Positive Control: HepG2 cell lysate



**Western Blotting**

**Image 2.** Host: Rabbit Target Name: MLLT3 Sample Type: Hela Antibody Dilution: 1.0ug/ml MLLT3 is supported by BioGPS gene expression data to be expressed in HeLa



**Western Blotting**

**Image 3.** Host: Rabbit Target Name: MLLT3 Sample Type: 721\_B Cell lysates Antibody Dilution: 1.0ug/ml