

Datasheet for ABIN2780605
anti-AF9 antibody (C-Term)[Go to Product page](#)

4 Images

Overview

Quantity:	100 µL
Target:	AF9 (MLLT3)
Binding Specificity:	C-Term
Reactivity:	Human, Mouse, Rat, Cow, Rabbit, Dog, Horse, Zebrafish (Danio rerio), Guinea Pig
Host:	Rabbit
Clonality:	Polyclonal
Conjugate:	This AF9 antibody is un-conjugated
Application:	Western Blotting (WB)

Product Details

Immunogen:	The immunogen is a synthetic peptide directed towards the C terminal region of human MLLT3
Sequence:	ERHILQQIVN LIEETGHFHI TNTTFDFDLC SLDKTTVRKL QSYLETSGTS
Predicted Reactivity:	Cow: 100%, Dog: 100%, Guinea Pig: 100%, Horse: 100%, Human: 100%, Mouse: 100%, Rabbit: 100%, Rat: 100%, Zebrafish: 100%
Characteristics:	This is a rabbit polyclonal antibody against MLLT3. It was validated on Western Blot using a cell lysate as a positive control.
Purification:	Affinity Purified

Target Details

Target:	AF9 (MLLT3)
---------	-------------

Target Details

Alternative Name:	MLLT3 (MLLT3 Products)
Background:	<p>MLLT3 is a regulator of early erythroid and megakaryocytic cell fate in the human system. Expression of MLLT3 in human CD34+ cells induces acute myeloid, lymphoid, or mixed-lineage leukemia in immunodeficient mice. Translocation t (9,11)(p22,q23), a chromosomal aberration involving MLLT3 is associated with acute leukemias.</p> <p>Alias Symbols: AF9, FLJ2035, YEATS3</p> <p>Protein Interaction Partner: CDK9, HSP90B1, EAF1, AFF4, ELL2, MED26, ELL, MLLT3, AFF1, MLLT1, CDK6, CCNT1, CCNT2, APP, Cbx8, DOT1L, PAF1, KMT2A, BCOR, MLLT10, RNF2, AFF3, EEF2, ACACA, PCGF1, ELL3, NIPBL, SIRT1, LRIF1, RBM48, APPBP2, MCM6, PTN, EEF1A1, SGK1, Protein Size: 342</p>
Molecular Weight:	37 kDa
Gene ID:	4300
NCBI Accession:	NM_004529
UniProt:	Q6LEQ8

Application Details

Application Notes:	Optimal working dilutions should be determined experimentally by the investigator.
Comment:	Antigen size: 342 AA
Restrictions:	For Research Use only

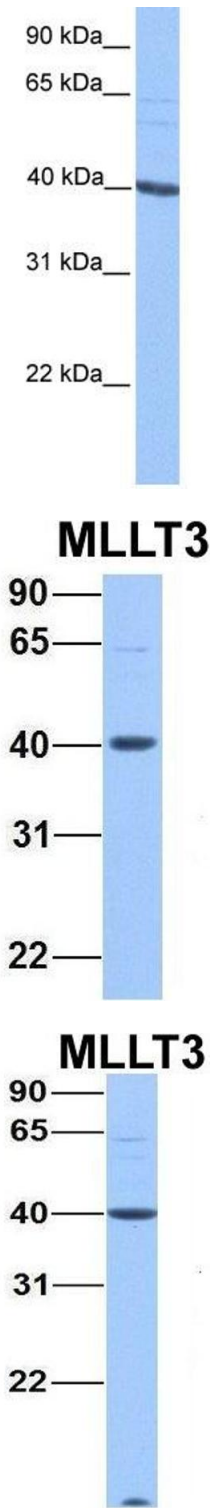
Handling

Format:	Liquid
Concentration:	Lot specific
Buffer:	Liquid. Purified antibody supplied in 1x PBS buffer with 0.09 % (w/v) sodium azide and 2 % sucrose.
Preservative:	Sodium azide
Precaution of Use:	This product contains Sodium azide: a POISONOUS AND HAZARDOUS SUBSTANCE which should be handled by trained staff only.
Handling Advice:	Avoid repeated freeze-thaw cycles.
Storage:	-20 °C

Handling

Storage Comment: For short term use, store at 2-8°C up to 1 week. For long term storage, store at -20°C in small aliquots to prevent freeze-thaw cycles.

Images



Western Blotting

Image 1. WB Suggested Anti-MLLT3 Antibody Titration: 0.2-1 ug/ml Positive Control: HepG2 cell lysate

Western Blotting

Image 2. Host: Rabbit Target Name: MLLT3 Sample Type: 721_B Antibody Dilution: 1.0ug/ml MLLT3 is strongly supported by BioGPS gene expression data to be expressed in Human 721_B cells

Western Blotting

Image 3. Host: Rabbit Target Name: MLLT3 Sample Type: HeLa Antibody Dilution: 1.0ug/ml MLLT3 is supported by BioGPS gene expression data to be expressed in HeLa

Please check the [product details page](#) for more images. Overall 4 images are available for ABIN2780605.