

Datasheet for ABIN2780607
anti-NFKBIE antibody (Middle Region)[Go to Product page](#)

2 Images

Overview

Quantity:	100 µL
Target:	NFKBIE
Binding Specificity:	Middle Region
Reactivity:	Human, Mouse, Rat, Cow, Pig, Guinea Pig, Horse, Rabbit
Host:	Rabbit
Clonality:	Polyclonal
Conjugate:	This NFKBIE antibody is un-conjugated
Application:	Western Blotting (WB)

Product Details

Immunogen:	The immunogen is a synthetic peptide directed towards the middle region of human NFKBIE
Sequence:	DARMLNGCTP LHLAAGRGLM GISSTLCKAG ADSLLRNVED ETPQDLTEES
Predicted Reactivity:	Cow: 93%, Guinea Pig: 92%, Horse: 93%, Human: 100%, Mouse: 92%, Pig: 93%, Rabbit: 93%, Rat: 92%
Characteristics:	This is a rabbit polyclonal antibody against NFKBIE. It was validated on Western Blot using a cell lysate as a positive control.
Purification:	Affinity Purified

Target Details

Target:	NFKBIE
---------	--------

Target Details

Alternative Name:	NFKBIE (NFKBIE Products)
Background:	<p>NFKB1 (MIM 164011) or NFKB2 (MIM 164012) is bound to REL (MIM 164910), RELA (MIM 164014), or RELB (MIM 604758) to form the NFKB complex. The NFKB complex is inhibited by I-kappa-B proteins (NFKBIA, MIM 164008 or NFKBIB, MIM 604495), which inactivate NF-κB.</p> <p>Alias Symbols: IKBE</p> <p>Protein Interaction Partner: UBC, KBTBD7, ANKHD1, RELA, C1QBP, LOC440434, HDAC5, HDAC4, NCOR2, CUL1, SKP1, PPP6C, JUP, REL, NFKB2, NFKB1, IL1A,</p> <p>Protein Size: 500</p>
Molecular Weight:	53 kDa
Gene ID:	4794
NCBI Accession:	NM_004556 , NP_004547
UniProt:	O00221
Pathways:	NF-kappaB Signaling , Maintenance of Protein Location

Application Details

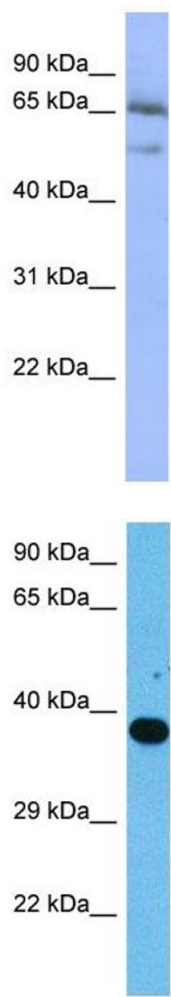
Application Notes:	Optimal working dilutions should be determined experimentally by the investigator.
Comment:	Antigen size: 500 AA
Restrictions:	For Research Use only

Handling

Format:	Liquid
Concentration:	Lot specific
Buffer:	Liquid. Purified antibody supplied in 1x PBS buffer with 0.09 % (w/v) sodium azide and 2 % sucrose.
Preservative:	Sodium azide
Precaution of Use:	This product contains Sodium azide: a POISONOUS AND HAZARDOUS SUBSTANCE which should be handled by trained staff only.
Handling Advice:	Avoid repeated freeze-thaw cycles.
Storage:	-20 °C
Storage Comment:	For short term use, store at 2-8°C up to 1 week. For long term storage, store at -20°C in small

aliquots to prevent freeze-thaw cycles.

Images



Western Blotting

Image 1. WB Suggested Anti-NFKBIE Antibody Titration: 0.2-1 ug/ml ELISA Titer: 1:62500 Positive Control: HT1080 cell lysate

Western Blotting

Image 2. Host: Mouse Target Name: NFKBIE Sample Tissue: Mouse Testis Antibody Dilution: 1ug/ml