

Datasheet for ABIN2780612  
**anti-TCF15 antibody (N-Term)**[Go to Product page](#)

## 1 Image

## Overview

Quantity:	100 µL
Target:	TCF15
Binding Specificity:	N-Term
Reactivity:	Human, Mouse, Dog, Rat, Cow, Guinea Pig, Horse, Rabbit, Zebrafish (Danio rerio)
Host:	Rabbit
Clonality:	Polyclonal
Conjugate:	This TCF15 antibody is un-conjugated
Application:	Western Blotting (WB)

## Product Details

Immunogen:	The immunogen is a synthetic peptide directed towards the N terminal region of human TCF15
Sequence:	MAFALLRPVG AHVLYPDVRL LSEDEENRSE SDASDQSFSGC CEGPEAARRG
Predicted Reactivity:	Cow: 100%, Dog: 100%, Guinea Pig: 100%, Horse: 100%, Human: 100%, Mouse: 100%, Rabbit: 100%, Rat: 100%, Zebrafish: 77%
Characteristics:	This is a rabbit polyclonal antibody against TCF15. It was validated on Western Blot using a cell lysate as a positive control.
Purification:	Protein A purified

## Target Details

Target:	TCF15
---------	-------

## Target Details

Alternative Name:	TCF15 ( <a href="#">TCF15 Products</a> )
Background:	<p>TCF15 is found in the nucleus and may be involved in the early transcriptional regulation of patterning of the mesoderm. The basic helix-loop-helix protein requires dimerization with another basic helix-loop-helix protein for efficient DNA binding. The protein encoded by this gene is found in the nucleus and may be involved in the early transcriptional regulation of patterning of the mesoderm. The encoded basic helix-loop-helix protein requires dimerization with another basic helix-loop-helix protein for efficient DNA binding.</p> <p>Alias Symbols: EC2, PARAXIS, bHLHa40</p> <p>Protein Interaction Partner: RAD21,</p> <p>Protein Size: 199</p>
Molecular Weight:	21 kDa
Gene ID:	6939
NCBI Accession:	<a href="#">NM_004609</a> , <a href="#">NP_004600</a>
UniProt:	<a href="#">Q12870</a>
Pathways:	<a href="#">Feeding Behaviour</a>

## Application Details

Application Notes:	Optimal working dilutions should be determined experimentally by the investigator.
Comment:	Antigen size: 199 AA
Restrictions:	For Research Use only

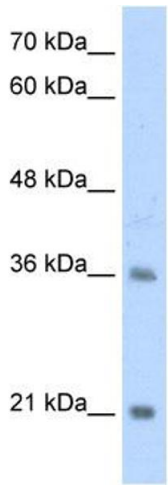
## Handling

Format:	Liquid
Concentration:	Lot specific
Buffer:	Liquid. Purified antibody supplied in 1x PBS buffer with 0.09 % (w/v) sodium azide and 2 % sucrose.
Preservative:	Sodium azide
Precaution of Use:	This product contains Sodium azide: a POISONOUS AND HAZARDOUS SUBSTANCE which should be handled by trained staff only.
Handling Advice:	Avoid repeated freeze-thaw cycles.

Handling

Storage:	-20 °C
Storage Comment:	For short term use, store at 2-8°C up to 1 week. For long term storage, store at -20°C in small aliquots to prevent freeze-thaw cycles.

Images



Western Blotting

**Image 1.** WB Suggested Anti-TCF15 Antibody Titration:  
2.5ug/ml Positive Control: Jurkat cell lysate