

Datasheet for ABIN2780614
anti-LRRFIP1 antibody (N-Term)

2 Images

[Go to Product page](#)

Overview

Quantity:	100 µL
Target:	LRRFIP1
Binding Specificity:	N-Term
Reactivity:	Human, Mouse, Cow, Dog, Guinea Pig, Rabbit, Horse, Rat, Zebrafish (Danio rerio), Saccharomyces cerevisiae
Host:	Rabbit
Clonality:	Polyclonal
Conjugate:	This LRRFIP1 antibody is un-conjugated
Application:	Western Blotting (WB)

Product Details

Immunogen:	The immunogen is a synthetic peptide directed towards the N terminal region of human LRRFIP1
Sequence:	AEAREIRMKE LERQQKEEDS ERYSSRRRN TSASDEDERM SVGSRGSLRV
Predicted Reactivity:	Cow: 100%, Dog: 100%, Guinea Pig: 100%, Horse: 100%, Human: 100%, Mouse: 100%, Rabbit: 100%, Rat: 100%, Yeast: 90%, Zebrafish: 100%
Characteristics:	This is a rabbit polyclonal antibody against LRRFIP1. It was validated on Western Blot using a cell lysate as a positive control.
Purification:	Affinity Purified

Target Details

Target:	LRRFIP1
Alternative Name:	LRRFIP1 (LRRFIP1 Products)
Background:	<p>LRRFIP1 is a transcriptional repressor which preferentially binds to the GC-rich consensus sequence (5'-AGCCCCCGGCG-3') and may regulate expression of TNF, EGFR and PDGFA.</p> <p>LRRFIP1 may control smooth muscle cells proliferation following artery injury throu</p> <p>Alias Symbols: FLAP-1, FLIAP1, GCF-2, GCF2, HUF1-1, MGC10947, MGC119738, MGC119739, TRIP, FLAP1</p> <p>Protein Interaction Partner: CEP44, MED4, UBC, LGR4, RNF2, C14orf166, RTCB, RPLP0, RFC2, PRKDC, MRE11A, FLII, EPRS, DHX9, DDX1, DPY30, FKBP3, DYNC1H1, Grip, GRIP1, EP300, CTNNB1, MYD88,</p> <p>Protein Size: 784</p>
Molecular Weight:	86 kDa
Gene ID:	9208
NCBI Accession:	NM_004735 , NP_004726

Application Details

Application Notes:	Optimal working dilutions should be determined experimentally by the investigator.
Comment:	Antigen size: 784 AA
Restrictions:	For Research Use only

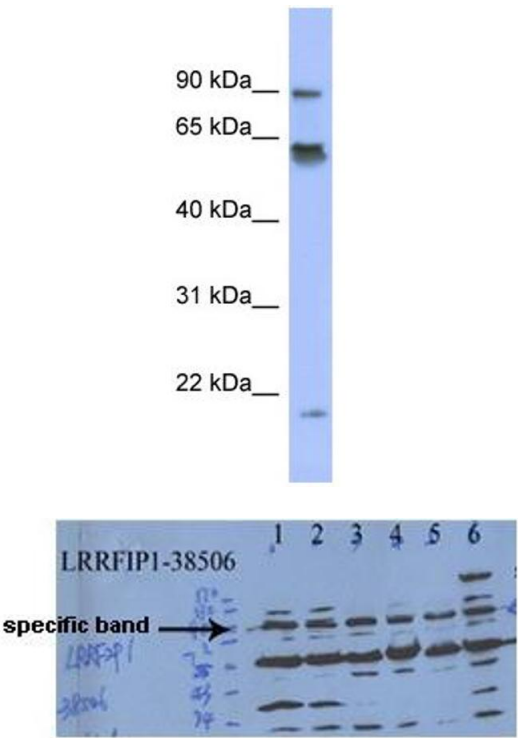
Handling

Format:	Liquid
Concentration:	Lot specific
Buffer:	Liquid. Purified antibody supplied in 1x PBS buffer with 0.09 % (w/v) sodium azide and 2 % sucrose.
Preservative:	Sodium azide
Precaution of Use:	This product contains Sodium azide: a POISONOUS AND HAZARDOUS SUBSTANCE which should be handled by trained staff only.
Handling Advice:	Avoid repeated freeze-thaw cycles.
Storage:	-20 °C

Handling

Storage Comment: For short term use, store at 2-8°C up to 1 week. For long term storage, store at -20°C in small aliquots to prevent freeze-thaw cycles.

Images



- Legend**
- 1. Huh7.5-TLR3 mock
 - 2. Huh7.5-TLR3 HCV infection (MOI-0.1)
 - 3. 293-TLR3 mock
 - 4. 293-TLR3-LRRFIP1-iso2
 - 5. 293-TLR3-LRRFIP1-iso2 deletion
 - 6. 293-TLR3-LRRFIP1-iso5

Western Blotting

Image 1. WB Suggested Anti-LRRFIP1 Antibody Titration: 0.2-1 ug/ml ELISA Titer: 1:312500 Positive Control: NCI-H226 cell lysate

Western Blotting

Image 2. Sample Type: Hepatitis C Virus & 293 Transfections Primary Dilution: 1ug/mL