

Datasheet for ABIN2780627
anti-ETV1 antibody (Middle Region)[Go to Product page](#)

4 Images

Overview

Quantity:	100 µL
Target:	ETV1
Binding Specificity:	Middle Region
Reactivity:	Human, Mouse, Rat, Cow, Dog, Horse, Rabbit, Guinea Pig, Zebrafish (Danio rerio)
Host:	Rabbit
Clonality:	Polyclonal
Conjugate:	This ETV1 antibody is un-conjugated
Application:	Western Blotting (WB), Immunohistochemistry (IHC)

Product Details

Immunogen:	The immunogen is a synthetic peptide directed towards the middle region of human ETV1
Sequence:	PDNQRPLLKT DMERHINEED TVPLSHFDES MAYMPEGGCC NPHPYNEGYV
Predicted Reactivity:	Cow: 100%, Dog: 100%, Guinea Pig: 100%, Horse: 100%, Human: 100%, Mouse: 100%, Rabbit: 86%, Rat: 100%, Zebrafish: 86%
Characteristics:	This is a rabbit polyclonal antibody against ETV1. It was validated on Western Blot using a cell lysate as a positive control.
Purification:	Affinity Purified

Target Details

Target:	ETV1
---------	------

Target Details

Alternative Name:	ETV1 (ETV1 Products)
Background:	<p>ETV1 is a transcriptional activator that binds to DNA sequences containing the consensus pentanucleotide 5'-CGGA[AT]-3'.</p> <p>Alias Symbols: DKFZp781L0674, ER81, MGC104699, MGC120533, MGC120534</p> <p>Protein Interaction Partner: RFWD2, CCND3, NSMCE2, SUMO1, UBC, RPS6KA5, KAT2B, EP300, MAPKAPK2, RPS6KA1, PRKACA, KCNA2, ERG, MAPK8, MAPK3, MAPK14, SPI1, NCOA3,</p> <p>Protein Size: 477</p>
Molecular Weight:	55 kDa
Gene ID:	2115
NCBI Accession:	NM_004956 , NP_004947
UniProt:	P50549

Application Details

Application Notes:	Optimal working dilutions should be determined experimentally by the investigator.
Comment:	Antigen size: 477 AA
Restrictions:	For Research Use only

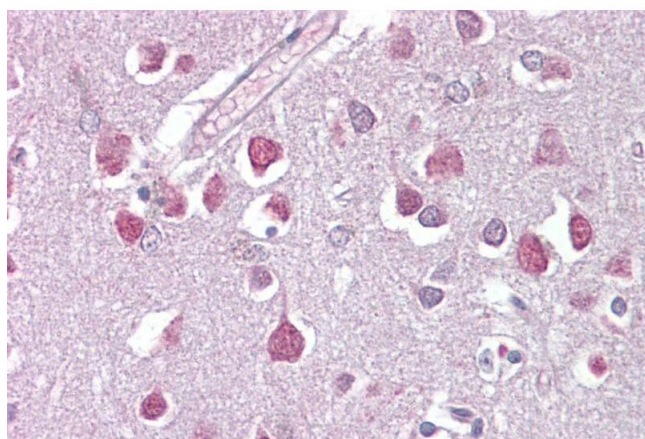
Handling

Format:	Liquid
Concentration:	Lot specific
Buffer:	Liquid. Purified antibody supplied in 1x PBS buffer with 0.09 % (w/v) sodium azide and 2 % sucrose.
Preservative:	Sodium azide
Precaution of Use:	This product contains Sodium azide: a POISONOUS AND HAZARDOUS SUBSTANCE which should be handled by trained staff only.
Handling Advice:	Avoid repeated freeze-thaw cycles.
Storage:	-20 °C
Storage Comment:	For short term use, store at 2-8°C up to 1 week. For long term storage, store at -20°C in small aliquots to prevent freeze-thaw cycles.



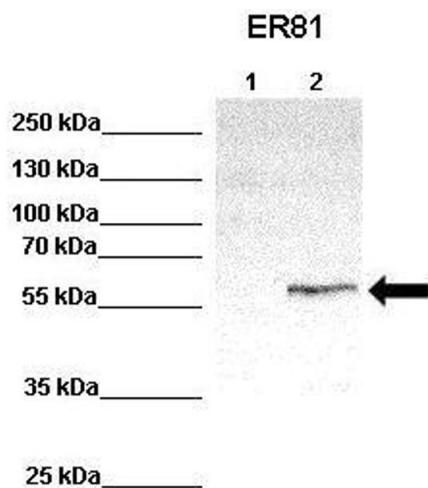
Western Blotting

Image 1. WB Suggested Anti-ETV1 Antibody Titration: 0.2-1 ug/ml ELISA Titer: 1:1562500 Positive Control: HT1080 cell lysate



Immunohistochemistry

Image 2. Immunohistochemistry with Brain, cortex tissue at an antibody concentration of 5µg/ml using anti-ETV1 antibody (ARP38528_P050)



Western Blotting

Image 3. WB Suggested Anti-ETV1 Antibody Positive Control: Lane 1: 100ug untransfected HEK293 lysate Lane 2: 33ug ER81 transfected HEK293 lysate Primary Antibody Dilution : 1:1000 Secondary Antibody : Anti-rabbit-HRP Secondary Antibody Dilution : 1:2000 Submitted by: Anonymous

Please check the [product details page](#) for more images. Overall 4 images are available for ABIN2780627.