

Datasheet for ABIN2780637
anti-PITX3 antibody (N-Term)



[Go to Product page](#)

1 Image

Overview

Quantity:	100 µL
Target:	PITX3
Binding Specificity:	N-Term
Reactivity:	Human, Mouse, Rat, Cow, Dog, Horse, Rabbit, Sheep, Guinea Pig, Pig
Host:	Rabbit
Clonality:	Polyclonal
Conjugate:	This PITX3 antibody is un-conjugated
Application:	Western Blotting (WB)

Product Details

Immunogen:	The immunogen is a synthetic peptide directed towards the N terminal region of human PITX3
Sequence:	ARSPALSLSD AGTPHPQLPE HGCKGQEHSD SEKASASLPG GSPEDGSLKK
Predicted Reactivity:	Cow: 93%, Dog: 86%, Guinea Pig: 93%, Horse: 100%, Human: 100%, Mouse: 100%, Pig: 100%, Rabbit: 100%, Rat: 100%, Sheep: 93%
Characteristics:	This is a rabbit polyclonal antibody against PITX3. It was validated on Western Blot using a cell lysate as a positive control.
Purification:	Affinity Purified

Target Details

Target:	PITX3
---------	-------

Target Details

Alternative Name:	PITX3 (PITX3 Products)
Background:	<p>PITX3 is a member of the RIEG/PITX homeobox family, which is in the bicoid class of homeodomain proteins. Members of this family act as transcription factors. Mutations of PITX3 have been associated with anterior segment mesenchymal dysgenesis (ASMD) and congenital cataracts. PITX3 is involved in lens formation during eye development. This gene encodes a member of the RIEG/PITX homeobox family, which is in the bicoid class of homeodomain proteins. Members of this family act as transcription factors. Mutations of this gene have been associated with anterior segment mesenchymal dysgenesis (ASMD) and congenital cataracts. This protein is involved in lens formation during eye development.</p> <p>Alias Symbols: PTX3, CTPP4</p> <p>Protein Interaction Partner: PARK7, MTA1, SFPQ, NONO,</p> <p>Protein Size: 302</p>
Molecular Weight:	32 kDa
Gene ID:	5309
NCBI Accession:	NM_005029 , NP_005020
UniProt:	O75364

Application Details

Application Notes:	Optimal working dilutions should be determined experimentally by the investigator.
Comment:	Antigen size: 302 AA
Restrictions:	For Research Use only

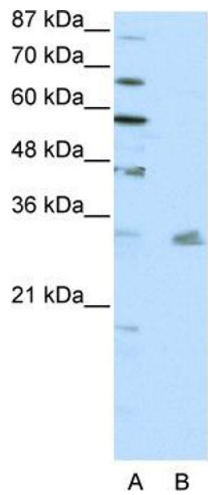
Handling

Format:	Liquid
Concentration:	Lot specific
Buffer:	Liquid. Purified antibody supplied in 1x PBS buffer with 0.09 % (w/v) sodium azide and 2 % sucrose.
Preservative:	Sodium azide
Precaution of Use:	This product contains Sodium azide: a POISONOUS AND HAZARDOUS SUBSTANCE which should be handled by trained staff only.
Handling Advice:	Avoid repeated freeze-thaw cycles.

Handling

Storage:	-20 °C
Storage Comment:	For short term use, store at 2-8°C up to 1 week. For long term storage, store at -20°C in small aliquots to prevent freeze-thaw cycles.

Images



Western Blotting

Image 1. WB Suggested Anti-PITX3 Antibody Titration: 0.2-1 ug/ml ELISA Titer: 1:1562500 Positive Control: HepG2 cell lysate