

Datasheet for ABIN2780642
anti-ZNF142 antibody (C-Term)[Go to Product page](#)

2 Images

1 Publication

Overview

Quantity:	100 µL
Target:	ZNF142
Binding Specificity:	C-Term
Reactivity:	Human, Cow, Guinea Pig, Horse, Mouse, Rabbit, Rat, Dog
Host:	Rabbit
Clonality:	Polyclonal
Conjugate:	This ZNF142 antibody is un-conjugated
Application:	Western Blotting (WB), Immunohistochemistry (IHC)

Product Details

Immunogen:	The immunogen is a synthetic peptide directed towards the C terminal region of human ZNF142
Sequence:	YKAKQKFQVV KHVRRHHPDQ ADPNQGVGKD PTTPTVHLHD VQLEDPSPPA
Predicted Reactivity:	Cow: 100%, Dog: 93%, Guinea Pig: 100%, Horse: 100%, Human: 100%, Mouse: 100%, Rabbit: 100%, Rat: 100%
Characteristics:	This is a rabbit polyclonal antibody against ZNF142. It was validated on Western Blot.
Purification:	Affinity Purified

Target Details

Target:	ZNF142
---------	--------

Target Details

Alternative Name:	ZNF142 (ZNF142 Products)
Background:	The function of ZNF142 remains unknown. Alias Symbols: pH Z-49 Protein Interaction Partner: CHMP5, UBC, MAPK14, Protein Size: 1524
Molecular Weight:	171 kDa
Gene ID:	7701
NCBI Accession:	NM_005081 , NP_005072
UniProt:	A8MWU9

Application Details

Application Notes:	Optimal working dilutions should be determined experimentally by the investigator.
Comment:	Antigen size: 1524 AA
Restrictions:	For Research Use only

Handling

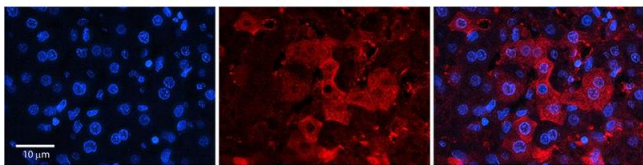
Format:	Liquid
Concentration:	Lot specific
Buffer:	Liquid. Purified antibody supplied in 1x PBS buffer with 0.09 % (w/v) sodium azide and 2 % sucrose.
Preservative:	Sodium azide
Precaution of Use:	This product contains Sodium azide: a POISONOUS AND HAZARDOUS SUBSTANCE which should be handled by trained staff only.
Handling Advice:	Avoid repeated freeze-thaw cycles.
Storage:	-20 °C
Storage Comment:	For short term use, store at 2-8°C up to 1 week. For long term storage, store at -20°C in small aliquots to prevent freeze-thaw cycles.

Publications

Product cited in:	Surjit, Oberoi, Kumar, Lal: "Enhanced alpha1 microglobulin secretion from Hepatitis E virus
-------------------	---

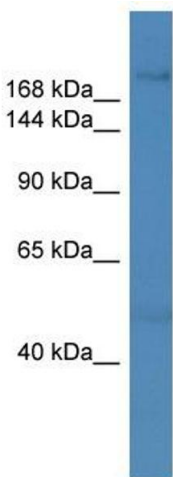
ORF3-expressing human hepatoma cells is mediated by the tumor susceptibility gene 101." in:
The Journal of biological chemistry, Vol. 281, Issue 12, pp. 8135-42, (2006) ([PubMed](#)).

Images



Immunohistochemistry

Image 1. Rabbit Anti-ZNF142 Antibody Catalog Number: ARP38554_P050 Formalin Fixed Paraffin Embedded Tissue: Human Adult Liver Observed Staining: Cytoplasm, Membrane in hepatocytes, strong signal, low tissue distribution Primary Antibody Concentration: 1:100 Secondary Antibody: Donkey anti-Rabbit-Cy3 Secondary Antibody Concentration: 1:200 Magnification: 20X Exposure Time: 0.5 – 2.0 sec Protocol located in Reviews and Data.



Western Blotting

Image 2. WB Suggested Anti-ZNF142 Antibody Titration: 0.2-1 ug/ml ELISA Titer: 1:1562500 Positive Control: MCF7 cell lysate ZNF142 is strongly supported by BioGPS gene expression data to be expressed in Human MCF7 cells