

Datasheet for ABIN2780657
anti-CEBPD antibody (Middle Region)[Go to Product page](#)

3 Images

1 Publication

Overview

Quantity:	100 µL
Target:	CEBPD
Binding Specificity:	Middle Region
Reactivity:	Human, Mouse, Rat, Cow, Guinea Pig, Rabbit, Sheep
Host:	Rabbit
Clonality:	Polyclonal
Conjugate:	This CEBPD antibody is un-conjugated
Application:	Western Blotting (WB)

Product Details

Immunogen:	The immunogen is a synthetic peptide directed towards the middle region of human CEBPD
Sequence:	RNQEMQQKLV ELSAENEKLH QRVEQLTRDL AGLRQFFKQL PSPFLPAAG
Predicted Reactivity:	Cow: 93%, Guinea Pig: 100%, Human: 100%, Mouse: 100%, Rabbit: 100%, Rat: 100%, Sheep: 93%
Characteristics:	This is a rabbit polyclonal antibody against CEBPD. It was validated on Western Blot using a cell lysate as a positive control.
Purification:	Affinity Purified

Target Details

Target:	CEBPD
Alternative Name:	CEBPD (CEBPD Products)

Target Details

Background:	<p>CEBPD is a bZIP transcription factor which can bind as a homodimer to certain DNA regulatory regions. It can also form heterodimers with the related protein CEBP-alpha. The encoded protein is important in the regulation of genes involved in immune and inf</p> <p>Alias Symbols: C/EBP-delta, CELF, CRP3, NF-IL6-beta</p> <p>Protein Interaction Partner: SUMO1, UBE2I, EP300, Dlg4, RB1, E2F1, UBC, SIAH2, POU1F1, NCOA3, SUMO2, HDAC1, HDAC4, HDAC3, IPO4, UBR5, SPAG5, TRIM26, XPO1, FANCD2, PIAS4, CREBBP, CEBPE, CEBPB, SPI1, RELA, CEBPG, CEBPA, SMAD4, SMAD3, LTF,</p> <p>Protein Size: 269</p>
Molecular Weight:	28 kDa
Gene ID:	1052
NCBI Accession:	NM_005195 , NP_005186
UniProt:	P49716

Application Details

Application Notes:	Optimal working dilutions should be determined experimentally by the investigator.
Comment:	Antigen size: 269 AA
Restrictions:	For Research Use only

Handling

Format:	Liquid
Concentration:	Lot specific
Buffer:	Liquid. Purified antibody supplied in 1x PBS buffer with 0.09 % (w/v) sodium azide and 2 % sucrose.
Preservative:	Sodium azide
Precaution of Use:	This product contains Sodium azide: a POISONOUS AND HAZARDOUS SUBSTANCE which should be handled by trained staff only.
Handling Advice:	Avoid repeated freeze-thaw cycles.
Storage:	-20 °C
Storage Comment:	For short term use, store at 2-8°C up to 1 week. For long term storage, store at -20°C in small aliquots to prevent freeze-thaw cycles.

Product cited in: Povlsen, Løfgren, Dalgas, Birkler, Johannsen, Støttrup, Bøtker: "Protection against myocardial ischemia-reperfusion injury at onset of type 2 diabetes in Zucker diabetic fatty rats is associated with altered glucose oxidation." in: **PLoS ONE**, Vol. 8, Issue 5, pp. e64093, (2013) ([PubMed](#)).

Tsai, Hong, Liou, Liao: "Association study of GOT2 genetic polymorphisms and schizophrenia." in: **Psychiatric genetics**, Vol. 17, Issue 5, pp. 314, (2007) ([PubMed](#)).

Images

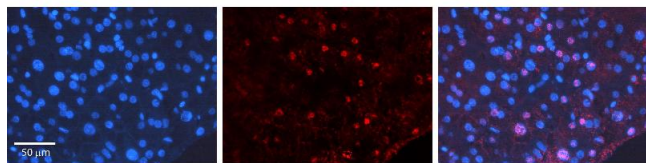


Western Blotting

Image 1. WB Suggested Anti-CEBPD Antibody Titration: 0.2-1 ug/ml ELISA Titer: 1:312500 Positive Control: COLO205 cell lysate CEBPD is supported by BioGPS gene expression data to be expressed in COLO205

Western Blotting

Image 2. WB Suggested Anti-CEBPD Antibody Titration: 0.2-1 µg/mL ELISA Titer: 1:12500 Positive Control: COLO205 cell lysate CEBPD is supported by BioGPS gene expression data to be expressed in COLO205



Immunohistochemistry

Image 3. Rabbit Anti-CEBPD Antibody Formalin Fixed Paraffin Embedded Tissue: Human Liver Tissue Observed Staining: Nucleus Primary Antibody Concentration: 1:100 Other Working Concentrations: N/A Secondary Antibody: Donkey anti-Rabbit-Cy3 Secondary Antibody Concentration: 1:200 Magnification: 20X Exposure Time: 0.5 - 2.0 sec